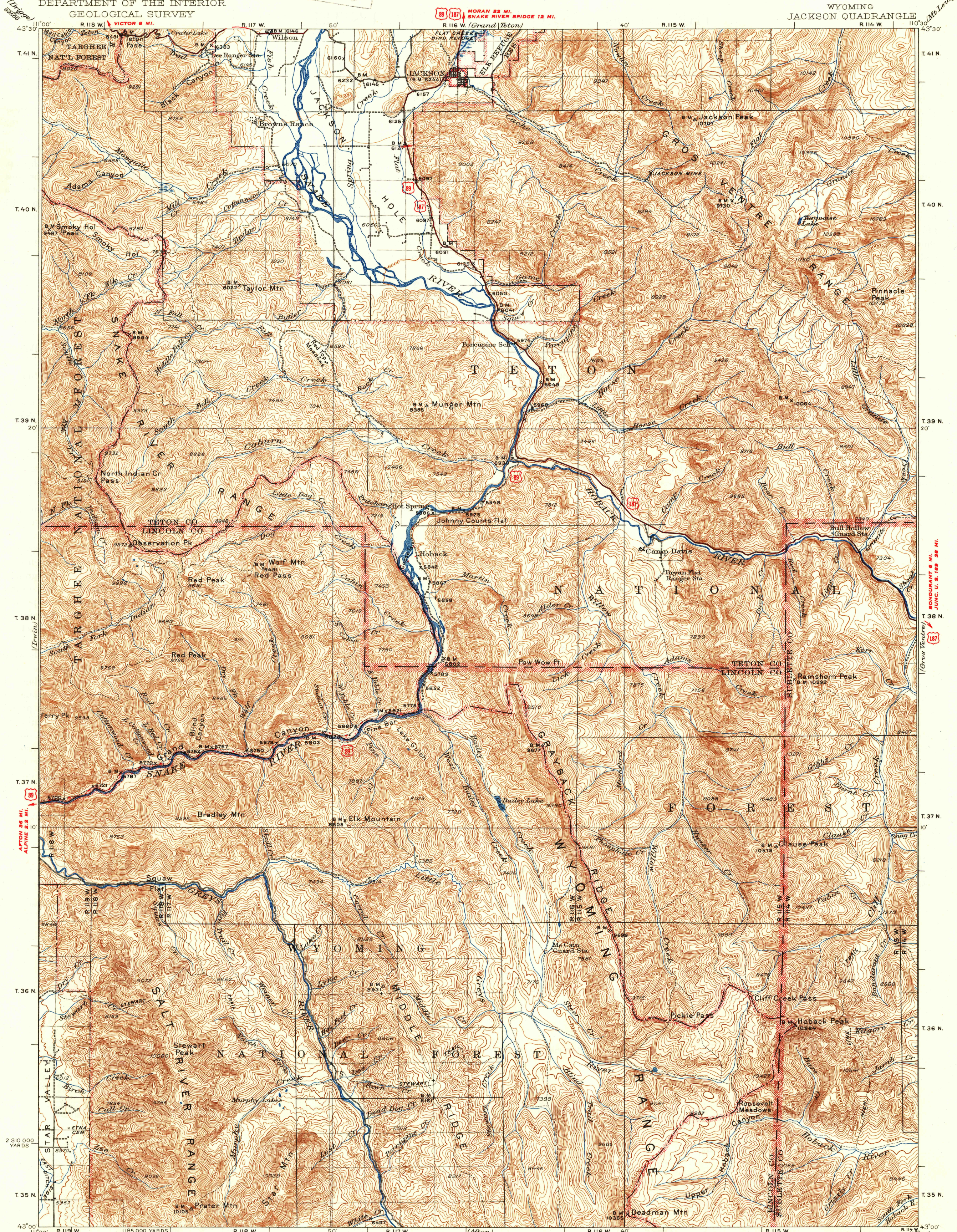


U.S.G.S. FILE COPY Inspection and Editing.

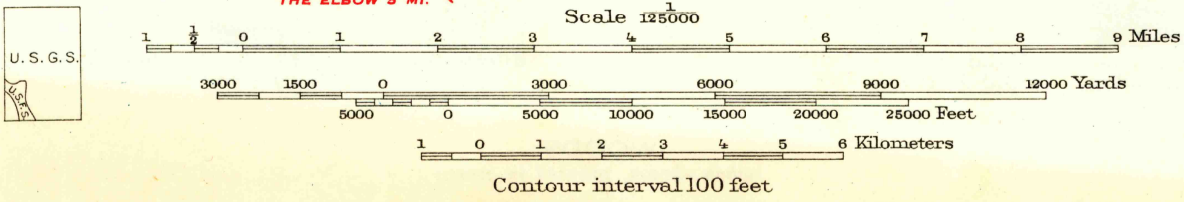
UNITED STATES DEPARTMENT OF THE INTERIOR GEOLOGICAL SURVEY

WYOMING JACKSON QUADRANGLE



Topography by T. F. Murphy, Bishop Moorhead, R. K. Lynt and U. S. Forest Service. Surveyed in 1927 and 1929-1931.

ROAD CLASSIFICATION  
Dependable hard-surface 1946 U.S. Route 151  
heavy-duty road Loose-surface graded + + + State Route 151  
Secondary hard-surface Unsurfaced, graded + + + State Route 151  
all-weather road Dirt road + + + State Route 151  
More than two lanes indicated along road with tick at point of change. 2 LANE, 3 LANE



Polyconic projection, North American datum  
5000 yard grid based upon U.S. zone system, F

U.S.G.S. FILE COPY Inspection and Editing.

JACKSON, WYO.  
Edition of 1935  
reprinted 1947  
N4500-W1103050

AUG 20 1947

RETURN TO: USGS MED HISTORICAL MAP ARCHIVES

32 20