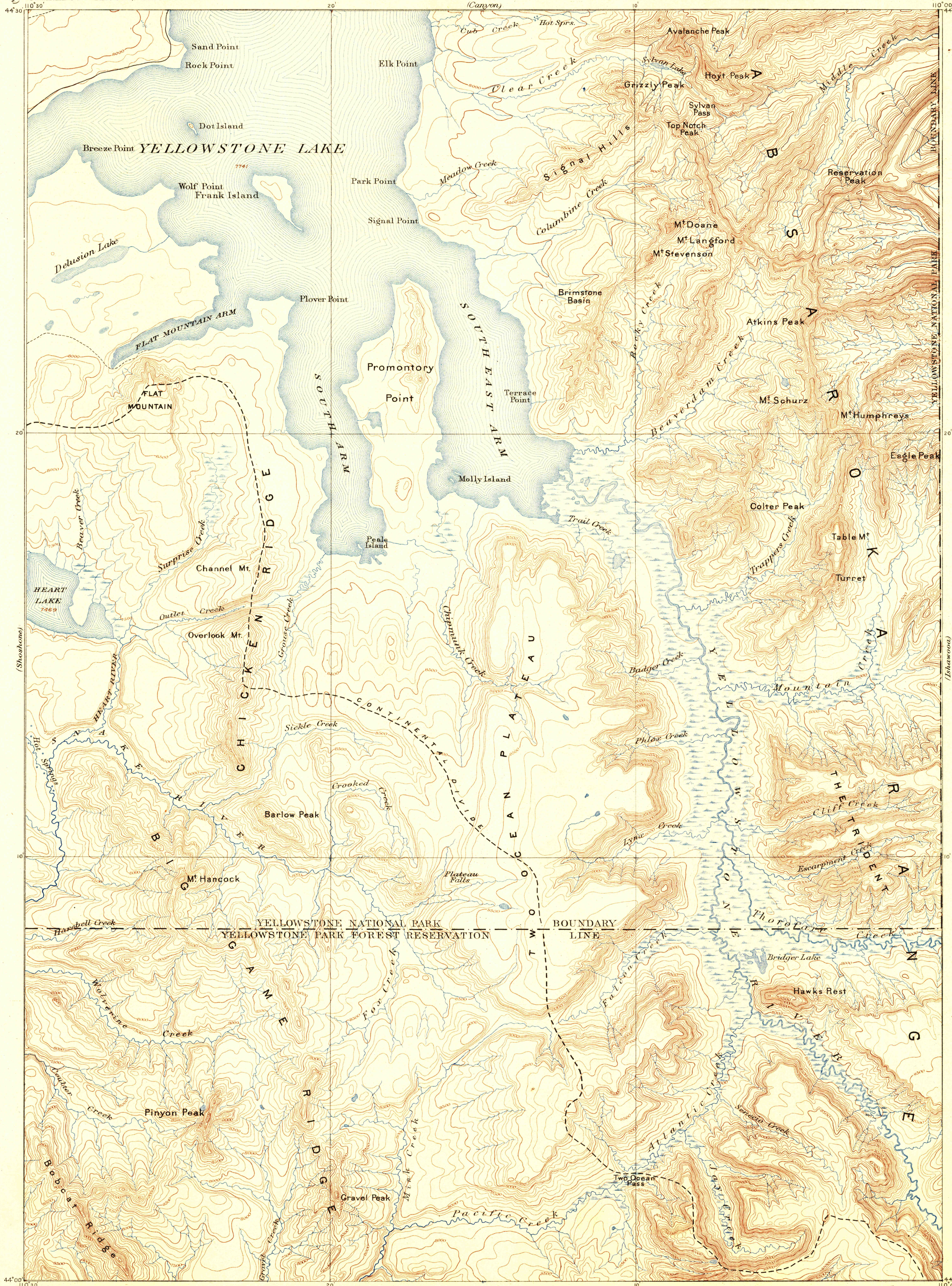


U.S. GEOLOGICAL SURVEY
CHARLES D. WALCOTT, DIRECTOR



Henry Gannett, Chief Geographer.
J. H. Renshaw, Geographer in charge.
Triangulation by H. S. Chase.
Topography by J. H. Renshaw.
Surveyed in 1885.

U. S. G. S.
FILE COPY
Ed. Div. Topographic Maps.

Scale 1:250,000
Miles
Kilometers
Contour Interval 100 feet.
Datum mean Sea level.

Edition of April 1896.

U. S. G. S.
FILE COPY
Editor of Topographic Maps.

LAKE.

RETURN TO:
USGS AND HISTORICAL MAP ARCHIVES

Oct 8-96
500