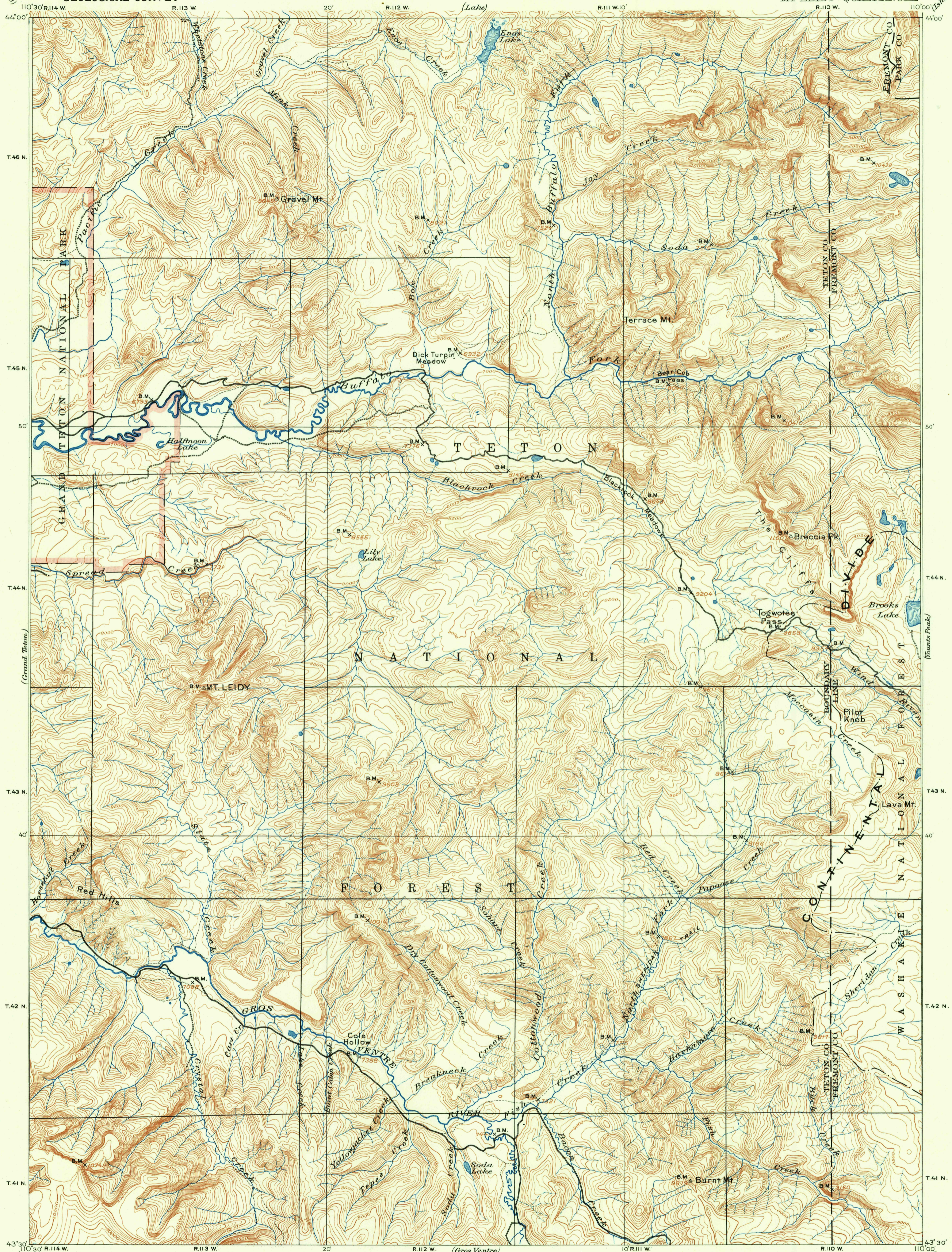


UNITED STATES  
DEPARTMENT OF THE INTERIOR  
GEOLOGICAL SURVEY

WYOMING  
MT LEIDY QUADRANGLE



E. M. Douglas, Geographer in charge.  
Triangulation by Frank Tweedy.  
Topography by G. E. Hyde.  
Surveyed in 1899.



Edition of Feb. 1902, reprinted 1951  
Polyconic projection.

FOR SALE BY U. S. GEOLOGICAL SURVEY, DENVER 25, COLORADO OR WASHINGTON 25, D. C.  
A FOLDER DESCRIBING TOPOGRAPHIC MAPS AND SYMBOLS IS AVAILABLE ON REQUEST

WYO.  
MT LEIDY  
N4330 - W10000/30

**USGS**  
**FILE COPY**  
TOPOGRAPHIC DIVISION

RETURN TO:  
USGS NHD HISTORICAL MAP ARCHIVES

MAR - 2 1961

2015