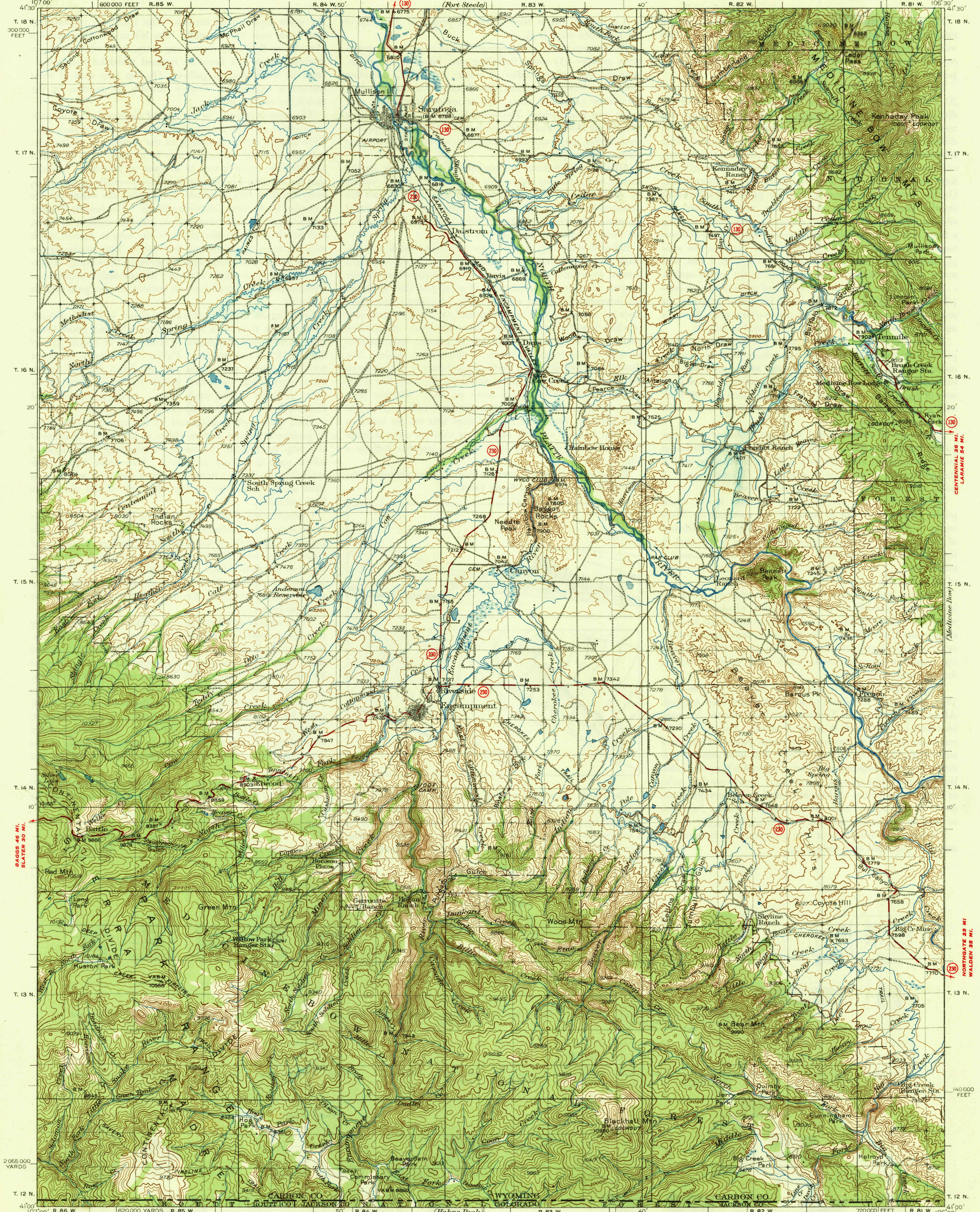


UNITED STATES  
DEPARTMENT OF THE INTERIOR  
GEOLOGICAL SURVEY

U. S. G. S.  
FILE COPY  
Inspection and Editing.

WYOMING-COLORADO  
SARATOGA QUADRANGLE



Topography by R.T. Evans, D.H. Rutledge, G.A. Green,  
K.A. Phillips, C.P. Van Camp, C.E. Bradford, and Frank Tweedy  
Surveyed in 1901 and 1934

Scale 1:250,000  
1 1/2 0 1 2 3 4 5 Miles  
1 1/2 0 1 2 3 4 5 Kilometers

Contour interval 100 feet  
Datum is mean sea level

1938  
ROADS IMPROVISED SURFACED  
ROADS OTHERWISE SURFACED

Polyconic projection. 1927 North American datum  
5000 yard grid based on U.S. zone system, E  
20,000 foot grid based on Wyoming (East Central)  
rectangular coordinate system

SARATOGA, WYO.-COLO.

1685:24; /25;

JUN 24 1940

RETURN TO:  
USGS AND HISTORICAL MAP ARCHIVES

U. S. G. S.  
FILE COPY  
Inspection and Editing.

2435