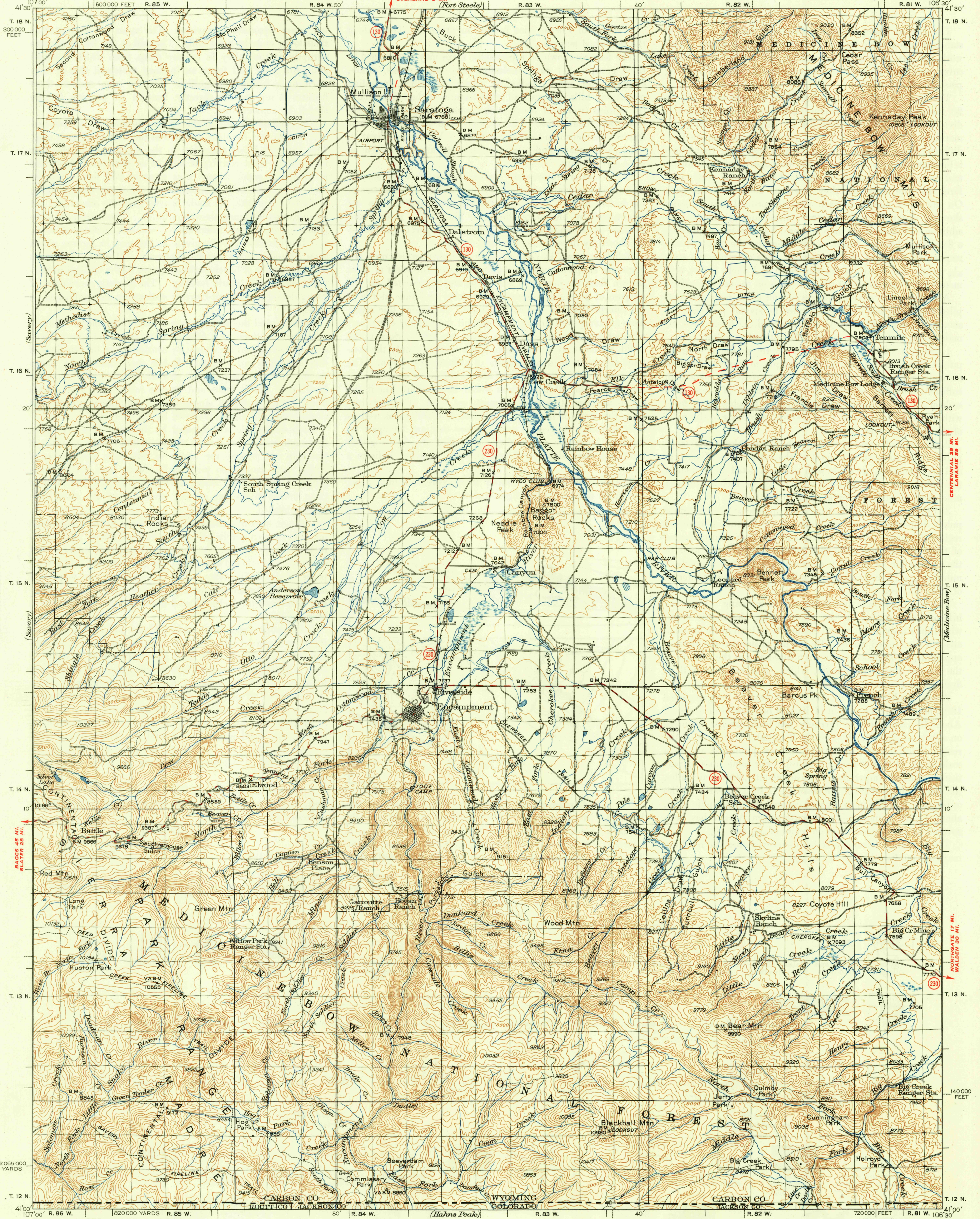


UNITED STATES
DEPARTMENT OF THE INTERIOR
GEOLOGICAL SURVEY

WYOMING-COLORADO
SARATOGA QUADRANGLE



U.S.G.S.
FILE COPY
Inspection and Editing

U.S.G.S.
FILE COPY
Inspection and Editing

RETURN TO:
USGS AND HISTORICAL MAP ARCHIVES

Topography by R.E. Evans, D.H. Rutledge, G.A. Green,
K.A. Phillips, C.P. Van Camp, C.E. Bradford, and Frank Tweedy
Surveyed in 1901 and 1934

ROAD CLASSIFICATION
HARD-SURFACE ALL WEATHER ROADS DRY WEATHER ROADS
Heavy-duty ———— **LANE LANE** Improved dirt ————
Medium-duty ———— **LANE LANE** Unimproved dirt ————
Loose-surface, graded, or narrow hard-surface ————
U.S. Route State Route

Scale 1:25000
3000 1500 0 3000 6000 9000 12000 Yards
5000 10000 15000 20000 25000 Feet
1 0 1 2 3 4 5 6 Kilometers
Contour interval 100 feet
Datum is near sea level

DIAGRAM OF TOWNSHIP

6	5	4	3	2	1
7	8	9	10	11	12
13	14	15	16	17	18
19	20	21	22	23	24
25	26	27	28	29	30

Polyconic projection, 1927 North American datum
5000 yard grid based on U.S. zone system, E
20000 foot grid based on Wyoming (East Central)
rectangular coordinate system

SARATOGA, WYO.-COLO.
Edition of 1939
reprinted 1949
N 400-W 10630/30

USGS
Historical File
Topographic Division
U.S.G.S.
FILE COPY
Inspection and Editing

APR 22 1949

3175