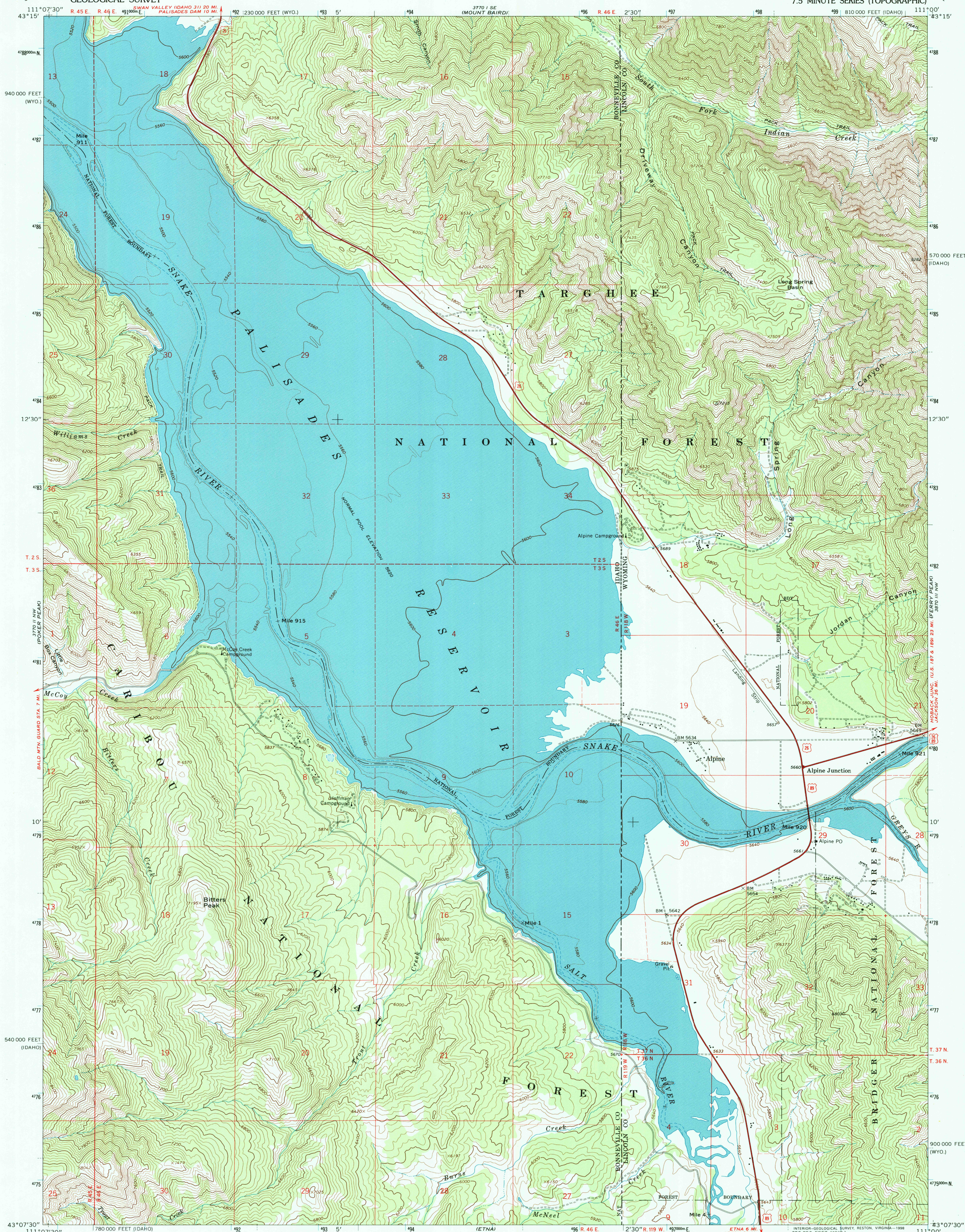
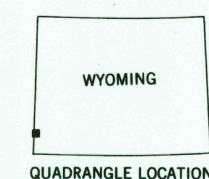
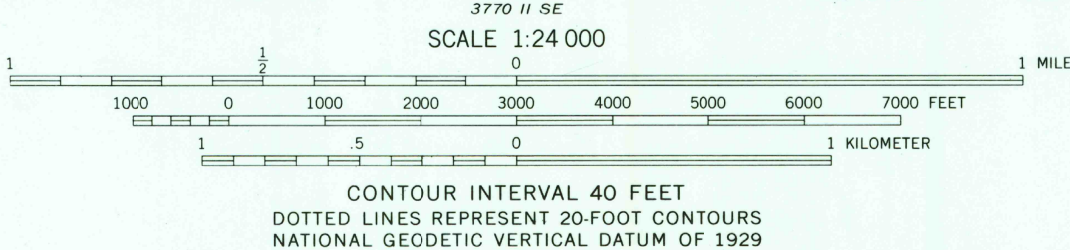
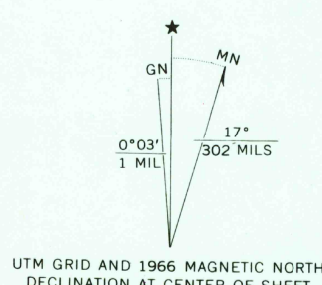


UNITED STATES
DEPARTMENT OF THE INTERIOR
GEOLOGICAL SURVEY

ALPINE QUADRANGLE
WY-ID
7.5 MINUTE SERIES (TOPOGRAPHIC)



Produced by the United States Geological Survey
Control by USGS and NOS/NOAA
Compiled from aerial photographs taken 1965. Field checked 1966
Underwater contours by U.S. Bureau of Reclamation
North American Datum of 1927 (NAD 27). Projection:
Idaho Coordinate System, east zone (Lambert Conformal Conic)
10000-foot ticks: Wyoming Coordinate System, west zone
Blue 1000-meter Universal Transverse Mercator ticks, zone 12
North American Datum of 1983 (NAD 83) is shown by dashed
corner ticks. The values of the shift between NAD 27 and NAD 83
for 7.5-minute intersections are obtainable from National Geodetic
Survey NADCON software.
There may be private inholdings within the boundaries of the
National or State reservations shown on this map.
Fine red dashed lines indicate selected fence lines.
Where omitted, land lines have not been established.



ROAD CLASSIFICATION
Heavy-duty ——— Light-duty ———
Unimproved dirt ———
U.S. Route

THIS MAP COMPLIES WITH NATIONAL MAP ACCURACY STANDARDS
FOR SALE BY U.S. GEOLOGICAL SURVEY, P.O. BOX 25286, DENVER, COLORADO 80225
A FOLDER DESCRIBING TOPOGRAPHIC MAPS AND SYMBOLS IS AVAILABLE ON REQUEST

ALPINE, WY-ID G2

1966

DMA 3770 II SE-SERIES V893

