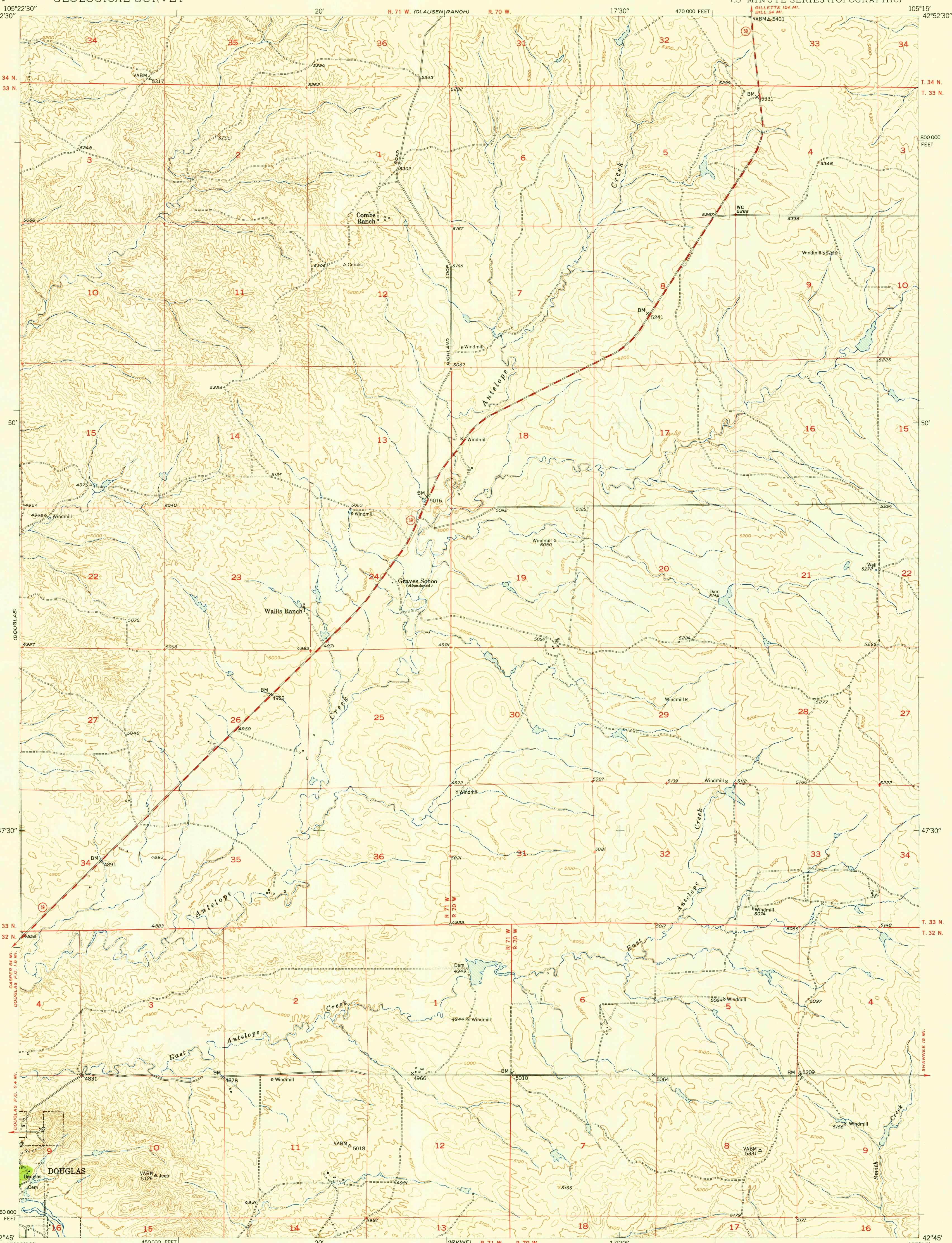
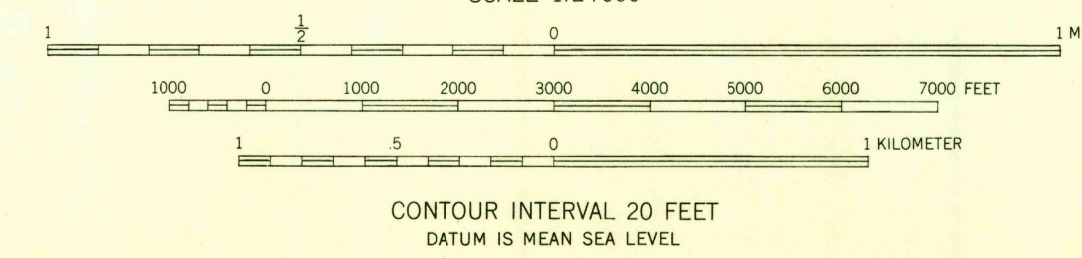
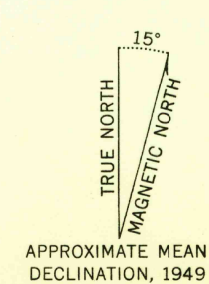


U. S. G. S.
FILE COPY
Inspection and Editing.



CHALK BUTTES
Mapped, edited, and published by the Geological Survey as part of the Department of the Interior program for the development of the Missouri River Basin Control by USGS and USC&GS
Topography from aerial photographs by multiplex methods and by plane-table surveys 1949
Aerial photographs taken September 1948. Field check 1949
Polyconic projection. 1927 North American datum
10,000-foot grid based on Wyoming coordinate system, east zone



U. S. G. S.
FILE COPY
Inspection and Editing.

ROAD CLASSIFICATION
HARD-SURFACE ALL WEATHER ROADS DRY WEATHER ROADS
Heavy-duty LANE-16 LANE Improved dirt
Medium-duty LANE-16 LANE Unimproved dirt
Loose-surface, graded, or narrow hard-surface
U. S. Route State Route

ANTELOPE CREEK, WYO.
N4245-W10515/7.5
EDITION OF 1950

THIS MAP COMPLIES WITH NATIONAL MAP ACCURACY STANDARDS
FOR SALE BY U. S. GEOLOGICAL SURVEY, FEDERAL CENTER, DENVER, COLORADO OR WASHINGTON 25, D. C.
A FOLDER DESCRIBING TOPOGRAPHIC MAPS AND SYMBOLS IS AVAILABLE ON REQUEST

RETURN TO:
USGS AND HISTORICAL MAP ARCHIVES