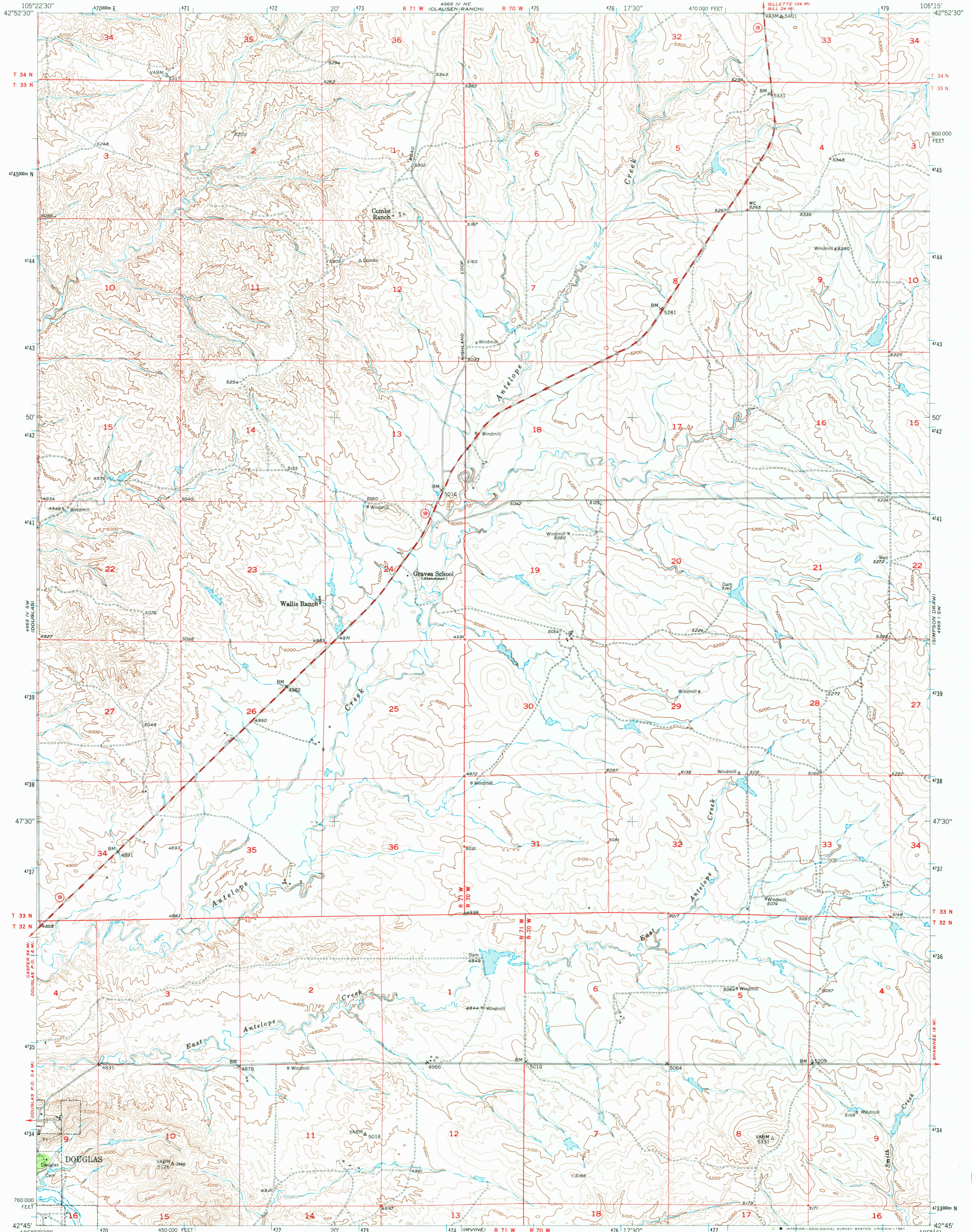


UNITED STATES
DEPARTMENT OF THE INTERIOR
GEOLOGICAL SURVEY

ANTELOPE CREEK QUADRANGLE
WYOMING-CONVERSE CO.
7.5 MINUTE SERIES (TOPOGRAPHIC)



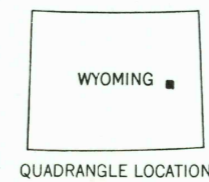
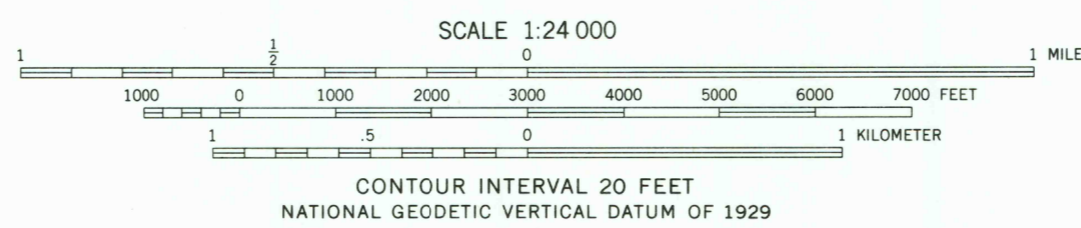
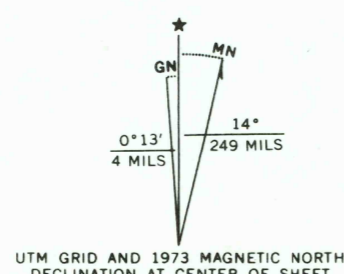
Mapped, edited, and published by the Geological Survey as part of the Department of the Interior program for the development of the Missouri River Basin Control by USGS and USC&GS

Topography from aerial photographs by multiplex methods and by plane-table surveys 1949
Aerial photographs taken September 1948. Field check 1949

Polyconic projection. 1927 North American datum
10,000-foot grid based on Wyoming coordinate system, east zone
1000-meter Universal Transverse Mercator grid ticks, zone 13, shown in blue

To place on the predicted North American Datum 1983 move the projection lines 7 meters north and 47 meters east as shown by dashed corner ticks

Map photosinspected 1973
No major culture or drainage changes observed



ROAD CLASSIFICATION
 HARD SURFACE ALL WEATHER ROADS DRY WEATHER ROADS
 Heavy-duty ——— 4 LANE 16 LANE Improved dirt
 Medium-duty ——— 4 LANE 16 LANE Unimproved dirt
 U. S. Route State Route

ANTELOPE CREEK, WYO.
N4245-W10515/7.5

1949
MINOR REVISIONS 1973
DMA 4969 IV SE—SERIES V874
PHOTOINSPECTED 1973

THIS MAP COMPLIES WITH NATIONAL MAP ACCURACY STANDARDS
 FOR SALE BY U. S. GEOLOGICAL SURVEY, DENVER, COLORADO 80225, OR RESTON, VIRGINIA 22092
 A FOLDER DESCRIBING TOPOGRAPHIC MAPS AND SYMBOLS IS AVAILABLE ON REQUEST

DEC 17 1981

RETURN TO:
USGS AND HISTORICAL MAP ARCHIVES

1500