

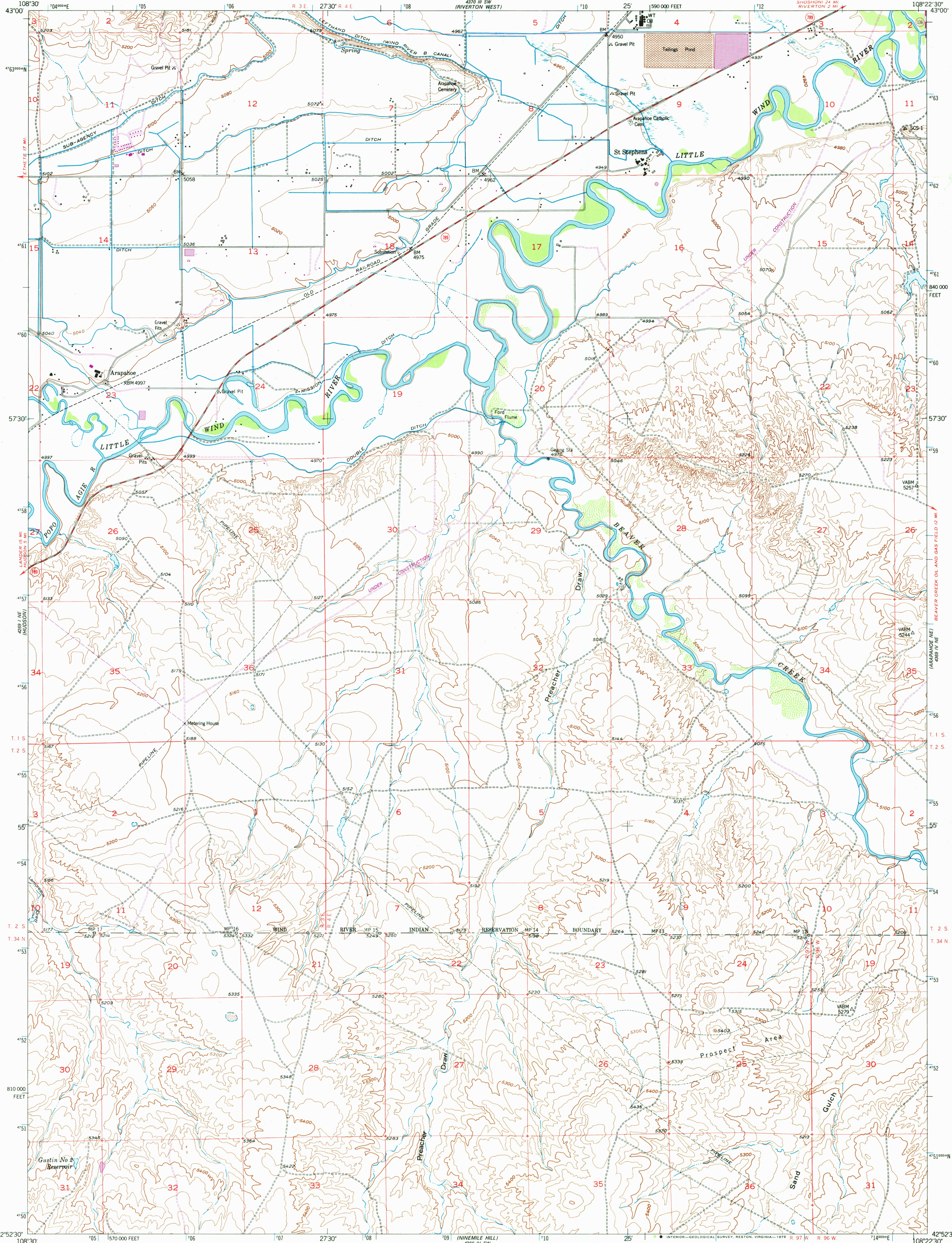
LANDER SE
42°52'30" N
108°30' W

UNITED STATES
DEPARTMENT OF THE INTERIOR
GEOLOGICAL SURVEY



ARAPAHOE QUADRANGLE
WYOMING-FREMONT CO.
7.5 MINUTE SERIES (TOPOGRAPHIC)

LANDER SE
42°52'30" N
108°30' W



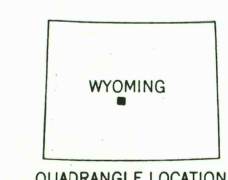
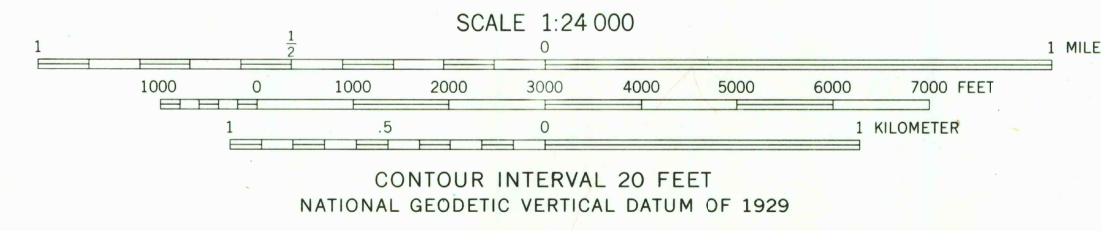
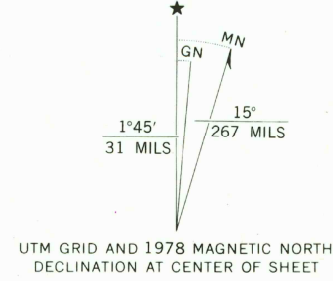
LANDER SE
42°52'30" N
108°30' W

Mapped, edited, and published by the Geological Survey
as part of the Department of the Interior program
for the development of the Missouri River Basin

Control by USGS and NOS/NOAA
Topography from aerial photographs by photogrammetric methods
Aerial photographs taken 1949. Field check 1953. Revised 1959

Polyconic projection. 1927 North American datum
10,000-foot grid based on Wyoming coordinate system,
west central zone
1000-meter Universal Transverse Mercator grid ticks,
zone 12, shown in blue

Revisions shown in purple compiled from aerial photographs taken
1975. Map edited 1978. This information not field checked



ROAD CLASSIFICATION
Medium-duty ——— Light-duty ———
Unimproved dirt ———
State Route ———

USGS
Historical File
Topographic Division

ARAPAHOE, WYO.
N4252.5—W10822.5/7.5
1959
PHOTOREVISED 1978
DMA 4369 IV NW—SERIES V374

THIS MAP COMPLIES WITH NATIONAL MAP ACCURACY STANDARDS
FOR SALE BY U.S. GEOLOGICAL SURVEY, DENVER, COLORADO 80225, OR RESTON, VIRGINIA 22092
A FOLDER DESCRIBING TOPOGRAPHIC MAPS AND SYMBOLS IS AVAILABLE ON REQUEST

RETURN TO:
USGS MAP HISTORICAL MAP ARCHIVE

SEP 19 1979

1000