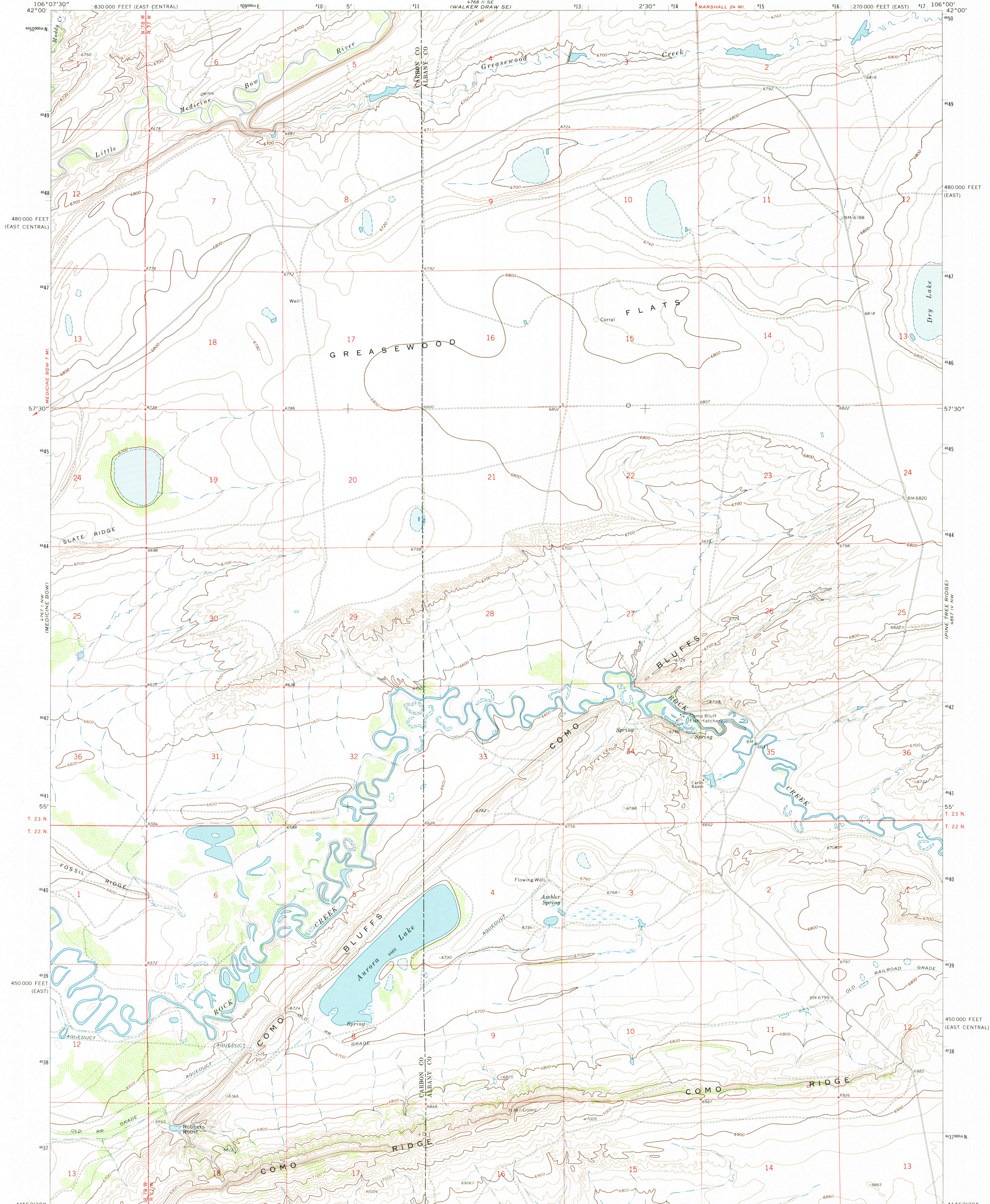
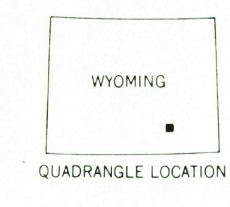
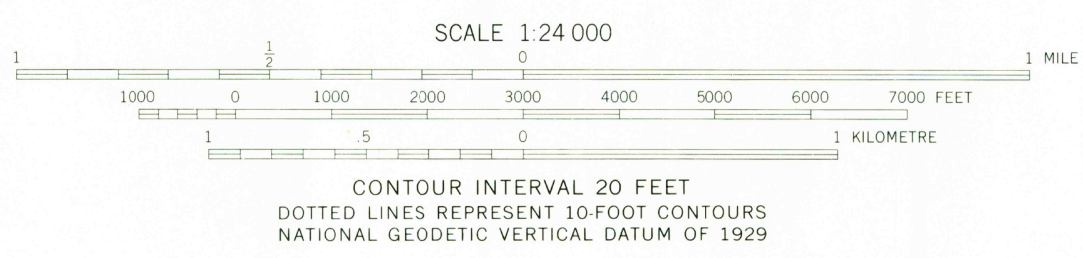
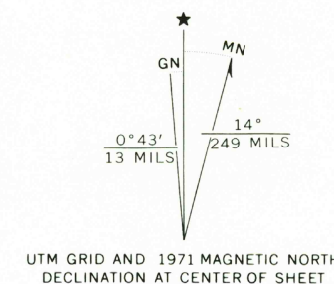


UNITED STATES
DEPARTMENT OF THE INTERIOR
GEOLOGICAL SURVEY

AURORA LAKE QUADRANGLE
WYOMING
7.5 MINUTE SERIES (TOPOGRAPHIC)
NE 4 COMO RIDGE 15' QUADRANGLE



Mapped, edited, and published by the Geological Survey
Control by USGS and USC&GS
Topography by photogrammetric methods from aerial photographs taken 1970. Field checked 1971
Projection: Wyoming coordinate system, east zone (transverse Mercator)
10,000-foot grid ticks based on Wyoming coordinate system, east and east central zones
1000-metre Universal Transverse Mercator grid ticks, zone 13, shown in blue. 1927 North American datum
Fine red dashed lines indicate selected fence lines



ROAD CLASSIFICATION
Primary highway, hard surface
Secondary highway, hard surface
Unimproved road
Interstate Route
U. S. Route
State Route

THIS MAP COMPLIES WITH NATIONAL MAP ACCURACY STANDARDS
FOR SALE BY U.S. GEOLOGICAL SURVEY, DENVER, COLORADO 80225, OR RESTON, VIRGINIA 22092
A FOLDER DESCRIBING TOPOGRAPHIC MAPS AND SYMBOLS IS AVAILABLE ON REQUEST

USGS
Historical File
Topographic Division

AURORA LAKE, WYO.
NE 4 COMO RIDGE 15' QUADRANGLE
N4152.5-W10600/7.5

1971

AMS 4767 1 NE—SERIES V874

RETURN TO:
USGS MED HISTORICAL MAP ARCHIVES

MAR 12 1971

7950