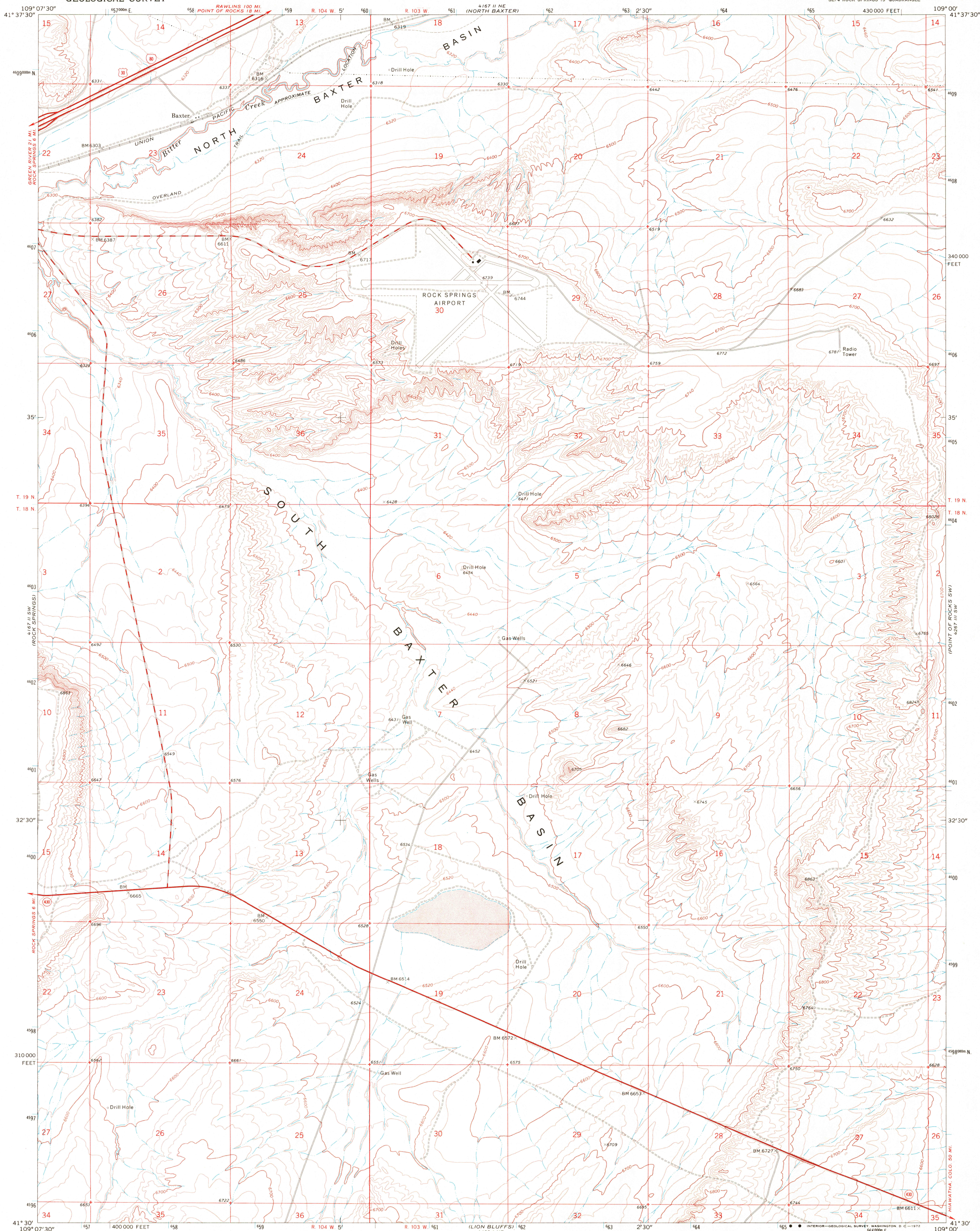
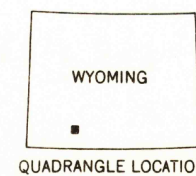
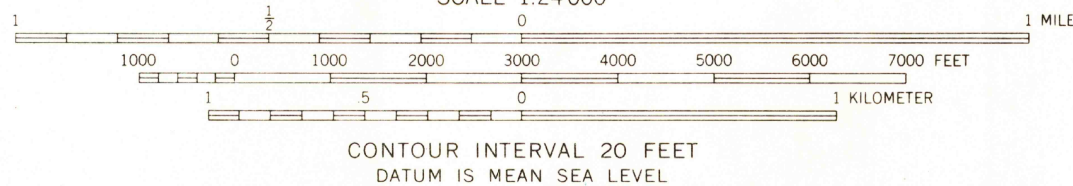
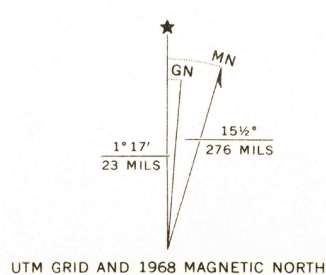


UNITED STATES  
DEPARTMENT OF THE INTERIOR  
GEOLOGICAL SURVEY

BAXTER QUADRANGLE  
WYOMING-SWEETWATER CO.  
7.5 MINUTE SERIES (TOPOGRAPHIC)  
SE 1/4 ROCK SPRINGS 15' QUADRANGLE



Mapped, edited, and published by the Geological Survey  
Control by USGS and USC&GS  
Topography by photogrammetric methods from aerial  
photographs taken 1967. Field checked 1968  
Polyconic projection. 1927 North American datum  
10,000-foot grid based on Wyoming coordinate system,  
west central zone  
1000 meter Universal Transverse Mercator grid ticks,  
zone 12, shown in blue



ROAD CLASSIFICATION  
Primary highway, all weather, hard surface  
Secondary highway, all weather, hard surface  
Light-duty road, all weather, improved surface  
Unimproved road, fair or dry hard surface  
Interstate Route U. S. Route State Route

BAXTER, WYO.  
SE 1/4 ROCK SPRINGS 15' QUADRANGLE  
N4130-W10900/7.5

1968

AMS 4167 II SE-SERIES V874

USGS  
HISTORICAL FILE  
TOPOGRAPHIC DIVISION