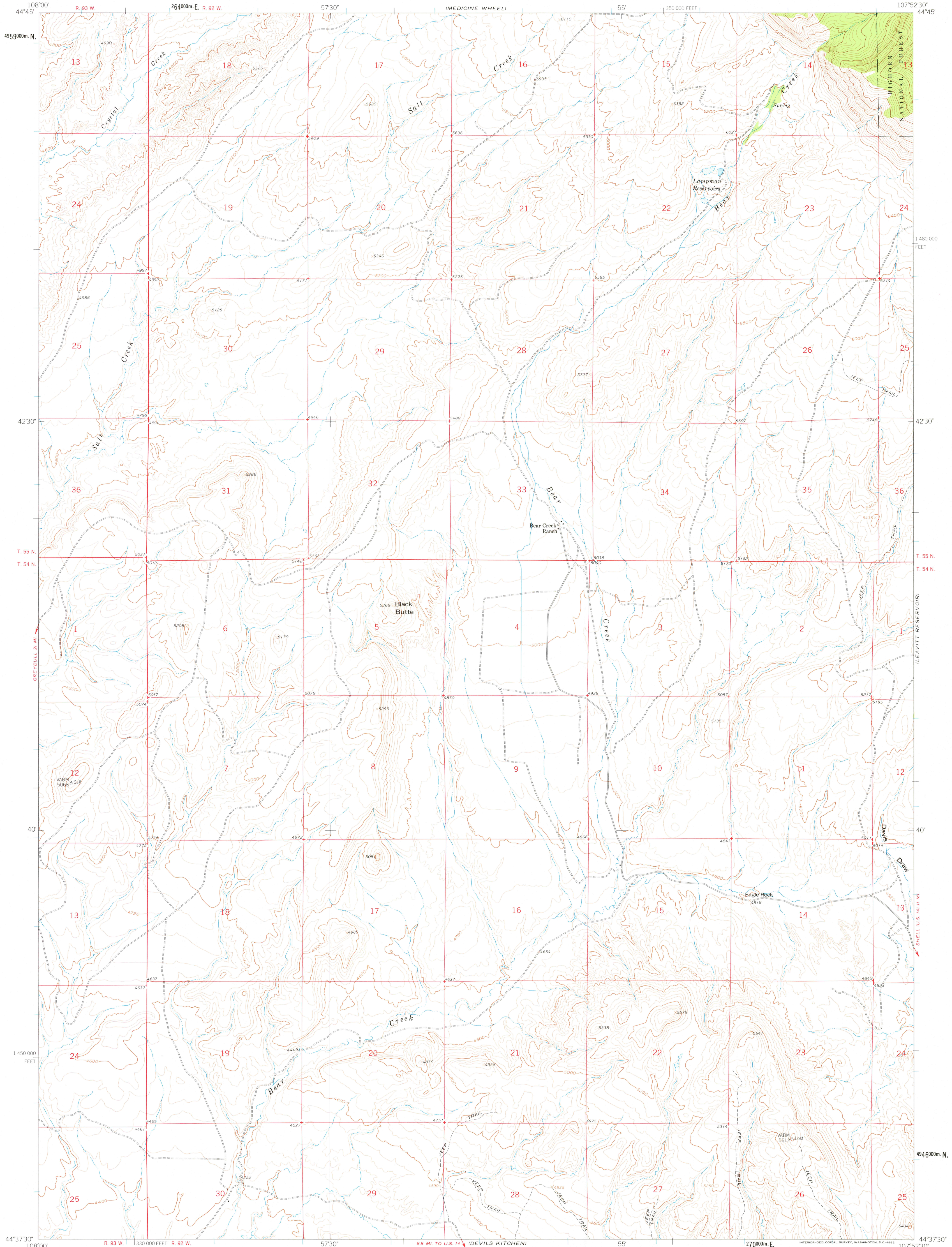
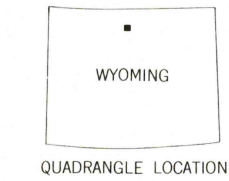
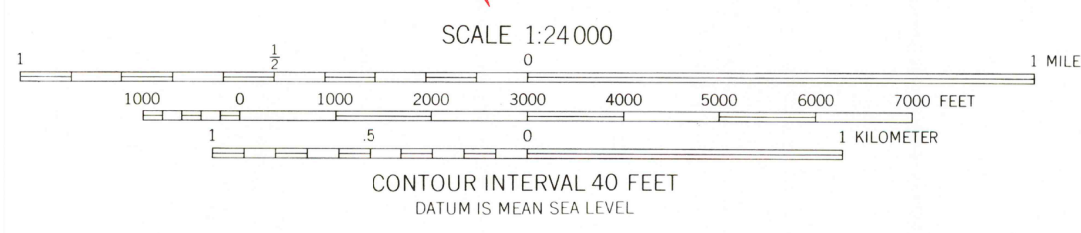
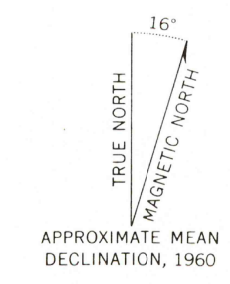


BALD MOUNTAIN



Mapped, edited, and published by the Geological Survey as part of the Department of the Interior program for the development of the Missouri River Basin Control by USGS and USC&GS
Topography by photogrammetric methods from aerial photographs taken 1958. Field checked 1960
Polyconic projection. 1927 North American datum 10,000-foot grid based on Wyoming coordinate system, east central zone
1:000 meter Universal Transverse Mercator grid ticks, zone 13, shown in blue



ROAD CLASSIFICATION
Light-duty ——— Unimproved dirt - - - - -

THIS MAP COMPLIES WITH NATIONAL MAP ACCURACY STANDARDS
FOR SALE BY U.S. GEOLOGICAL SURVEY, DENVER 25, COLORADO OR WASHINGTON 25, D.C.
A FOLDER DESCRIBING TOPOGRAPHIC MAPS AND SYMBOLS IS AVAILABLE ON REQUEST

USGS
Historical File
Topographic Division

BEAR CREEK RANCH, WYO.
N4437.5-W10752.5/7.5

1960

JUN 21 1977 190