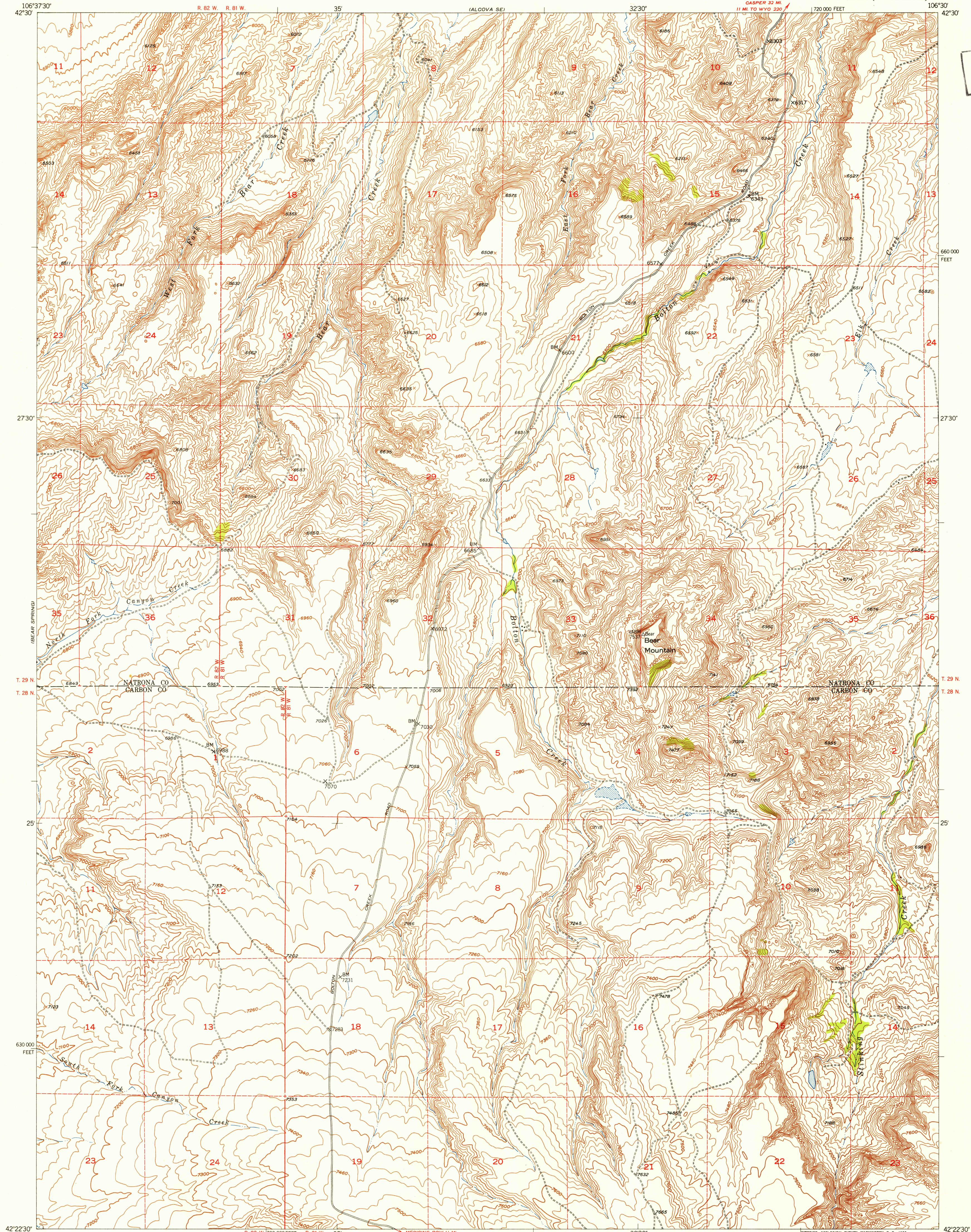
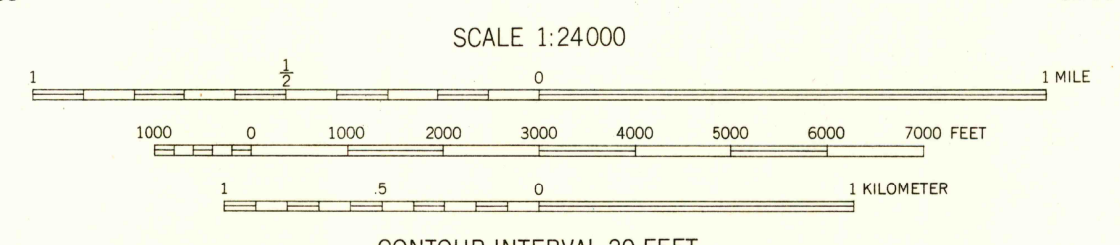
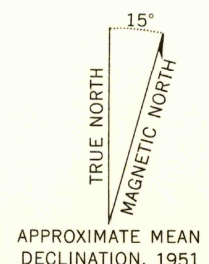


U.S.G.S.  
**FILE COPY**  
Inspection and Editings



RETURN TO:  
USGS AND HISTORICAL MAP ARCHIVES

Mapped, edited, and published by the Geological Survey as part of the Department of the Interior program for the development of the Missouri River Basin Control by USGS and USC&GS  
Topography from aerial photographs by multiplex methods by Ryell Engineering Co. Aerial photographs taken 1948  
Field check 1951  
Polyconic projection. 1927 North American datum  
10,000-foot grid based on Wyoming coordinate system, east central zone  
Dashed land lines indicate approximate locations



ROAD CLASSIFICATION

Heavy-duty	4 LANE 6 LANE	Light-duty	2 LANE 4 LANE
Medium-duty	4 LANE 6 LANE	Unimproved dirt	-----
U. S. Route	○	State Route	○

U.S.G.S.  
**FILE COPY**  
Inspection and Editings

THIS MAP COMPLIES WITH NATIONAL MAP ACCURACY STANDARDS  
FOR SALE BY U. S. GEOLOGICAL SURVEY, FEDERAL CENTER, DENVER, COLORADO OR WASHINGTON 25, D. C.  
A FOLDER DESCRIBING TOPOGRAPHIC MAPS AND SYMBOLS IS AVAILABLE ON REQUEST

BEAR MOUNTAIN, WYO.  
N4222.5—W10630/7.5  
1951