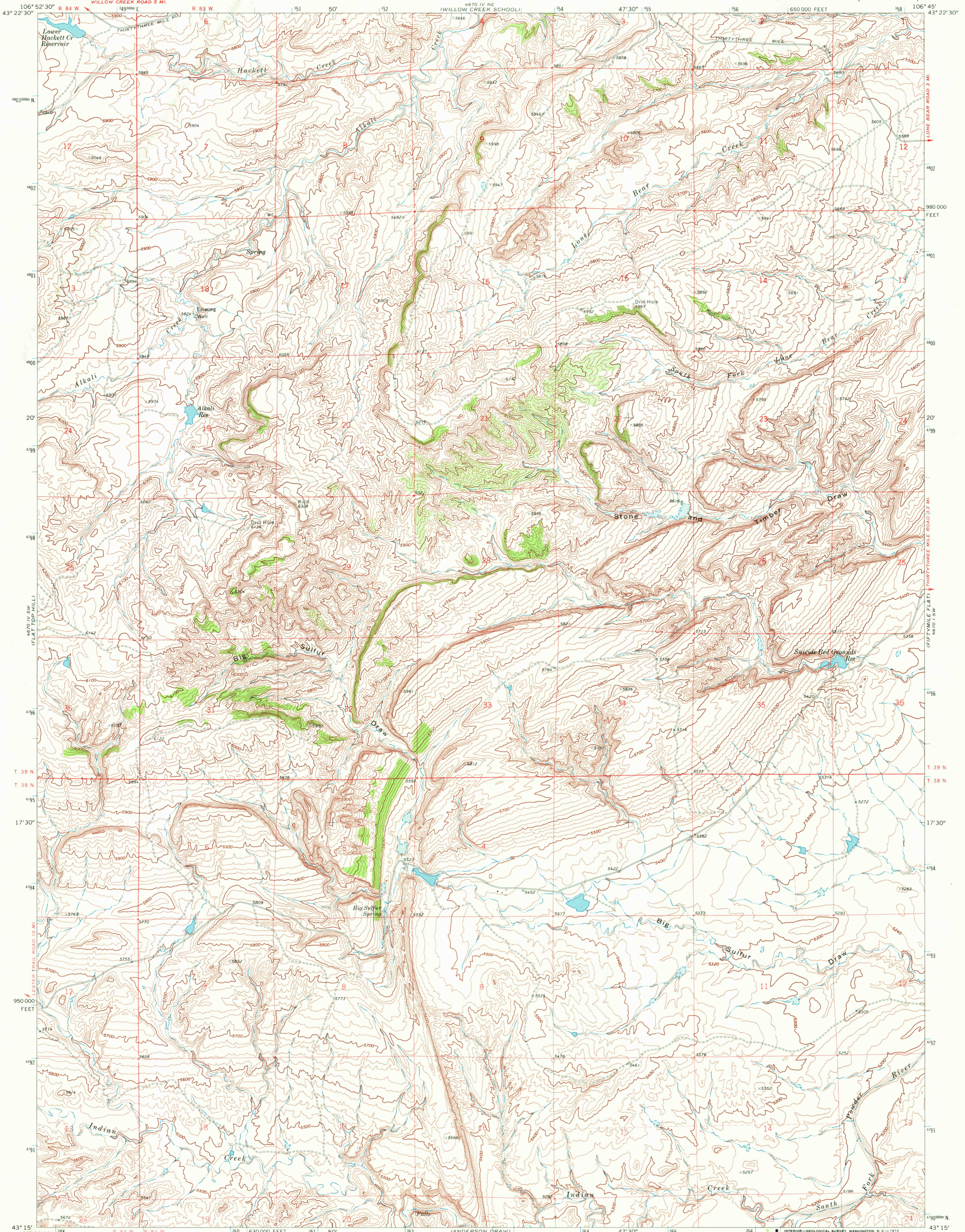
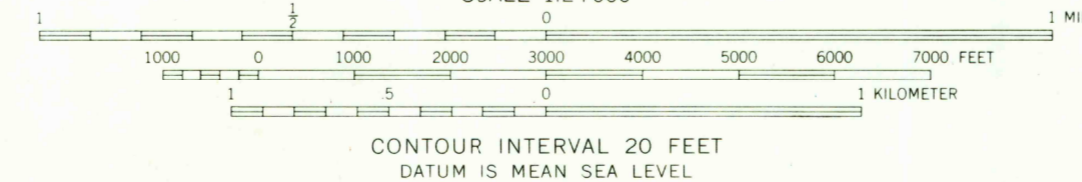
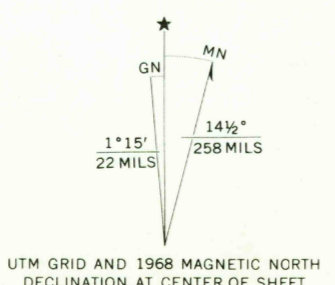


UNITED STATES  
DEPARTMENT OF THE INTERIOR  
GEOLOGICAL SURVEY

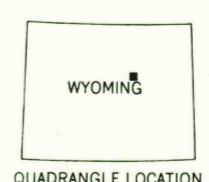
BIG SULFUR DRAW QUADRANGLE  
WYOMING-NATRONA CO.  
7.5 MINUTE SERIES (TOPOGRAPHIC)



Mapped, edited, and published by the Geological Survey  
Control by USGS and USC&GS  
Topography by photogrammetric methods from aerial photographs taken 1967. Field checked 1968  
Polyconic projection. 1927 North American datum  
10,000-foot grid based on Wyoming coordinate system, east central zone  
1000-meter Universal Transverse Mercator grid ticks, zone 13, shown in blue  
Fine red dashed lines indicate selected fence lines



CONTOUR INTERVAL 20 FEET  
DATUM IS MEAN SEA LEVEL



ROAD CLASSIFICATION  
Light-duty road, all weather, Unimproved road, fair or dry weather  
improved surface weather

THIS MAP COMPLIES WITH NATIONAL MAP ACCURACY STANDARDS  
FOR SALE BY U. S. GEOLOGICAL SURVEY, DENVER, COLORADO 80225, OR WASHINGTON, D. C. 20242  
A FOLDER DESCRIBING TOPOGRAPHIC MAPS AND SYMBOLS IS AVAILABLE ON REQUEST

BIG SULFUR DRAW, WYO.  
N4315-W10645/7.5

JUN 01 1972

1968  
AMS 4670 IV SE--SERIES V874

USGS  
HISTORICAL FILE  
TOPOGRAPHIC DIVISION

RETURN TO:  
USGS AND HISTORICAL MAP ARCHIVES

2430