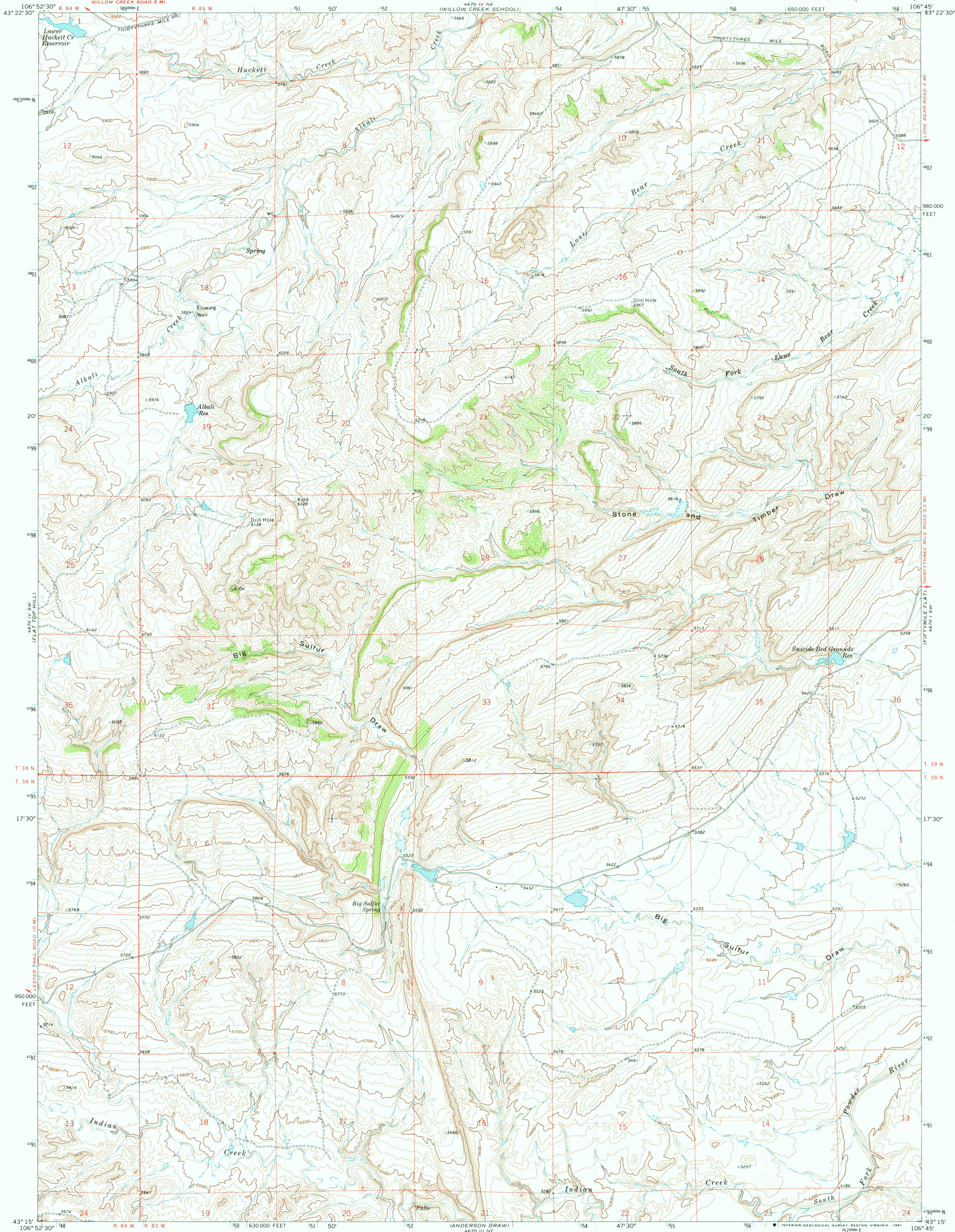


UNITED STATES
DEPARTMENT OF THE INTERIOR
GEOLOGICAL SURVEY

BIG SULFUR DRAW QUADRANGLE
WYOMING-NATRONA CO.
7.5 MINUTE SERIES (TOPOGRAPHIC)



Mapped, edited, and published by the Geological Survey

Control by USGS and NOS/NOAA

Topography by photogrammetric methods from aerial photographs taken 1967. Field checked 1968

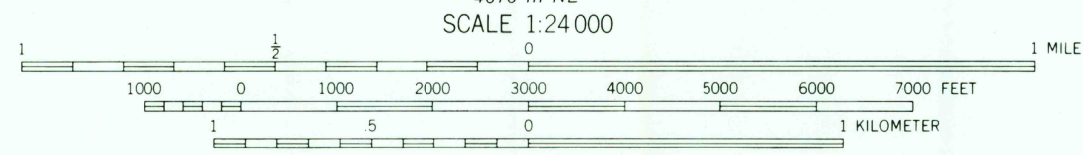
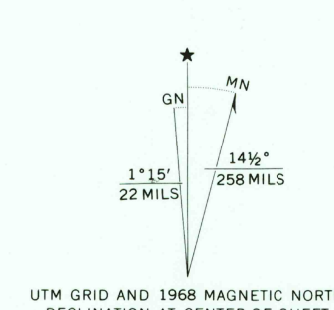
Polyconic projection. 1927 North American Datum

10,000-foot grid based on Wyoming coordinate system, east central zone

1,000-meter Universal Transverse Mercator grid ticks, zone 13, shown in blue

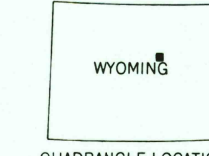
Fine red dashed lines indicate selected fence lines

The difference between 1927 North American Datum and North American Datum of 1983 (NAD 83) for 7.5 minute intersections is given in USGS Bulletin 1875. The NAD 83 is shown by dashed corner ticks



CONTOUR INTERVAL 20 FEET
NATIONAL GEODETIC VERTICAL DATUM OF 1929

THIS MAP COMPLIES WITH NATIONAL MAP ACCURACY STANDARDS
FOR SALE BY U.S. GEOLOGICAL SURVEY
DENVER, COLORADO 80225, OR RESTON, VIRGINIA 22092
A FOLDER DESCRIBING TOPOGRAPHIC MAPS AND SYMBOLS IS AVAILABLE ON REQUEST



QUADRANGLE LOCATION

Map photospicteed 1976
No major culture or drainage changes observed

ROAD CLASSIFICATION
Light duty road, all weather, Unimproved road, fair or dry weather
improved surface

BIG SULFUR DRAW, WYO.
43106-C7-TF-024

1968
PHOTOINSPECTED 1976
DMA 4670 IV SE-SERIES V874

