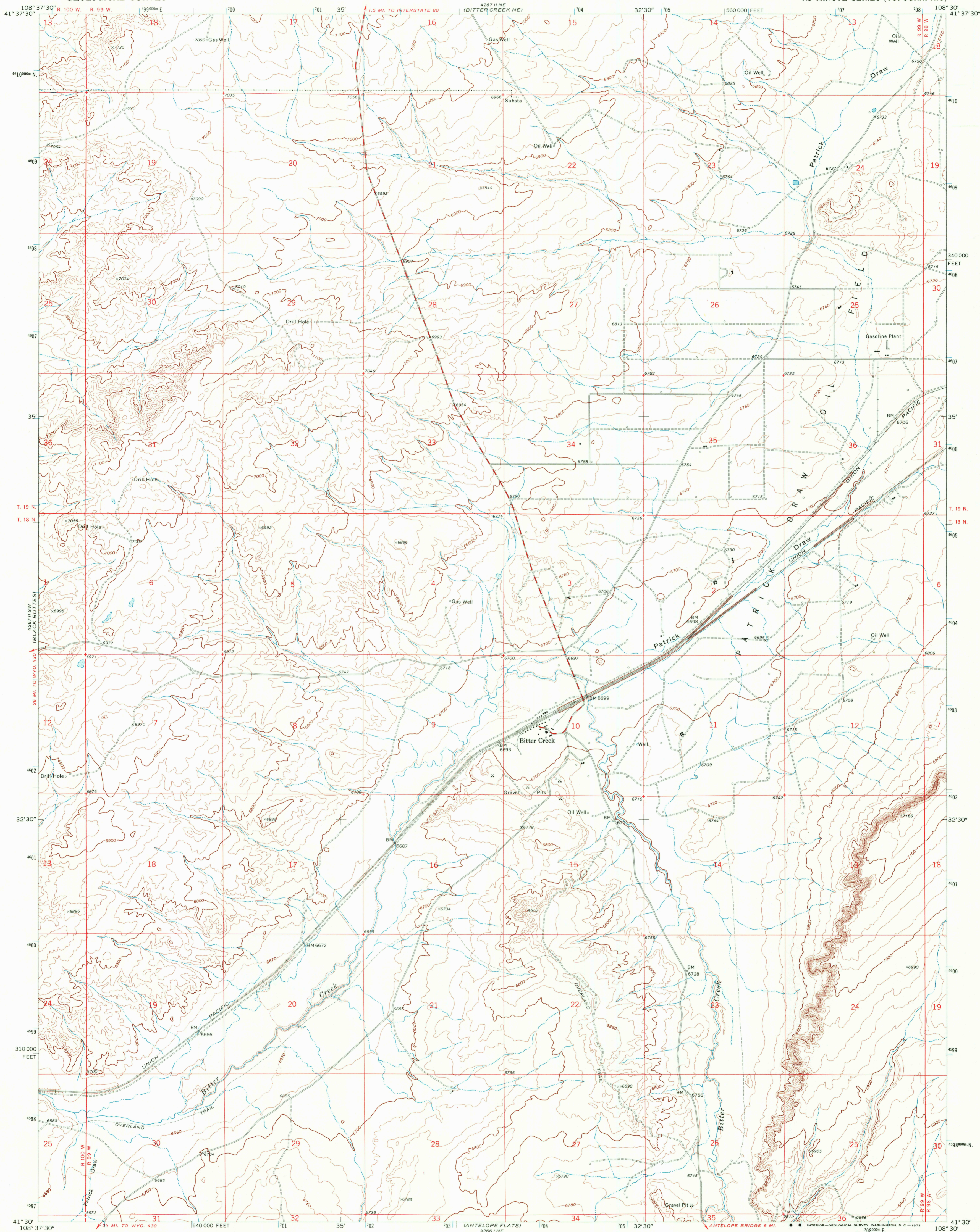
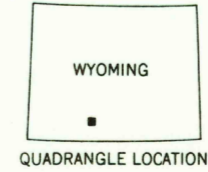
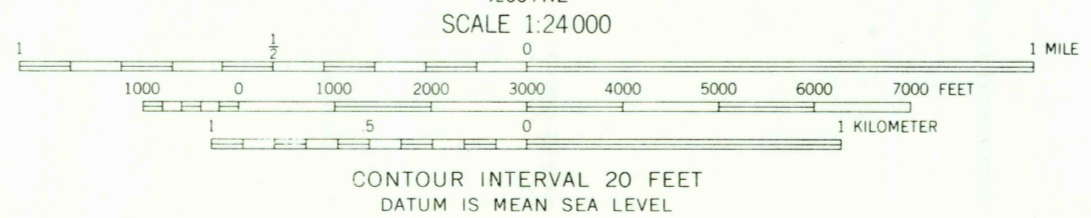
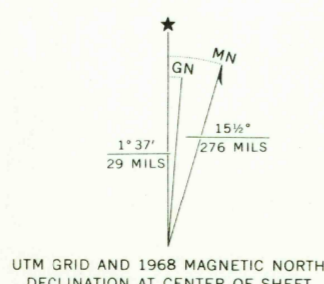


UNITED STATES  
DEPARTMENT OF THE INTERIOR  
GEOLOGICAL SURVEY

BITTER CREEK QUADRANGLE  
WYOMING—SWEETWATER CO.  
7.5 MINUTE SERIES (TOPOGRAPHIC)



Mapped, edited, and published by the Geological Survey  
Control by USGS and USC&GS  
Topography by photogrammetric methods from aerial  
photographs taken 1967. Field checked 1968  
Polyconic projection. 1927 North American datum  
10,000-foot grid based on Wyoming coordinate system,  
west central zone  
1000-meter Universal Transverse Mercator grid ticks,  
zone 12, shown in blue



**ROAD CLASSIFICATION**  
Secondary highway, all weather, Light-duty road, all weather,  
hard surface  
Unimproved road, fair or dry  
weather

BITTER CREEK, WYO.  
N4130-W10830/7.5

THIS MAP COMPLIES WITH NATIONAL MAP ACCURACY STANDARDS  
FOR SALE BY U. S. GEOLOGICAL SURVEY, DENVER, COLORADO 80225, OR WASHINGTON, D. C. 20424  
A FOLDER DESCRIBING TOPOGRAPHIC MAPS AND SYMBOLS IS AVAILABLE ON REQUEST

1968  
AMS 4267 II SE—SERIES V874

RETURN TO:  
USGS AND HISTORICAL MAP ARCHIVES

JAN 21 1972  
2295

USGS  
HISTORICAL FILE  
TOPOGRAPHIC DIVISION