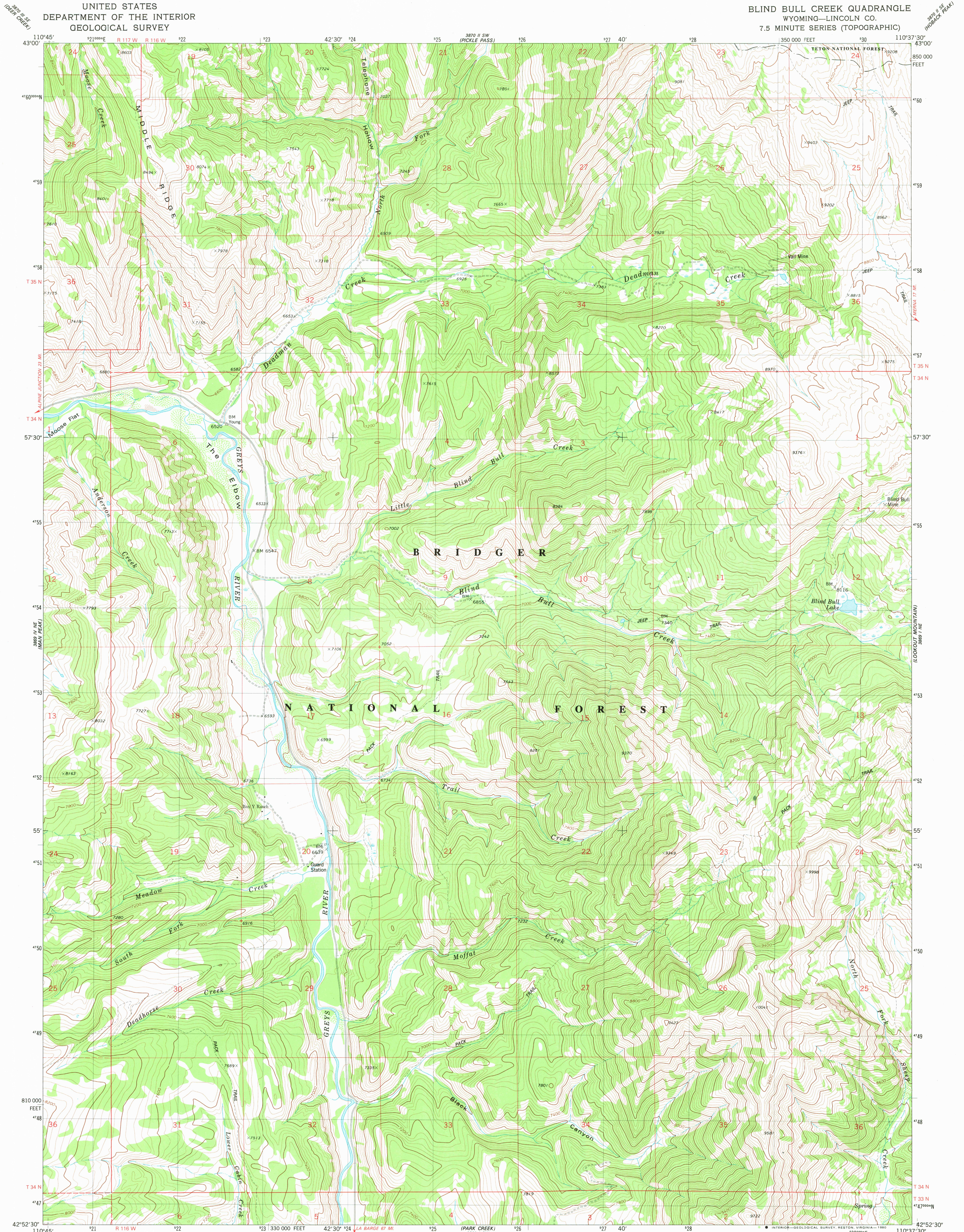
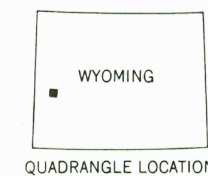
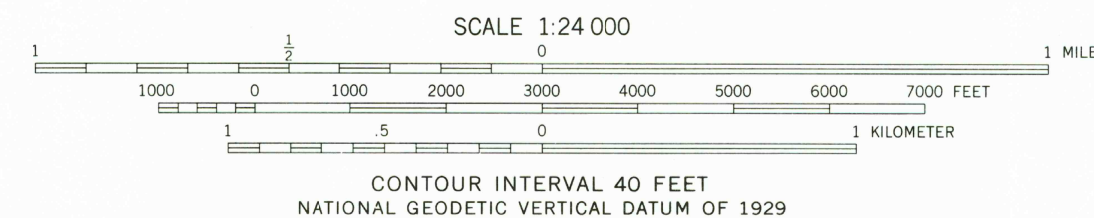
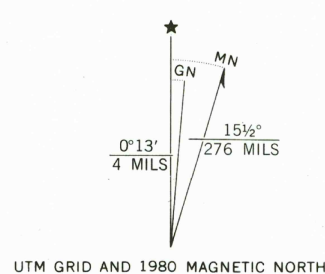


UNITED STATES
DEPARTMENT OF THE INTERIOR
GEOLOGICAL SURVEY

BLIND BULL CREEK QUADRANGLE
WYOMING—LINCOLN CO.
7.5 MINUTE SERIES (TOPOGRAPHIC)



Mapped, edited, and published by the Geological Survey
Control by USGS and NOS/NOAA
Topography by photogrammetric methods from aerial photographs
taken 1973. Field checked 1974. Map edited 1980
Projection and 10,000-foot grid ticks: Wyoming
coordinate system, west zone (transverse Mercator)
1000-meter Universal Transverse Mercator grid, zone 12
1927 North American datum
To place on the predicted North American Datum 1983
move the projection lines 11 meters north and
62 meters east as shown by dashed corner ticks
Where omitted, land lines have not been established
Fine red dashed lines indicate selected fence lines
There may be private inholdings within the boundaries of
the National or State reservations shown on this map



ROAD CLASSIFICATION
Primary highway, hard surface
Secondary highway, hard surface
Light-duty road, hard or improved surface
Unimproved road
Interstate Route
U. S. Route
State Route

BLIND BULL CREEK, WYO.
N4252.5—W1037.5/7.5
1980
DMA 3869 I NW—SERIES Y874