

4170 IV SW
(HAYS PARK)

4170 IV SE
(HAYS PARK)

4170 IV SW
(HAYS PARK)

4170 IV SE
(HAYS PARK)

4170 IV SW
(HAYS PARK)

4170 IV SE
(HAYS PARK)

4170 IV SW
(HAYS PARK)

4170 IV SE
(HAYS PARK)

4170 IV SW
(HAYS PARK)

4170 IV SE
(HAYS PARK)

4170 IV SW
(HAYS PARK)

4170 IV SE
(HAYS PARK)

4170 IV SW
(HAYS PARK)

4170 IV SE
(HAYS PARK)

4170 IV SW
(HAYS PARK)

4170 IV SE
(HAYS PARK)

4170 IV SW
(HAYS PARK)

4170 IV SE
(HAYS PARK)

4170 IV SW
(HAYS PARK)

4170 IV SE
(HAYS PARK)

4170 IV SW
(HAYS PARK)

4170 IV SE
(HAYS PARK)

4170 IV SW
(HAYS PARK)

4170 IV SE
(HAYS PARK)

4170 IV SW
(HAYS PARK)

4170 IV SE
(HAYS PARK)

4170 IV SW
(HAYS PARK)

4170 IV SE
(HAYS PARK)

4170 IV SW
(HAYS PARK)

4170 IV SE
(HAYS PARK)

4170 IV SW
(HAYS PARK)

4170 IV SE
(HAYS PARK)

4170 IV SW
(HAYS PARK)

4170 IV SE
(HAYS PARK)

4170 IV SW
(HAYS PARK)

4170 IV SE
(HAYS PARK)

4170 IV SW
(HAYS PARK)

4170 IV SE
(HAYS PARK)

4170 IV SW
(HAYS PARK)

4170 IV SE
(HAYS PARK)

4170 IV SW
(HAYS PARK)

4170 IV SE
(HAYS PARK)

4170 IV SW
(HAYS PARK)

4170 IV SE
(HAYS PARK)

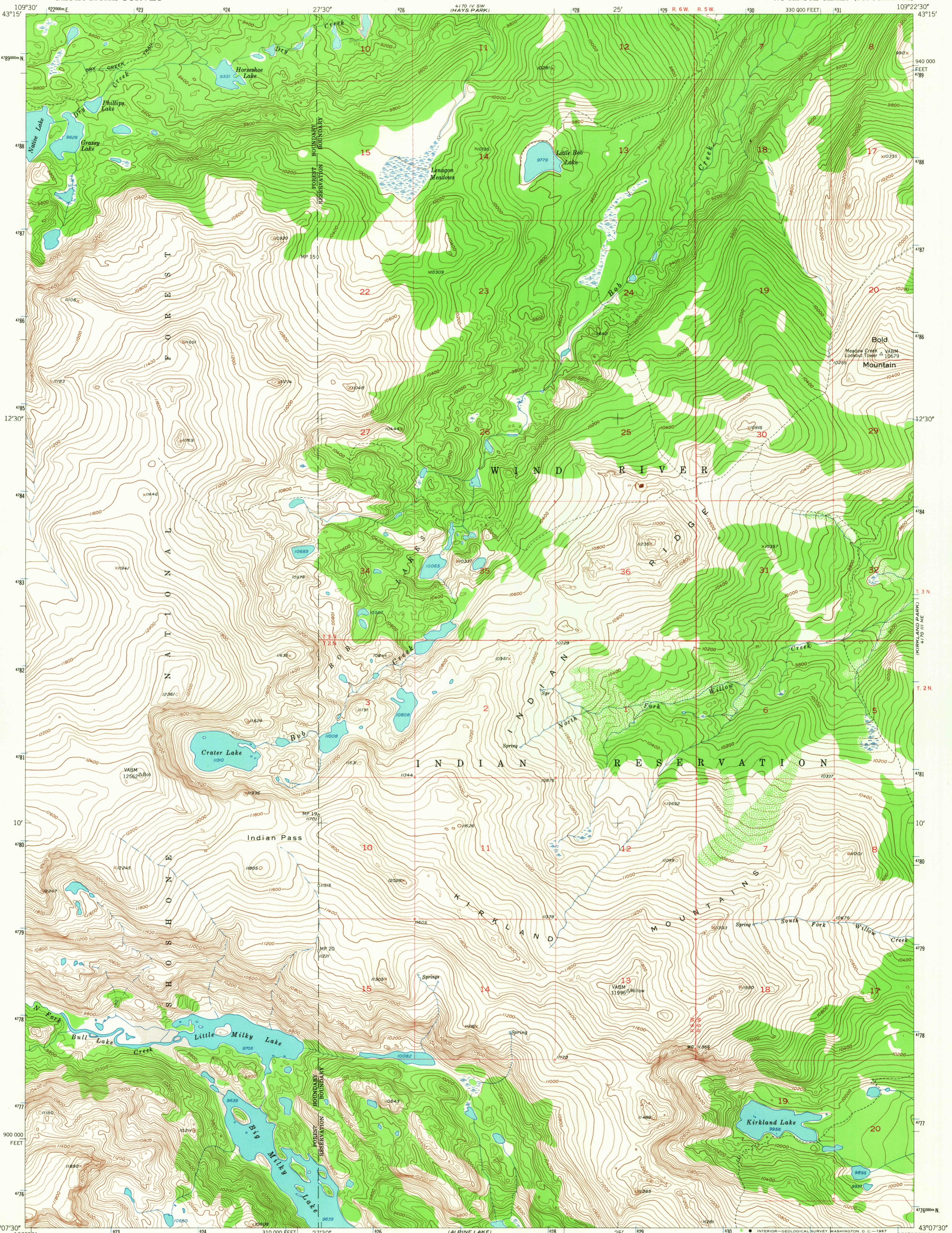
4170 IV SW
(HAYS PARK)

4170 IV SE
(HAYS PARK)

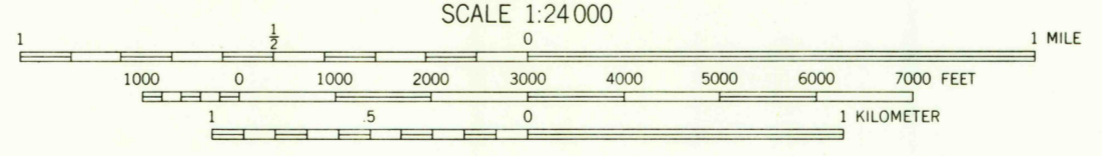
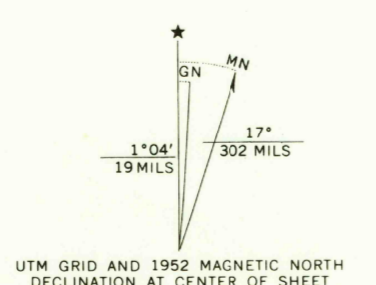
4170 IV SW
(HAYS PARK)

4170 IV SE
(HAYS PARK)

4170 IV SW
(HAYS PARK)

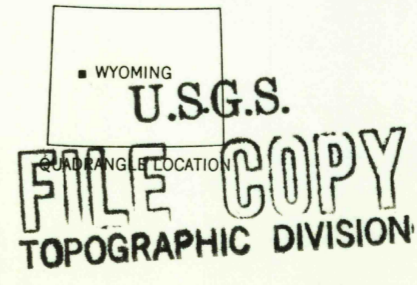


Mapped, edited, and published by the Geological Survey as part of the Department of the Interior program for the development of the Missouri River Basin Control by USGS and USC&GS
Topography from aerial photographs by multiplex methods
Aerial photographs taken 1949. Field check 1952
Polyconic projection. 1927 North American datum
10,000-foot grid based on Wyoming coordinate system, west central zone
Dashed land lines indicate approximate locations
Land lines unsurveyed in parts of T. 2 N.—R. 6 W. and T. 2 N.—R. 5 W.
1000-meter Universal Transverse Mercator grid ticks, zone 12, shown in blue



CONTOUR INTERVAL 40 FEET
DATUM IS MEAN SEA LEVEL

THIS MAP COMPLIES WITH NATIONAL MAP ACCURACY STANDARDS
FOR SALE BY U.S. GEOLOGICAL SURVEY, DENVER, COLORADO 80225 OR WASHINGTON, D. C. 20242
A FOLDER DESCRIBING TOPOGRAPHIC MAPS AND SYMBOLS IS AVAILABLE ON REQUEST



ROAD CLASSIFICATION	
Heavy-duty	4 LANE 6 LANE
Medium-duty	4 LANE 6 LANE
Light-duty	Unimproved dirt
U. S. Route	State Route

BOB LAKES, WYO.
N4307.5-W10922.5/7.5
1952
AMS 4170 III NW—SERIES V874

2295
JUL 12 1967

RETURN TO:
USGS AND HISTORICAL MAP ARCHIVES

4170 IV SW
(HAYS PARK)

4170 IV SE
(HAYS PARK)

4170 IV SW
(HAYS PARK)

4170 IV SE
(HAYS PARK)