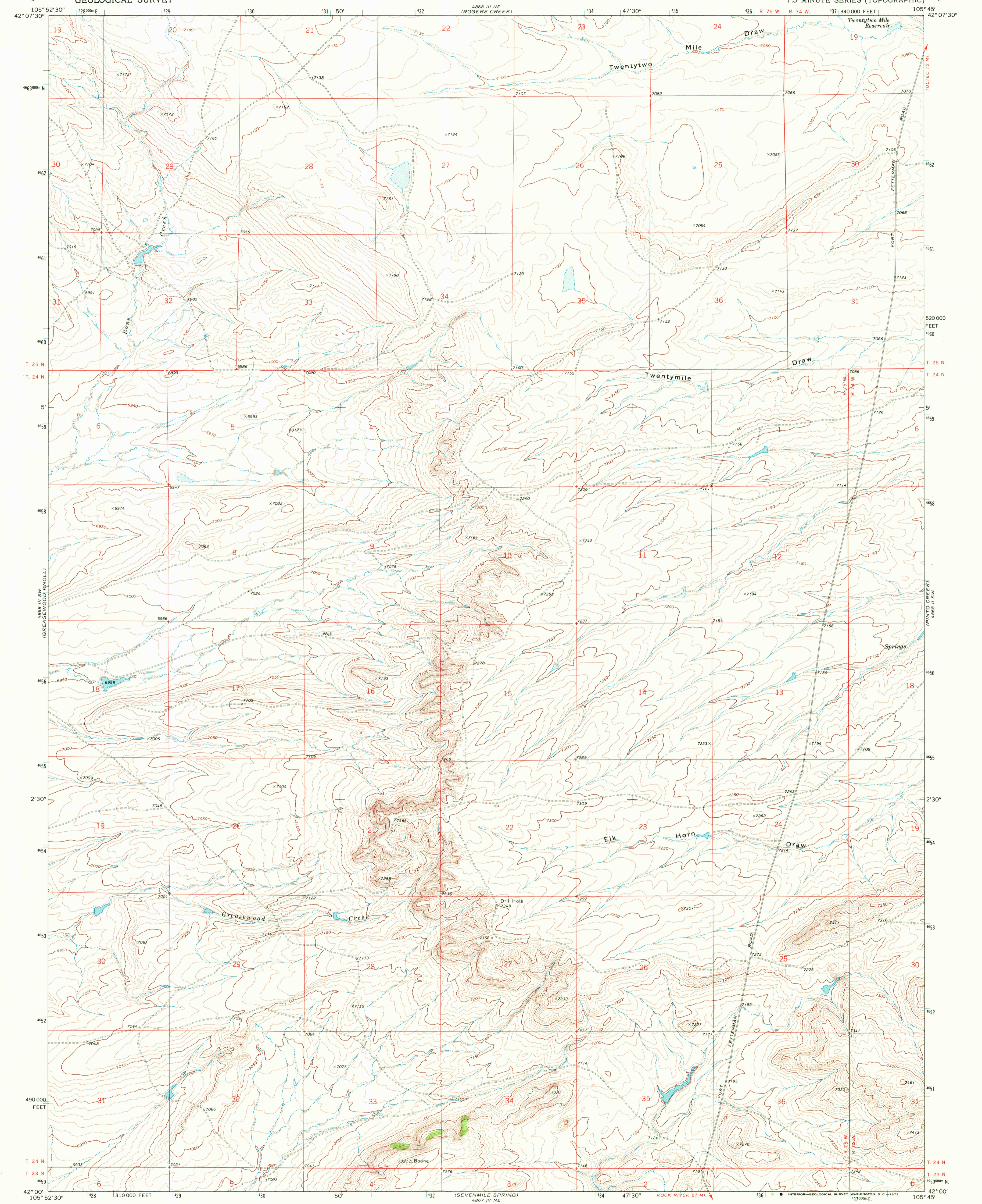
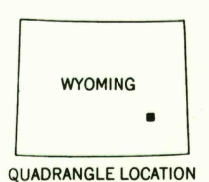
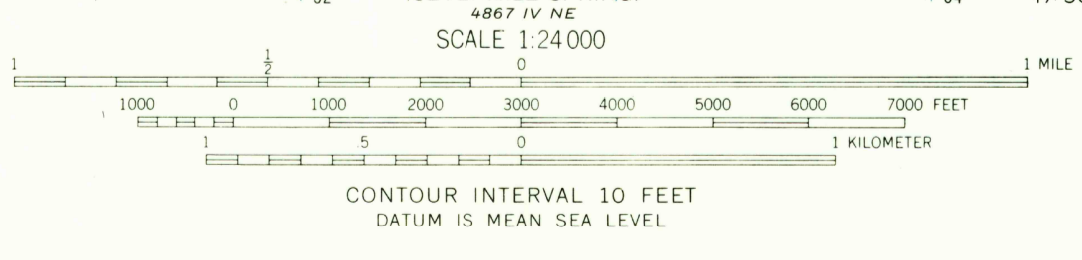
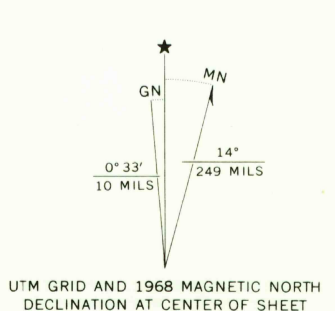


UNITED STATES
DEPARTMENT OF THE INTERIOR
GEOLOGICAL SURVEY

BOOT HEEL SE QUADRANGLE
WYOMING-ALBANY CO.
7.5 MINUTE SERIES (TOPOGRAPHIC)



Mapped, edited, and published by the Geological Survey
Control by USGS and USC&GS
Topography by photogrammetric methods from aerial photographs taken 1967. Field checked 1968
Polyconic projection. 1927 North American datum
10,000-foot grid based on Wyoming coordinate system, east zone
1000-meter Universal Transverse Mercator grid ticks, zone 13, shown in blue



ROAD CLASSIFICATION
Light-duty road, all weather, Unimproved road, fair or dry weather
improved surface weather

THIS MAP COMPLIES WITH NATIONAL MAP ACCURACY STANDARDS
FOR SALE BY U. S. GEOLOGICAL SURVEY, DENVER, COLORADO 80225, OR WASHINGTON, D. C. 20242
A FOLDER DESCRIBING TOPOGRAPHIC MAPS AND SYMBOLS IS AVAILABLE ON REQUEST

HISTORICAL FILE
TOPOGRAPHIC DIVISION

BOOT HEEL SE, WYO.
N4200-W10545/7.5

1968

AMS 4868 III SE-SERIES V874

APR 4 1972

RETURN TO:
USGS MID HISTORICAL MAP ARCHIVES

2130