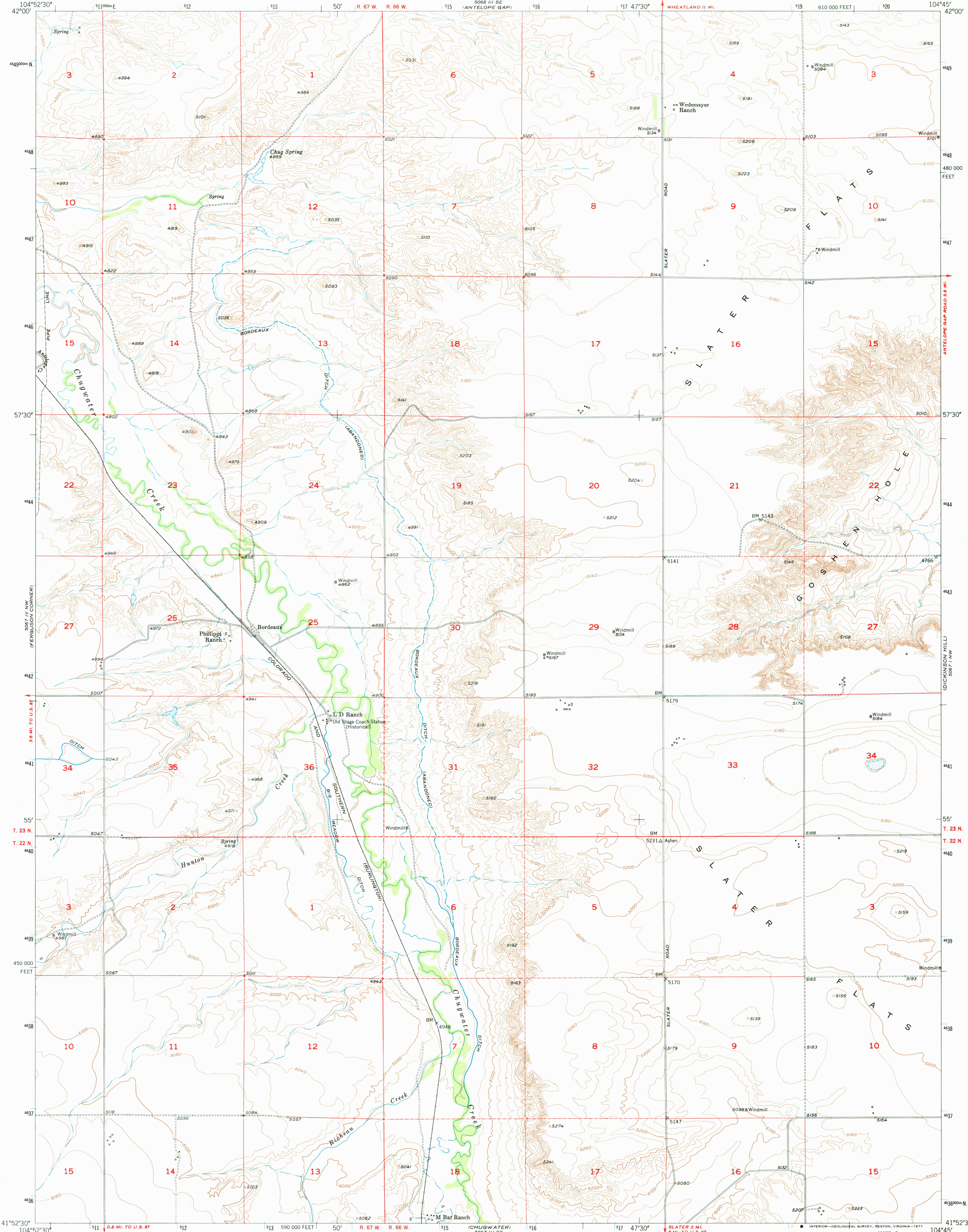
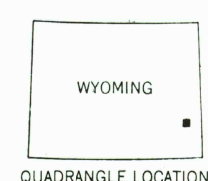
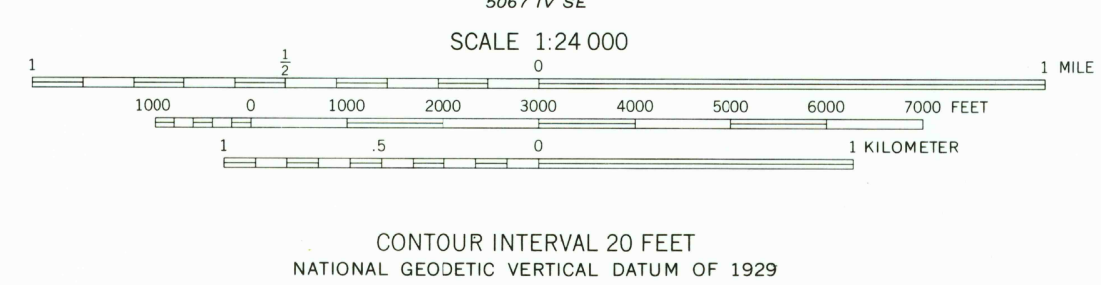
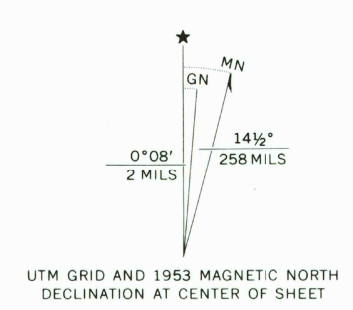


UNITED STATES
DEPARTMENT OF THE INTERIOR
GEOLOGICAL SURVEY

BORDEAUX QUADRANGLE
WYOMING—PLATTE CO.
7.5 MINUTE SERIES (TOPOGRAPHIC)



Mapped, edited, and published by the Geological Survey as part of the Department of the Interior program for the development of the Missouri River Easin Control by USGS and USC&GS
Topography from aerial photographs by multiplex methods Aerial photographs taken 1949. Field checked 1953
Polyconic projection. 1927 North American datum 10,000-foot grid based on Wyoming coordinate system, east zone
Dashed land lines indicate approximate locations 1000-meter Universal Transverse Mercator grid ticks, zone 13, shown in blue



ROAD CLASSIFICATION

Heavy-duty	4 LANE 6 LANE	Light-duty
Medium-duty	4 LANE 6 LANE	Unimproved dirt
U. S. Route		State Route

THIS MAP COMPLIES WITH NATIONAL MAP ACCURACY STANDARDS
FOR SALE BY U. S. GEOLOGICAL SURVEY, DENVER, COLORADO 80225, OR RESTON, VIRGINIA 22092
A FOLDER DESCRIBING TOPOGRAPHIC MAPS AND SYMBOLS IS AVAILABLE ON REQUEST

USGS
Historical File
Topographic Division

BORDEAUX, WYO.
N4152.5-W10445/7.5
1953

AMS 5067 IV NE—SERIES V874

RETURN TO:
USGS NWD HISTORICAL MAP ARCHIVES

JAN 4 1977

1800