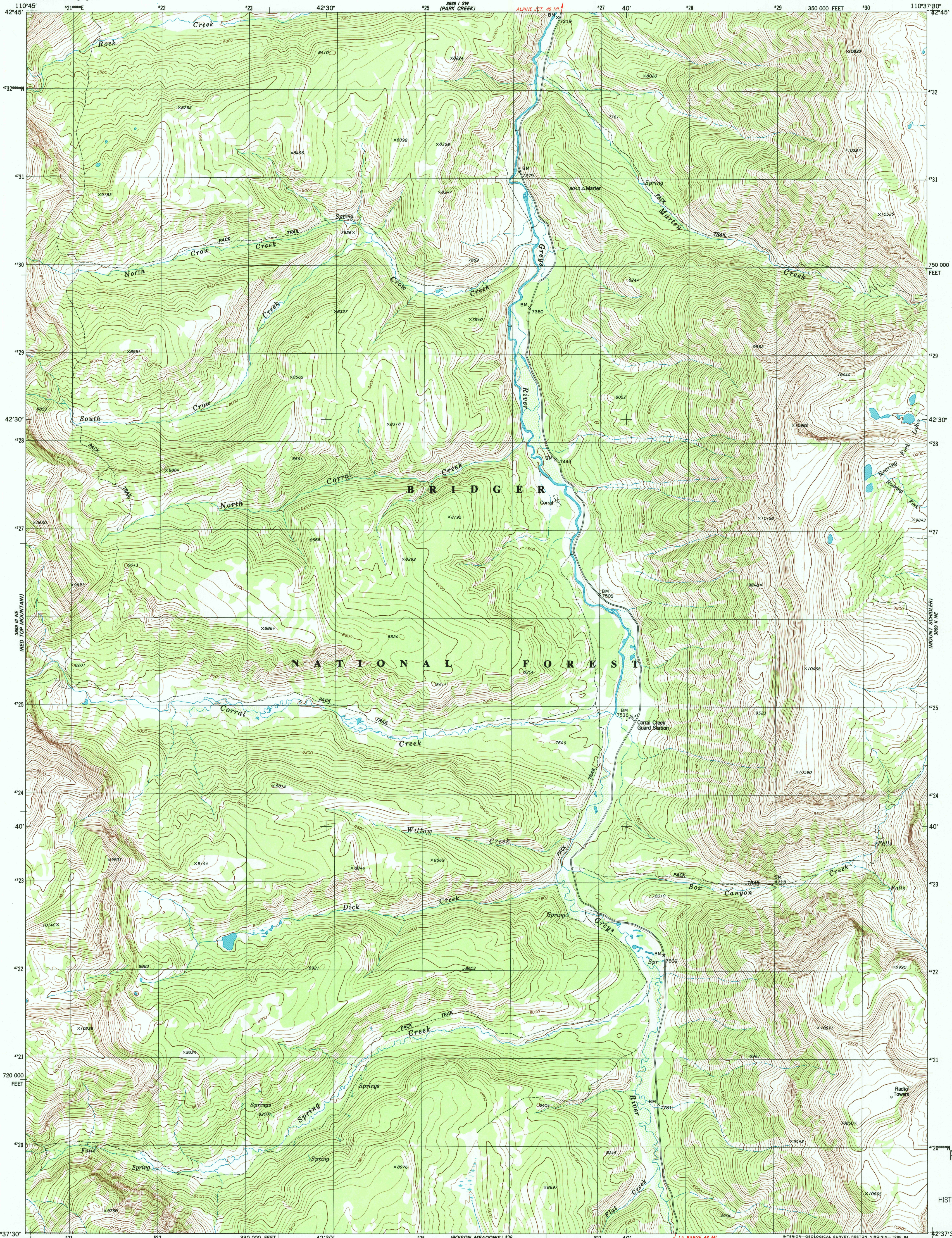




U.S. DEPARTMENT OF THE INTERIOR
U.S. GEOLOGICAL SURVEY

BOX CANYON CREEK QUADRANGLE
WYOMING-LINCOLN CO
7.5 MINUTE SERIES (TOPOGRAPHIC)

3889 I SE
(TRIPLE PEAK)



Mapped, edited, and published by the Geological Survey

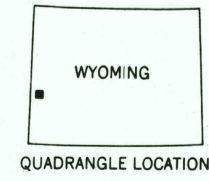
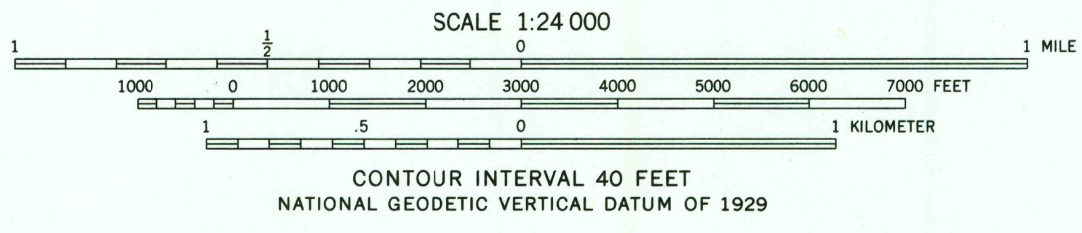
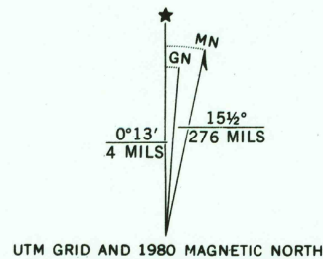
Control by USGS and NOS/NOAA
Topography by photogrammetric methods from aerial photographs
taken 1973. Field checked 1974. Map edited 1980

Projection and 10,000-foot grid ticks: Wyoming
coordinate system, west zone (transverse Mercator)
1000-meter Universal Transverse Mercator grid, zone 12
1927 North American datum

To place on the predicted North American Datum 1983
move the projection lines 11 meters north and
62 meters east as shown by dashed corner ticks

Fine red dashed lines indicate selected fence lines

Land lines have not been established in this area
There may be private inholdings within the boundaries of the
National or State reservations shown on this map



ROAD CLASSIFICATION	
Primary highway, hard surface	Light-duty road, hard or improved surface
Secondary highway, hard surface	Unimproved road
Interstate Route	U. S. Route
	State Route

BOX CANYON CREEK, WYO.
N4237.5-W11037.5/7.5

1980

DMA 3889 II NW-SERIES V874



RECEIVED
JUN 10 2003
USGS NWL
HISTORICAL MAP ARCHIVES

USGS Library
Reston, VA
Topo Archive

