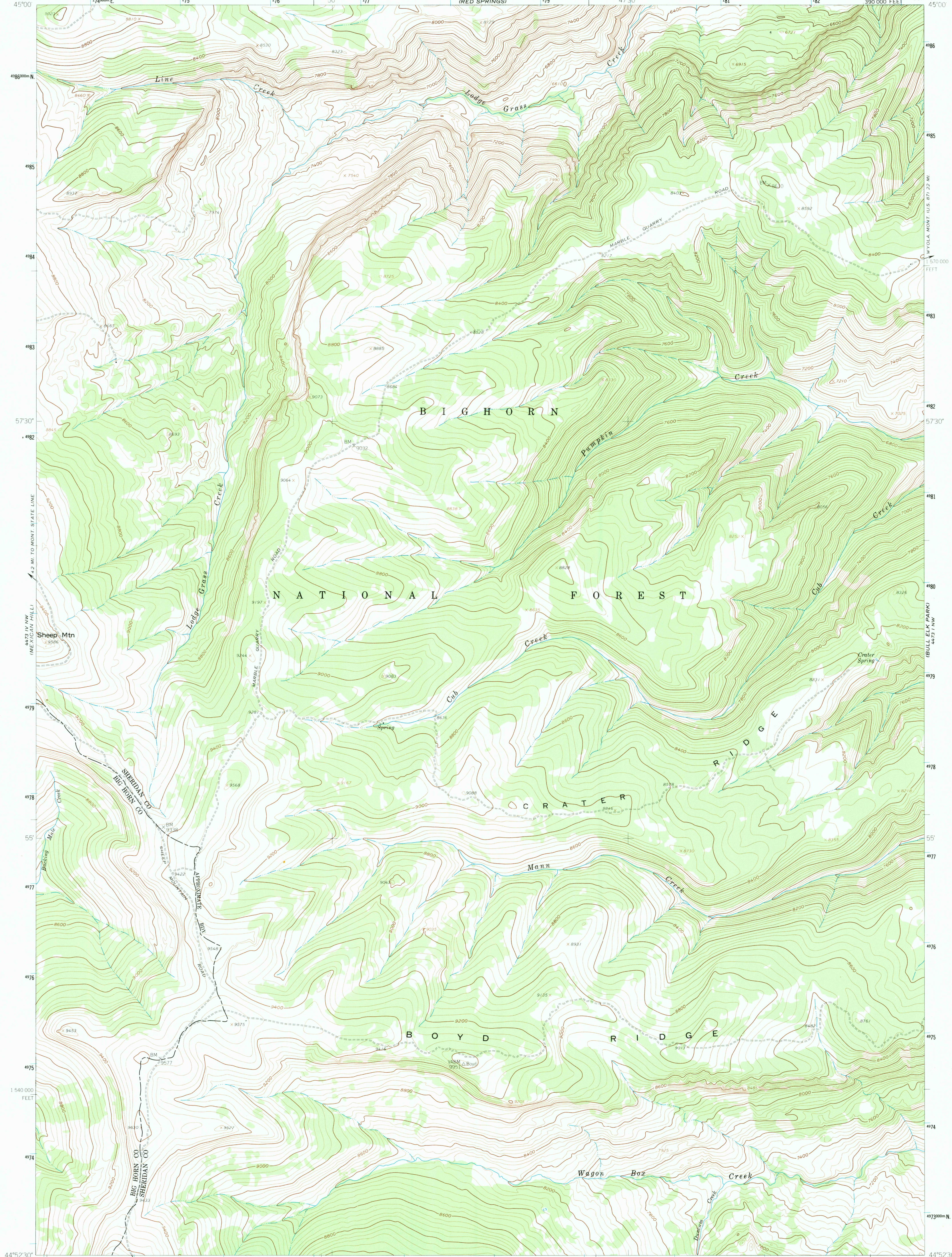


44°52'30" N
107°52'30" W
107°52'30" W
107°52'30" W

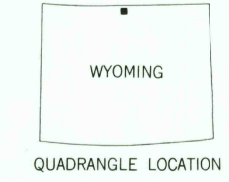
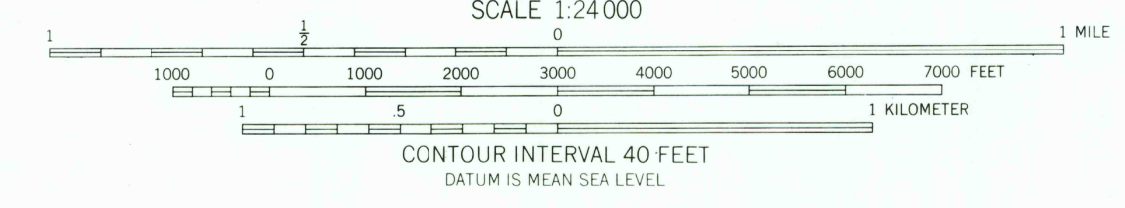
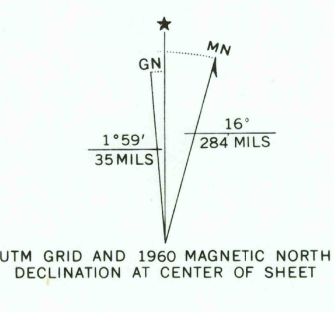
44°52'30" N
107°45' W
107°45' W
107°45' W



44°52'30" N
107°52'30" W
107°52'30" W
107°52'30" W

44°52'30" N
107°45' W
107°45' W
107°45' W

Mapped, edited, and published by the Geological Survey as part of the Department of the Interior program for the development of the Missouri River Basin Control by USGS and USC&GS
Topography by photogrammetric methods from aerial photographs taken 1957. Field checked 1960
Polyconic projection. 1927 North American datum 10,000 foot grid based on Wyoming coordinate system, east central zone
1000 meter Universal Transverse Mercator grid ticks, zone 13, shown in blue



THIS MAP COMPLIES WITH NATIONAL MAP ACCURACY STANDARDS
FOR SALE BY U.S. GEOLOGICAL SURVEY, DENVER, COLORADO 80225, OR WASHINGTON, D.C. 20242
A FOLDER DESCRIBING TOPOGRAPHIC MAPS AND SYMBOLS IS AVAILABLE ON REQUEST

ROAD CLASSIFICATION
Unimproved dirt - - - - -

BOYD RIDGE, WYO.
N4452 5-W10745/7.5

1960
AMS 4473 IV NE-SERIES V874

RETURN TO:
USGS AND HISTORICAL MAP ARCHIVES

7-20-84