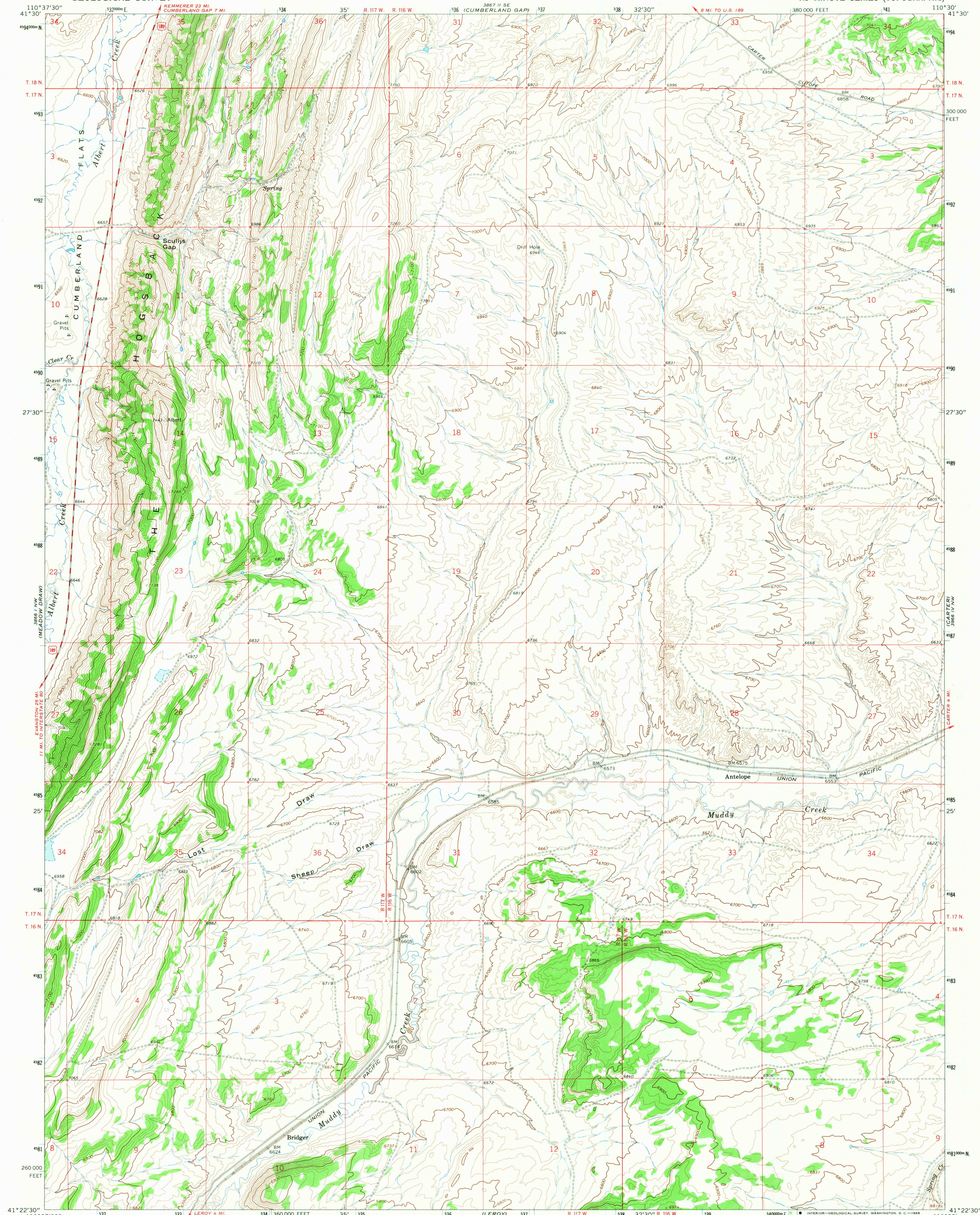


UNITED STATES
DEPARTMENT OF THE INTERIOR
GEOLOGICAL SURVEY

BRIDGER QUADRANGLE
WYOMING—UINTA CO.
7.5 MINUTE SERIES (TOPOGRAPHIC)



Mapped, edited, and published by the Geological Survey

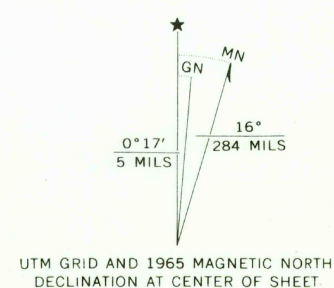
Control by USGS and USC&GS

Topography by photogrammetric methods from aerial photographs taken 1964. Field checked 1965

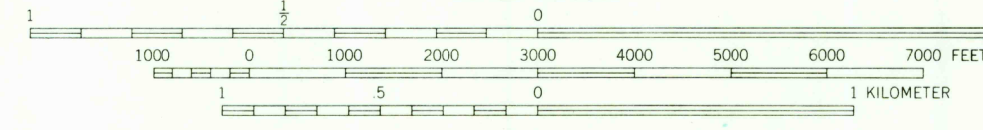
Polyconic projection. 1927 North American datum

10,000-foot grid based on Wyoming coordinate system, west zone

1000-meter Universal Transverse Mercator grid ticks, zone 12, shown in blue



SCALE 1:24,000



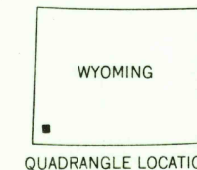
CONTOUR INTERVAL 20 FEET

DATUM IS MEAN SEA LEVEL

ROAD CLASSIFICATION

Medium-duty — Light-duty

Unimproved dirt — U.S. Route



U.S.G.S.

FILE COPY
TOPOGRAPHIC DIVISION

BRIDGER, WYO.

N4122.5—W11030.7.5

1965

AMS 3866 I NE—SERIES V974

RETURN TO:
USGS AND HISTORICAL MAP ARCHIVES

2850

AUG 14 1968