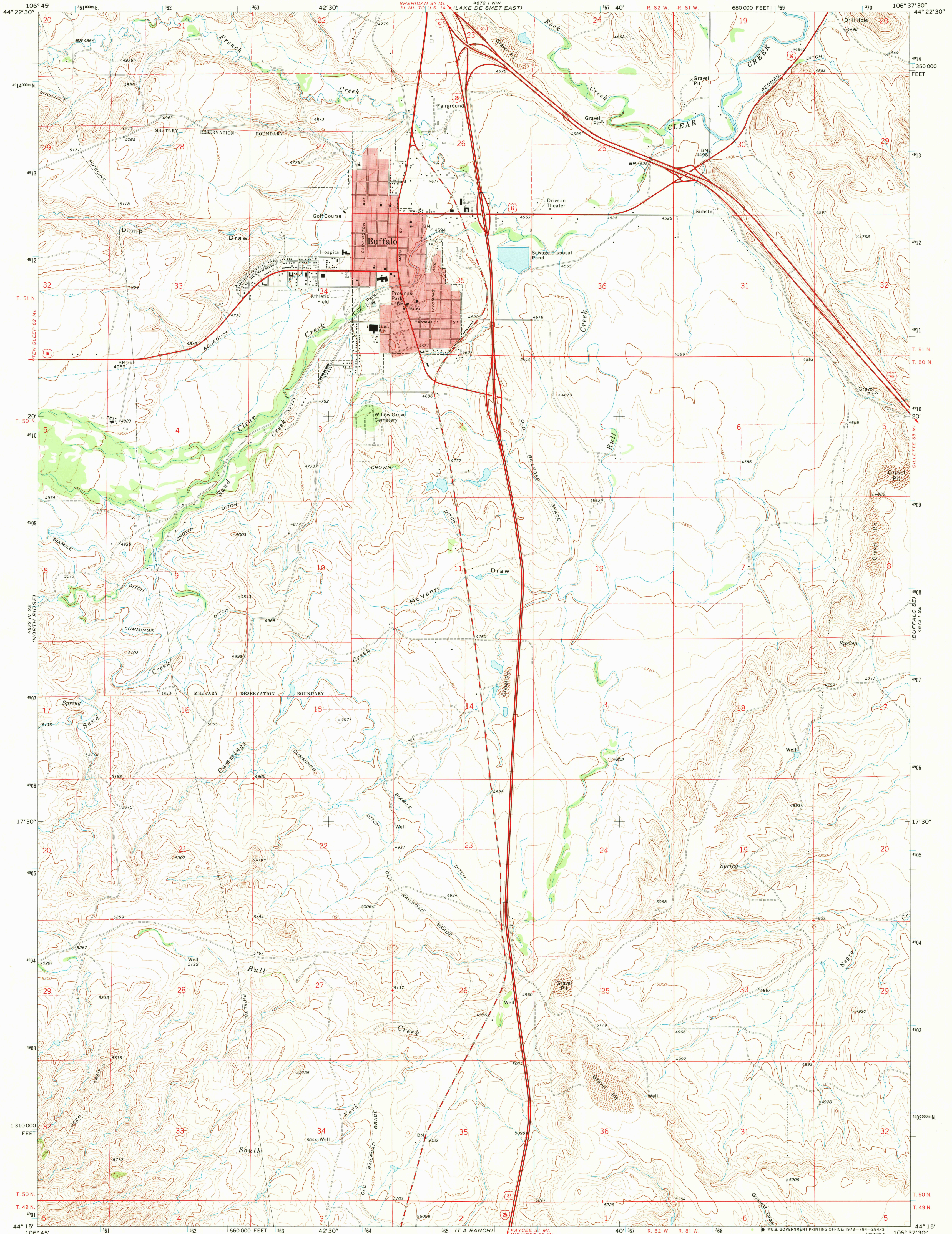


UNITED STATES  
DEPARTMENT OF THE INTERIOR  
GEOLOGICAL SURVEY

BUFFALO QUADRANGLE  
WYOMING—JOHNSON CO.  
7.5 MINUTE SERIES (TOPOGRAPHIC)



Mapped, edited, and published by the Geological Survey

Control by USGS and USC&GS

Topography by photogrammetric methods from aerial photographs taken 1969. Field checked 1970

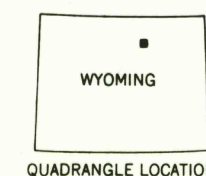
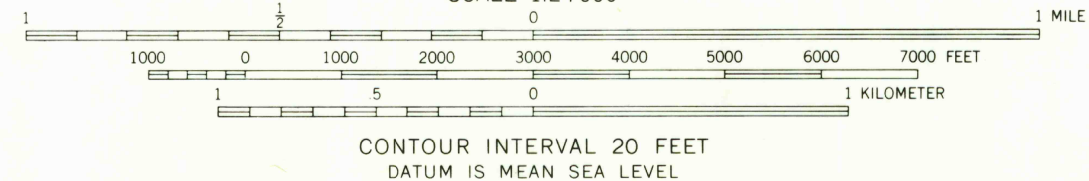
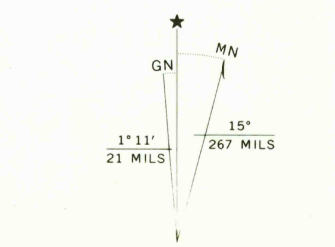
Polyconic projection. 1927 North American datum

10,000-foot grid based on Wyoming coordinate system, east central zone

1000-meter Universal Transverse Mercator grid ticks, zone 13, shown in blue

Red tint indicates areas in which only landmark buildings are shown

Fine red dashed lines indicate selected fence lines



ROAD CLASSIFICATION

- Primary highway, hard surface
- Secondary highway, hard surface
- Interstate Route
- U. S. Route
- Light-duty road, hard or improved surface
- Unimproved road
- State Route

THIS MAP COMPLIES WITH NATIONAL MAP ACCURACY STANDARDS  
FOR SALE BY U. S. GEOLOGICAL SURVEY, DENVER, COLORADO 80225, OR WASHINGTON, D. C. 20242  
A FOLDER DESCRIBING TOPOGRAPHIC MAPS AND SYMBOLS IS AVAILABLE ON REQUEST

BUFFALO, WYO.  
N4415-W10637.5/7.5

1970

AMS 4672 I SW—SERIES V874

RETURN TO:  
USGS AND HISTORICAL MAP ARCHIVE

JUN 27 1973

2500  
Dunham