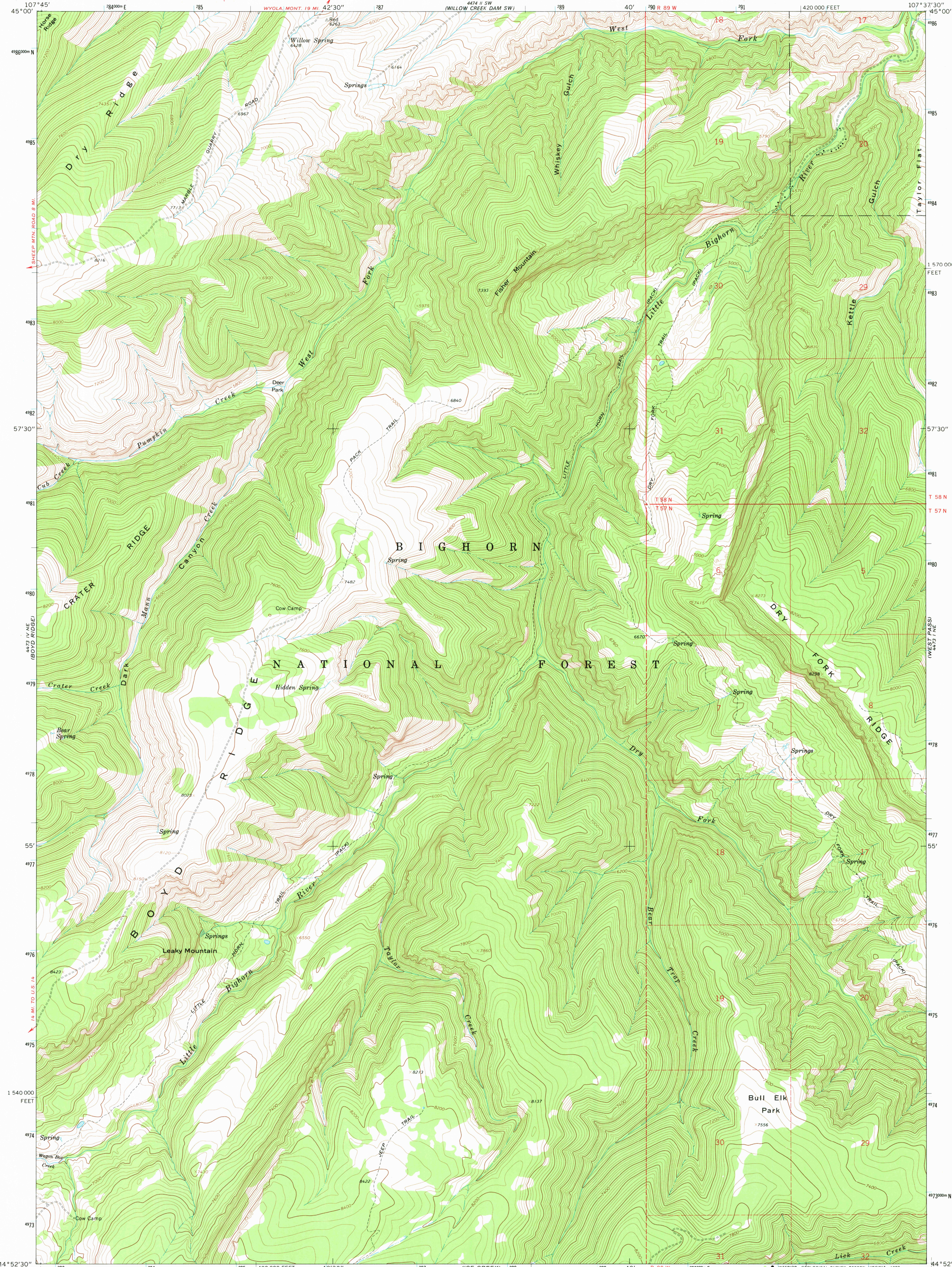
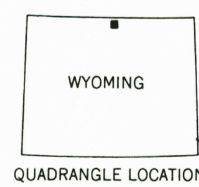
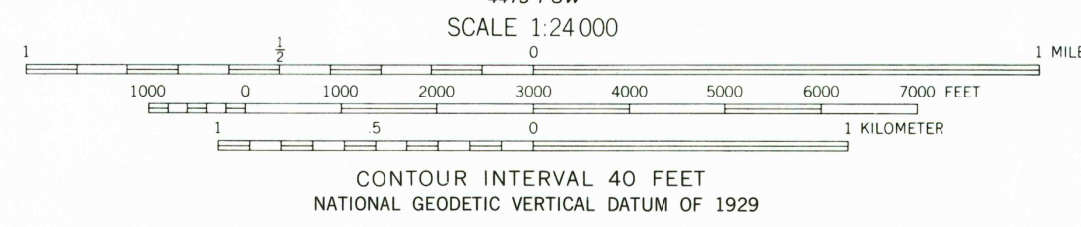
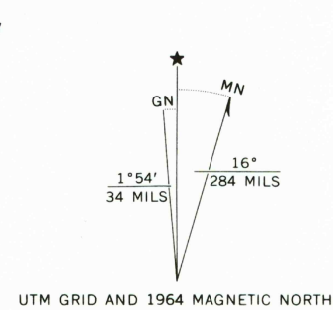


UNITED STATES
DEPARTMENT OF THE INTERIOR
GEOLOGICAL SURVEY

BULL ELK PARK QUADRANGLE
WYOMING—SHERIDAN CO.
7.5 MINUTE SERIES (TOPOGRAPHIC)



Mapped, edited, and published by the Geological Survey
Control by USGS and USC&GS
Topography by photogrammetric methods from aerial
photographs taken 1963. Field checked 1964
Polyconic projection. 1927 North American datum
10,000-foot grid based on Wyoming coordinate system,
east central zone
1000-meter Universal Transverse Mercator grid ticks,
zone 13, shown in blue
Where omitted, land lines have not been established
To place on the predicted North American Datum 1983
move the projection lines 8 meters north and
51 meters east as shown by dashed corner ticks
There may be private inholdings within the boundaries of the
National or State reservations shown on this map



ROAD CLASSIFICATION
Unimproved dirt =====

BULL ELK PARK, WYO.
N4452.5—W10737.5/7.5

1964
DMA 4473 I NW—SERIES V874

RETURN TO:
USGS AND HISTORICAL MAP ARCHIVES

USGS
Historical File
National Mapping Division

1300
APR 13 1981