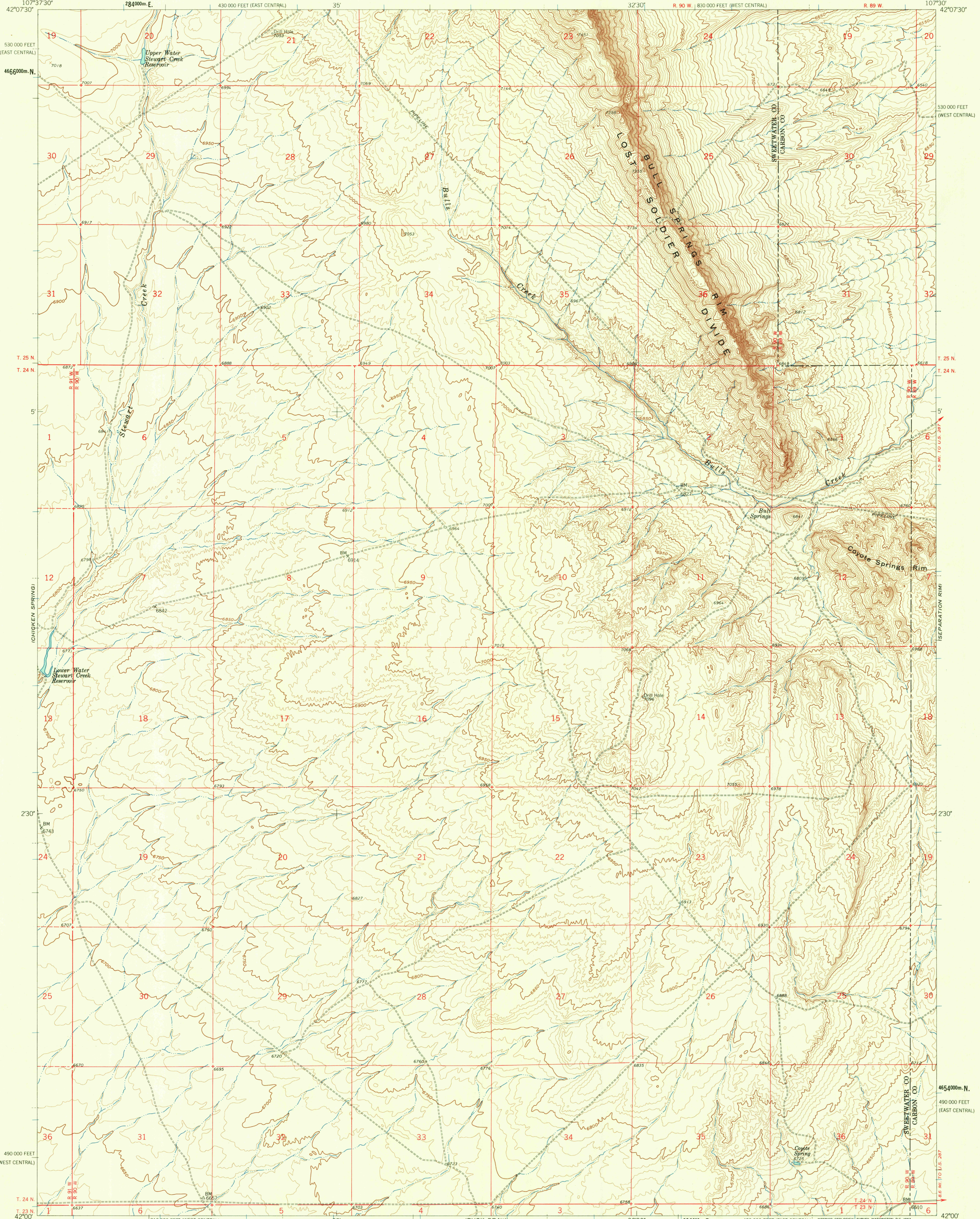


UNITED STATES
DEPARTMENT OF THE INTERIOR
GEOLOGICAL SURVEY

BULL SPRINGS QUADRANGLE
WYOMING
7.5 MINUTE SERIES (TOPOGRAPHIC)



Mapped, edited, and published by the Geological Survey as part of the Department of the Interior program for the development of the Missouri River Basin.

Control by USGS and USC&GS

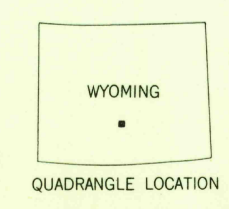
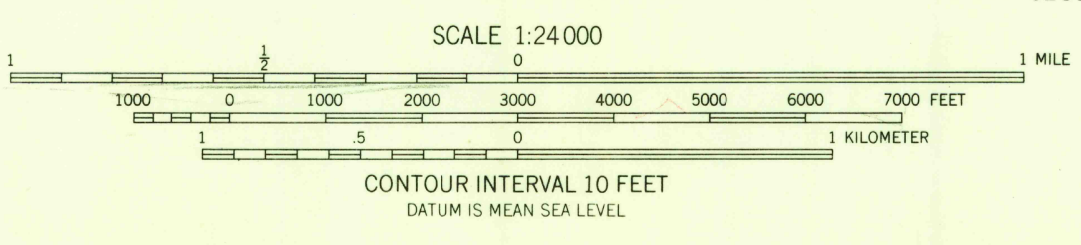
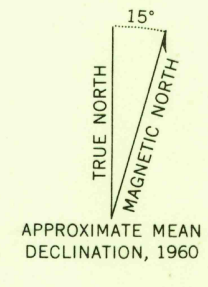
Topography by photogrammetric methods from aerial photographs taken 1957. Field checked 1960

Polyconic projection. 1927 North American datum

10,000-foot grid based on Wyoming coordinate system, west central and east central zones

1000-meter Universal Transverse Mercator grid ticks, zone 13, shown in blue

Dashed land lines indicate approximate locations



ROAD CLASSIFICATION

Light-duty ————— Unimproved dirt - - - - -

THIS MAP COMPLIES WITH NATIONAL MAP ACCURACY STANDARDS
FOR SALE BY U.S. GEOLOGICAL SURVEY, DENVER 25, COLORADO OR WASHINGTON 25, D.C.
A FOLDER DESCRIBING TOPOGRAPHIC MAPS AND SYMBOLS IS AVAILABLE ON REQUEST

U.S.G.S. BULL SPRINGS, WYO.
N4200-W10730/7.5
TOPOGRAPHIC DIVISION
1960

RETURN TO:
USGS AND HISTORICAL MAP ARCHIVES

JUN 15 1962

2215