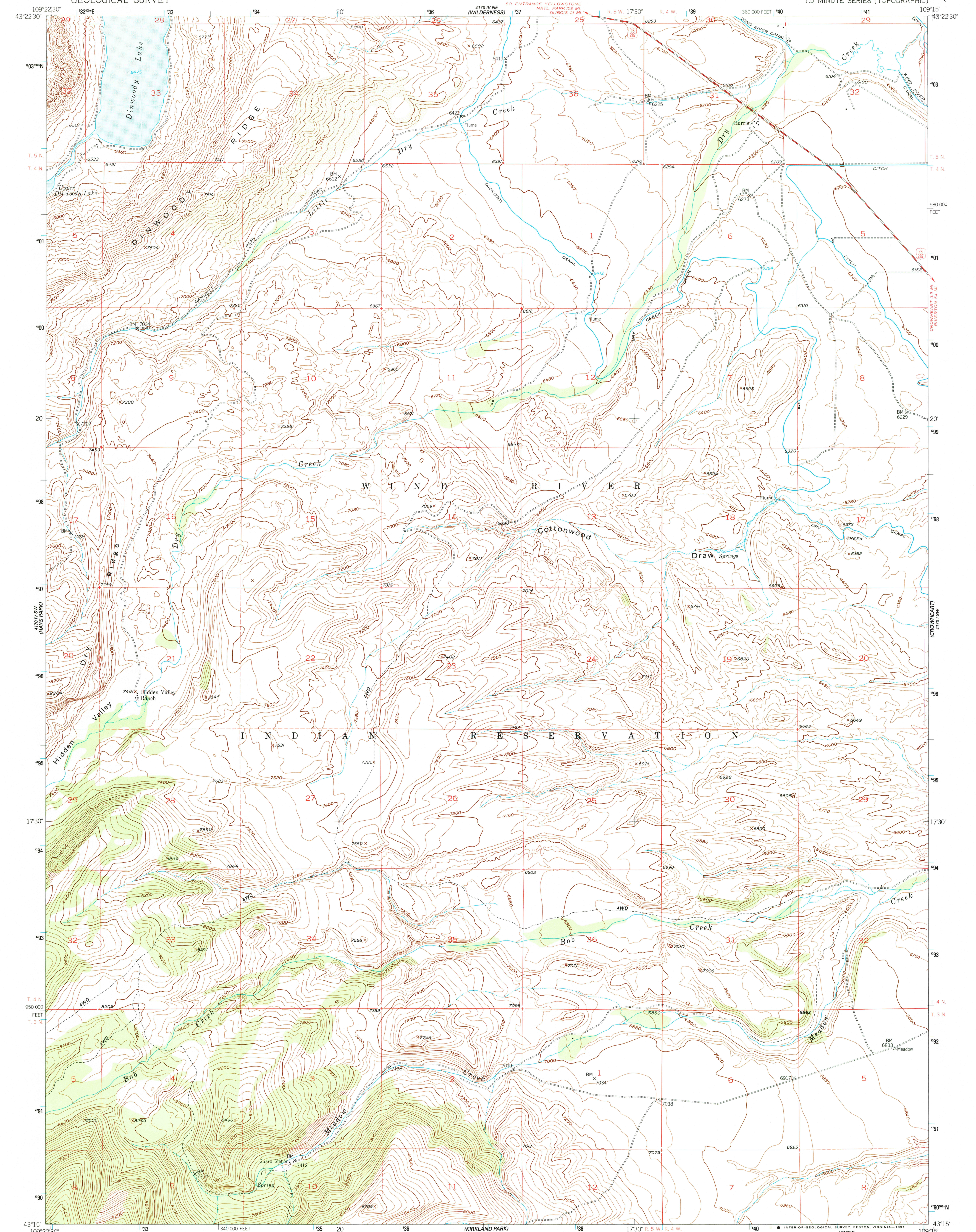
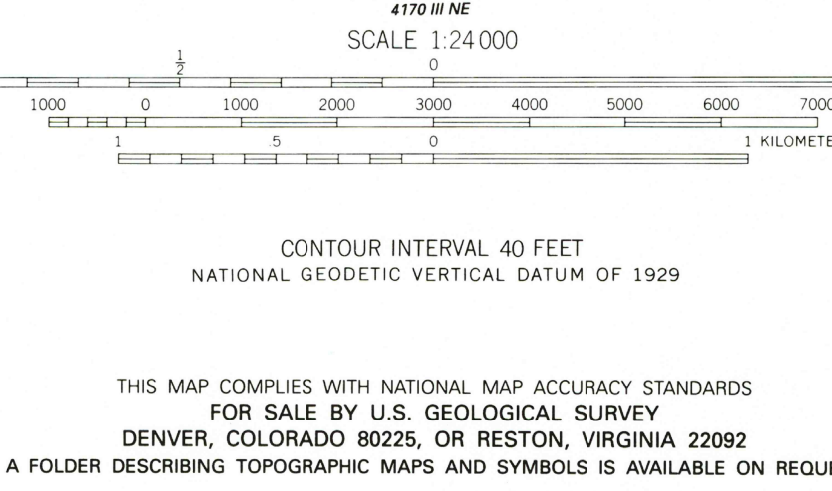
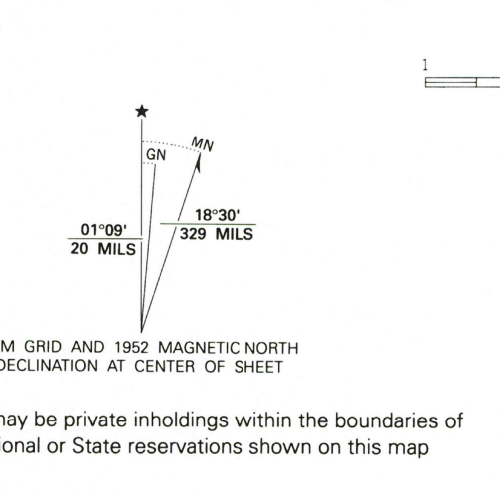


109°22'30"
43°22'30"

109°15'
43°22'30"



Mapped, edited, and published by the Geological Survey as part of the Department of the Interior program for the development of the Missouri River Basin Control by USGS and NOS/NOAA
Topography from aerial photographs by multiplex methods Aerial photographs taken 1949. Field checked 1952
Polyconic projection. 1927 North American Datum 10,000-foot grid based on Wyoming coordinate system, west central zone. 1000-meter Universal Transverse Mercator grid ticks, zone 12, shown in blue
The difference between 1927 North American Datum and North American Datum of 1983 (NAD 83) for 7.5 minute intersections is given in USGS Bulletin 1875. The NAD 83 is shown by dashed corner ticks
Dashed land lines indicate approximate locations



ROAD CLASSIFICATION
Medium-duty — Unimproved dirt — U.S. Route

WYOMING
QUADRANGLE LOCATION

USGS WMD HISTORICAL MAP ARCHIVES
SEP 18 1991
REC'D FILE COPY

BURRIS, WYO.
43109-C3-TF-024
1952
PHOTOINSPECTED 1975
DMA 4170 IV SE-SERIES V874

Map photoinspected 1975
No major culture or drainage changes observed

109°22'30"
43°22'30"

109°15'
43°22'30"