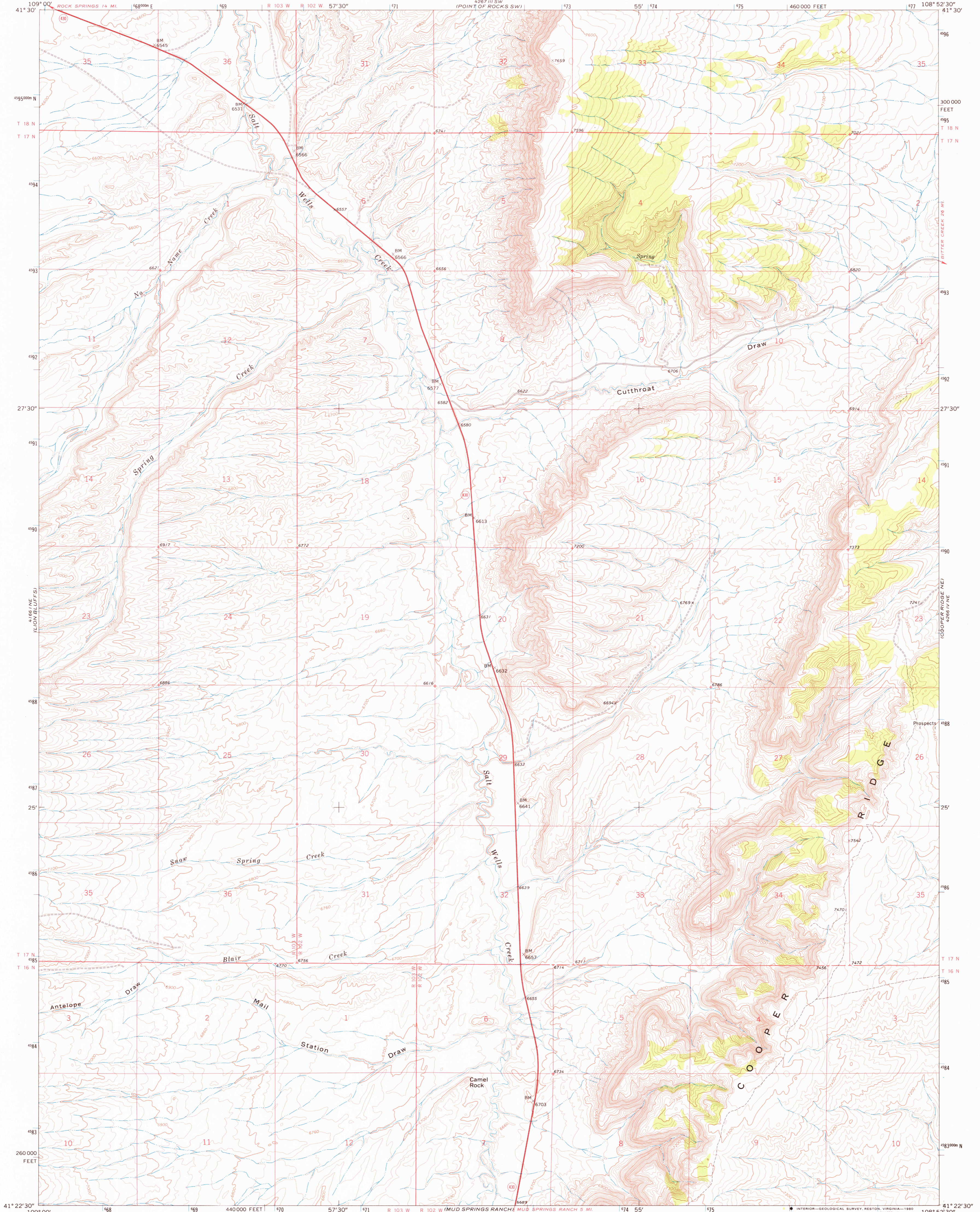


UNITED STATES  
DEPARTMENT OF THE INTERIOR  
GEOLOGICAL SURVEY

CAMEL ROCK QUADRANGLE  
WYOMING—SWEETWATER CO.  
7.5 MINUTE SERIES (TOPOGRAPHIC)



Mapped, edited, and published by the Geological Survey  
Control by USGS and USC&GS  
Topography by photogrammetric methods from aerial photographs taken 1967. Field checked 1968  
Polyconic projection. 1927 North American datum 10,000-foot grid based on Wyoming coordinate system, west central zone  
1000-meter Universal Transverse Mercator grid ticks, zone 12, shown in blue  
To place on the predicted North American Datum 1983 move the projection lines 8 meters north and 57 meters east as shown by dashed corner ticks

Map photoinspected 1976  
No major culture or drainage changes observed

U.T.M. GRID AND 1968 MAGNETIC NORTH DECLINATION AT CENTER OF SHEET  
1°22' 24 MILS  
15° 276 MILS

SCALE 1:24,000  
1 MILE  
0 1000 2000 3000 4000 5000 6000 7000 FEET  
0 1 2 3 4 5 6 7 8 9 10 KILOMETER

CONTOUR INTERVAL 20 FEET  
NATIONAL GEODETIC VERTICAL DATUM OF 1929

THIS MAP COMPLIES WITH NATIONAL MAP ACCURACY STANDARDS  
FOR SALE BY U. S. GEOLOGICAL SURVEY, DENVER, COLORADO 80225, OR RESTON, VIRGINIA 22092  
A FOLDER DESCRIBING TOPOGRAPHIC MAPS AND SYMBOLS IS AVAILABLE ON REQUEST

ROAD CLASSIFICATION  
Primary highway, all weather, Light-duty road, all weather, hard surface  
Improved surface  
Unimproved road, fair or dry weather  
State Route

USGS  
Historical File  
Topographic Division  
CAMEL ROCK, WYO.  
N4122.5-W10852.5/7.5

1968  
PHOTOINSPECTED 1976  
DMA 4266 IV NW—SERIES V874

SEP 10 1980  
1500