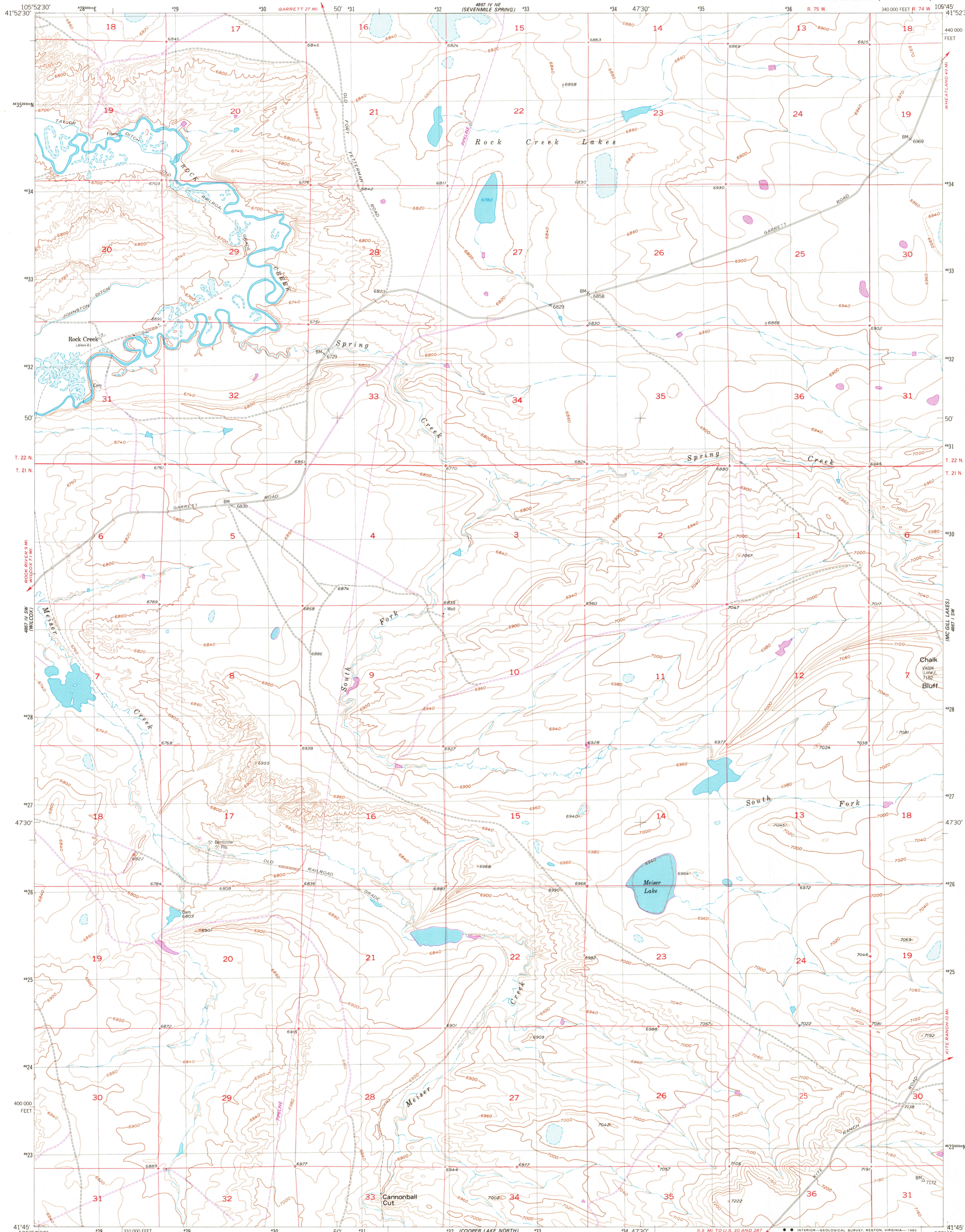


UNITED STATES  
DEPARTMENT OF THE INTERIOR  
GEOLOGICAL SURVEY

CANNONBALL CUT QUADRANGLE  
WYOMING-ALBANY CO.  
7.5 MINUTE SERIES (TOPOGRAPHIC)

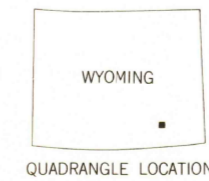


Mapped, edited, and published by the Geological Survey as part of the Department of the Interior program for the development of the Missouri River Basin. Control by USGS and NOS/NOAA. Topography from aerial photographs by multiplex methods. Aerial photographs taken 1947. Field check 1955. Polyconic projection, 1927 North American datum. 10,000-foot grid based on Wyoming coordinate system, east zone. 1000-meter Universal Transverse Mercator grid, zone 13. To place on the predicted North American Datum 1983 move the projection lines 7 meters north and 49 meters east as shown by dashed corner ticks.

UTM GRID AND 1981 MAGNETIC NORTH DECLINATION AT CENTER OF SHEET  
0°33' 10 MILS  
13° 231 MILS

SCALE 1:24 000  
1 1000 0 1000 2000 3000 4000 5000 6000 7000 FEET  
1 5 0 1 KILOMETER  
CONTOUR INTERVAL 20 FEET  
DOTTED LINES REPRESENT 10-FOOT CONTOURS  
NATIONAL GEODETIC VERTICAL DATUM OF 1929

THIS MAP COMPLIES WITH NATIONAL MAP ACCURACY STANDARDS  
FOR SALE BY U. S. GEOLOGICAL SURVEY, DENVER, COLORADO 80225, OR RESTON, VIRGINIA 22092  
A FOLDER DESCRIBING TOPOGRAPHIC MAPS AND SYMBOLS IS AVAILABLE ON REQUEST



ROAD CLASSIFICATION  
Light duty ————— Unimproved dirt - - - - -

CANNONBALL CUT, WYO.  
N4145—W10545/7.5  
1955  
PHOTOREVISED 1981  
DMA 4867 IV SE—SERIES V874

RETURN TO:  
USGS AND HISTORICAL MAP ARCHIVES

1982  
SEP 8  
1982