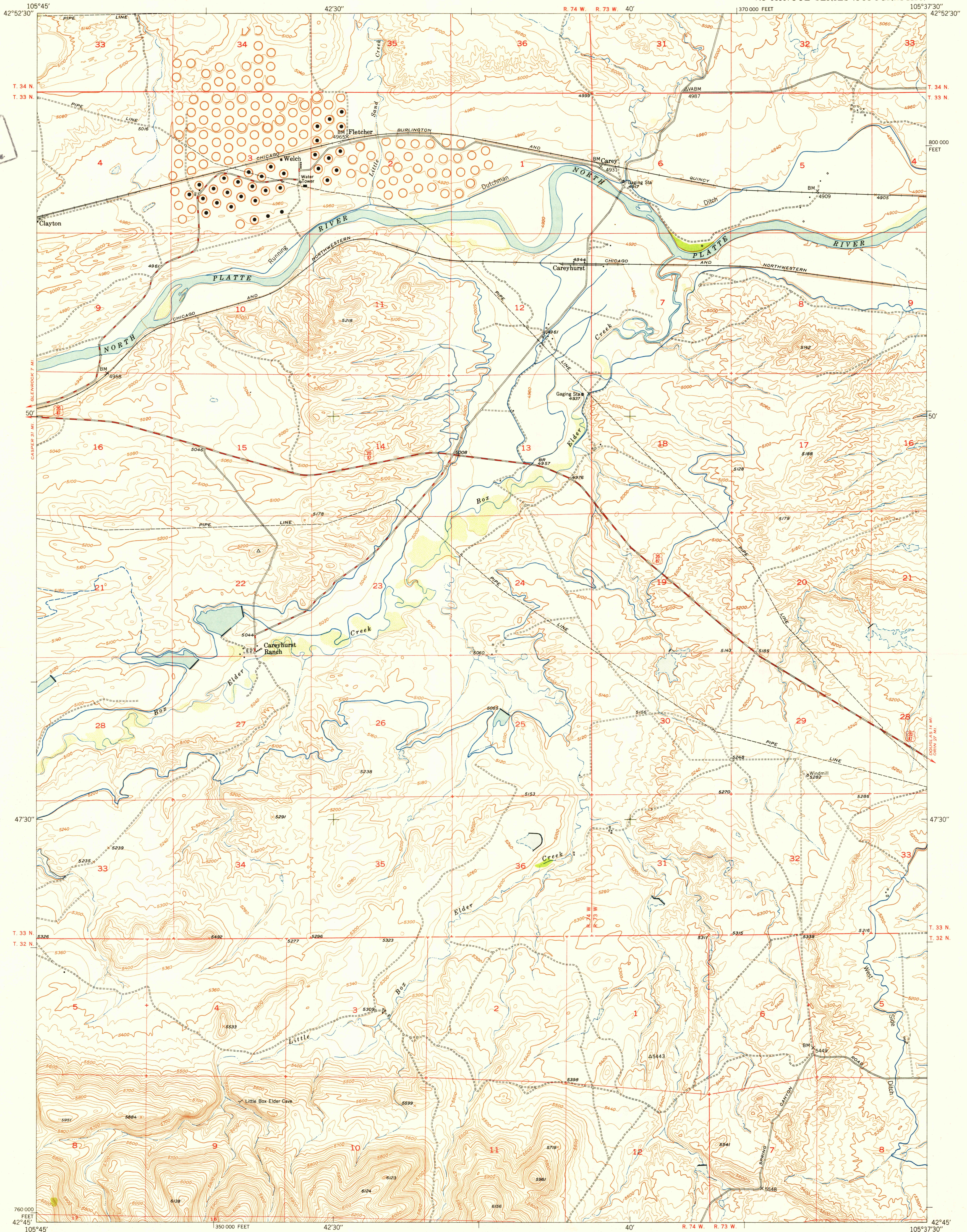


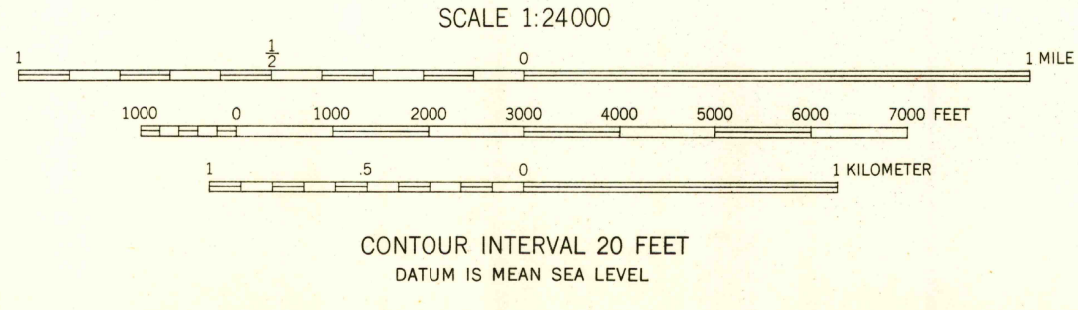
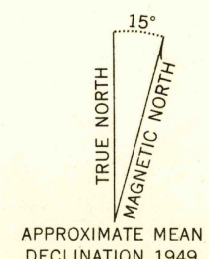
GILBERT LAKE



U.S.G.S  
FILE COPY  
Inspection and Editing

U.S.G.S  
FILE COPY  
Inspection and Editing

Mapped, edited, and published by the Geological Survey as part of the Department of the Interior program for the development of the Missouri River Basin. Control by USGS and USC&GS. Topography from aerial photographs by multiplex methods. Aerial photographs taken June 1947. Field check 1949. Polyconic projection. 1927 North American datum. 10,000-foot grid based on Wyoming coordinate system, east zone.



ROAD CLASSIFICATION

HARD-SURFACE ALL WEATHER ROADS	DRY WEATHER ROADS
Heavy-duty ——— 2 LANE 16 LANE	Improved dirt ———
Medium-duty ——— 4 LANE 16 LANE	Unimproved dirt - - - - -
Loose-surface, graded, or narrow hard-surface - - - - -	
U. S. Route	State Route

U.S.G.S  
FILE COPY  
Inspection and Editing

CAREYHURST, WYO.  
N4245-W10537.5/7.5  
EDITION OF 1950

THIS MAP COMPLIES WITH NATIONAL MAP ACCURACY STANDARDS  
FOR SALE BY U. S. GEOLOGICAL SURVEY, DENVER, COLORADO OR WASHINGTON 25, D. C.

RETURN TO:  
USGS MAP HISTORICAL MAP ARCHIVES