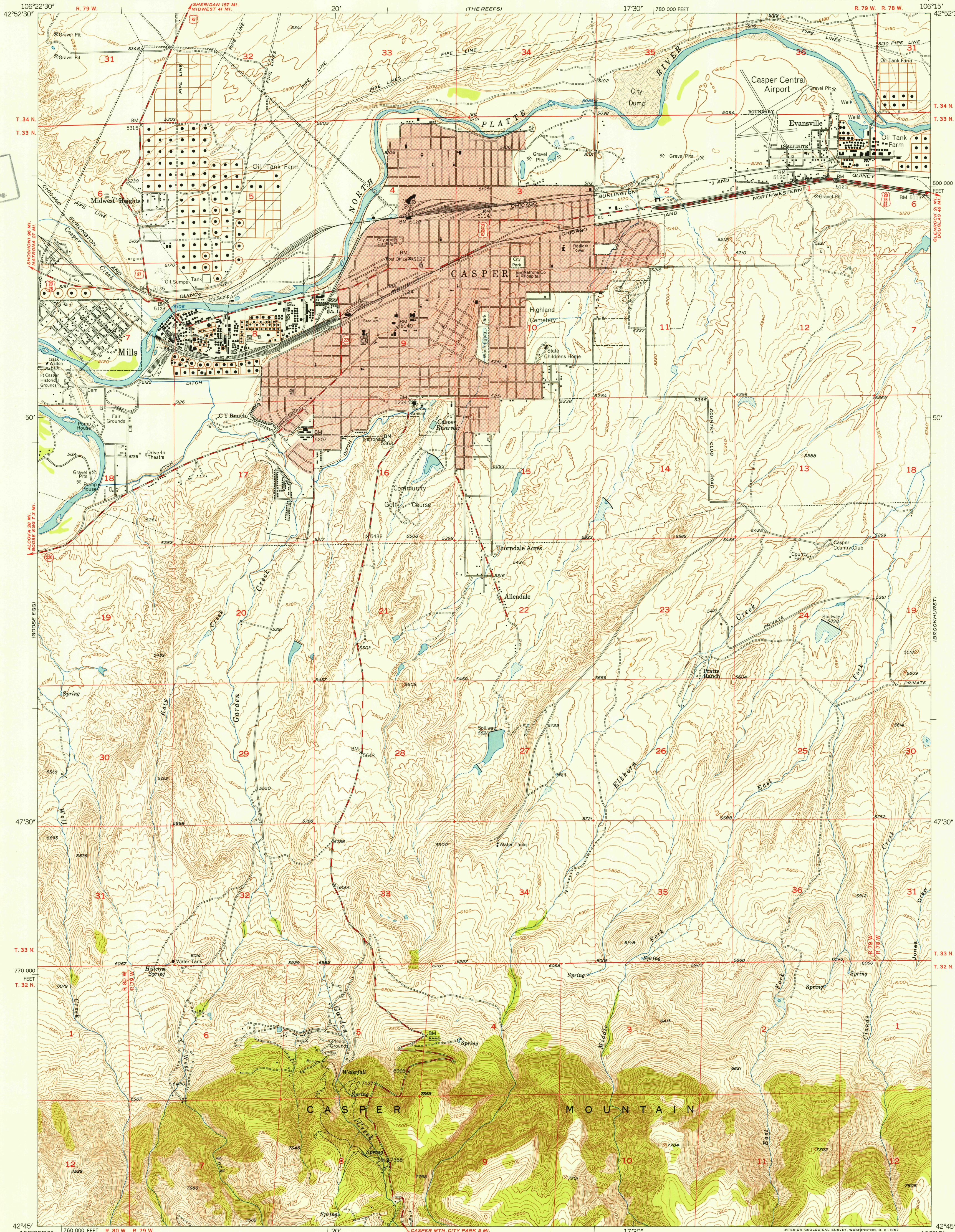


UNITED STATES  
DEPARTMENT OF THE INTERIOR  
GEOLOGICAL SURVEY

CASPER QUADRANGLE  
WYOMING-NATRONA CO.  
7.5 MINUTE SERIES (TOPOGRAPHIC)



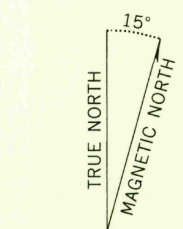
Mapped, edited, and published by the Geological Survey  
as part of the Department of the Interior program  
for the development of the Missouri River Basin  
Control by USGS and USC&GS

Topography from aerial photographs by multiplex methods  
and plane-table surveys. Aerial photographs taken 1947  
Field check 1951

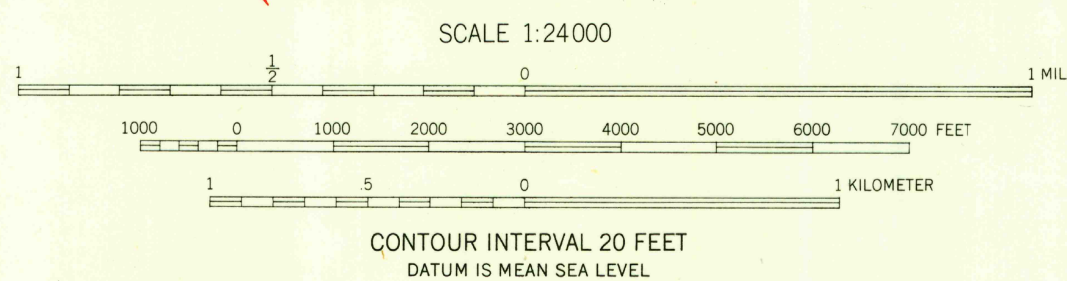
Polyconic projection. 1927 North American datum  
10,000-foot grid based on Wyoming coordinate system,  
east central zone

Red tint indicates area in which only  
landmark buildings are shown

Dashed land lines indicate approximate locations



APPROXIMATE MEAN  
DECLINATION, 1951



CONTOUR INTERVAL 20 FEET  
DATUM IS MEAN SEA LEVEL

THIS MAP COMPLIES WITH NATIONAL MAP ACCURACY STANDARDS  
FOR SALE BY U. S. GEOLOGICAL SURVEY, FEDERAL CENTER, DENVER, COLORADO OR WASHINGTON 25, D. C.  
A FOLDER DESCRIBING TOPOGRAPHIC MAPS AND SYMBOLS IS AVAILABLE ON REQUEST

ROAD CLASSIFICATION  
Heavy-duty ——— 4 LANE IS LANE Light-duty ———  
Medium-duty ——— 4 LANE IS LANE Unimproved dirt ———  
U. S. Route ——— State Route ———



CASPER, WYO.  
N4245-W10615/7.5  
1951

RETURN TO:  
USGS AND HISTORICAL MAP ARCHIVES

DEC 22 1952