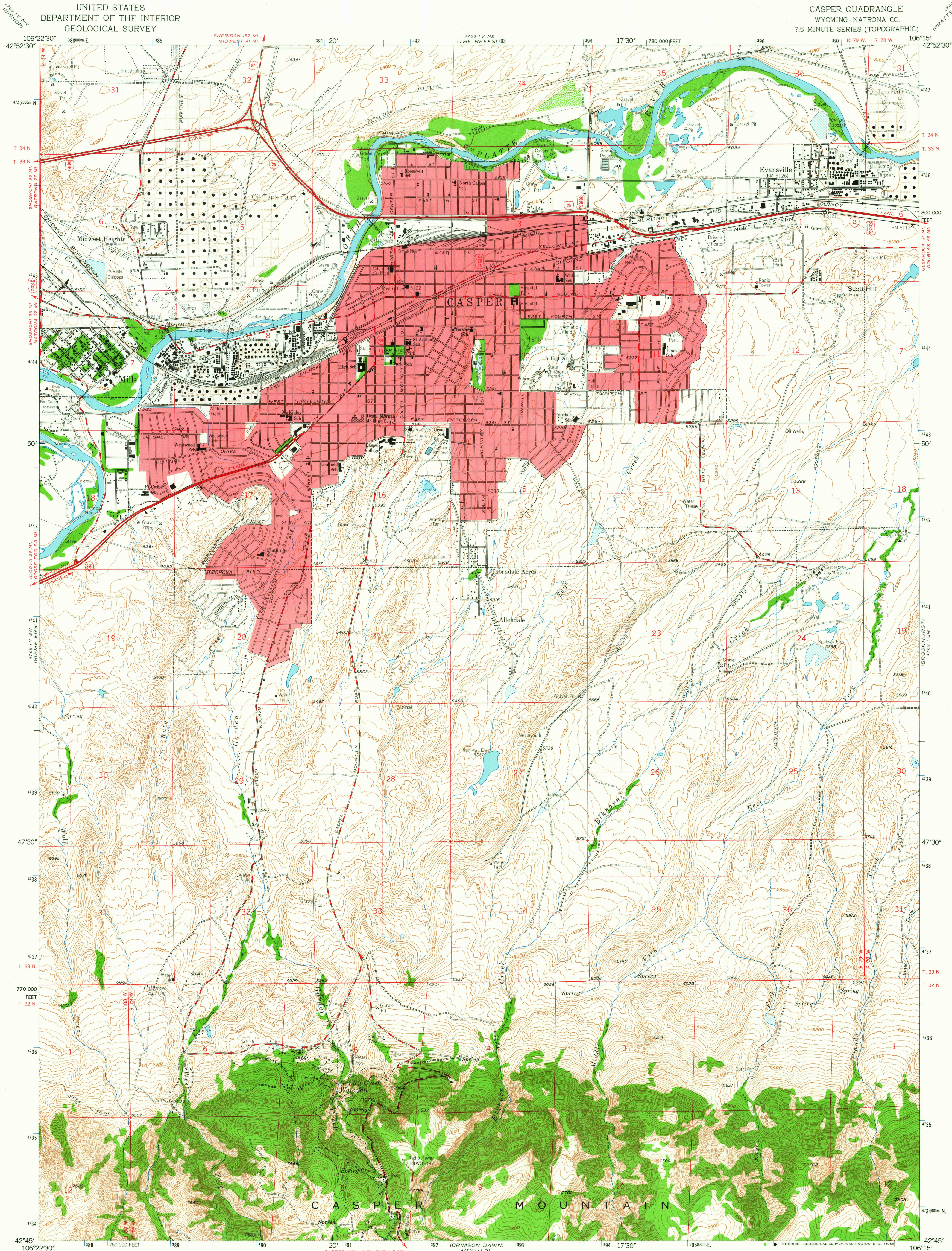


UNITED STATES
DEPARTMENT OF THE INTERIOR
GEOLOGICAL SURVEY

CASPER QUADRANGLE
WYOMING-NATRONA CO.
7.5 MINUTE SERIES (TOPOGRAPHIC)



Mapped, edited, and published by the Geological Survey as part of the Department of the Interior program for the development of the Missouri River Basin.

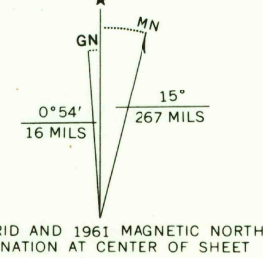
Control by USGS and USC&GS

Topography by photogrammetric methods from aerial photographs taken 1947 and planetable surveys 1951. Revised from aerial photographs taken 1960. Field checked 1961.

Polyconic projection. 1927 North American datum. 10,000 foot grid based on Wyoming coordinate system, east central zone 1000 meter Universal Transverse Mercator grid ticks, zone 13, shown in blue.

Red tint indicates areas in which only landmark buildings are shown.

Fine red dashed lines indicate selected fence and field lines where generally visible on aerial photographs. This information is unchecked.



SCALE 1:24,000

1000 0 1000 2000 3000 4000 5000 6000 7000 FEET

1 0 1 2 3 4 5 6 7 8 9 10 KILOMETER

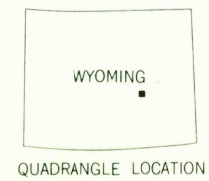
CONTOUR INTERVAL 20 FEET

DATUM IS MEAN SEA LEVEL

THIS MAP COMPLES WITH NATIONAL MAP ACCURACY STANDARDS

FOR SALE BY U.S. GEOLOGICAL SURVEY, DENVER 25, COLORADO OR WASHINGTON 25, D. C.

A FOLDER DESCRIBING TOPOGRAPHIC MAPS AND SYMBOLS IS AVAILABLE ON REQUEST



ROAD CLASSIFICATION

Heavy-duty ——— Light-duty ———

Medium-duty ——— Unimproved dirt ———

Interstate Route U.S. Route State Route

CASPER, WYO.

N4245-W10615/7.5

1961

AMS 4769 IV SE-SERIES V874

RETURN TO:
USGS AND HISTORICAL MAP ARCHIVES

2005

APR 26 1965