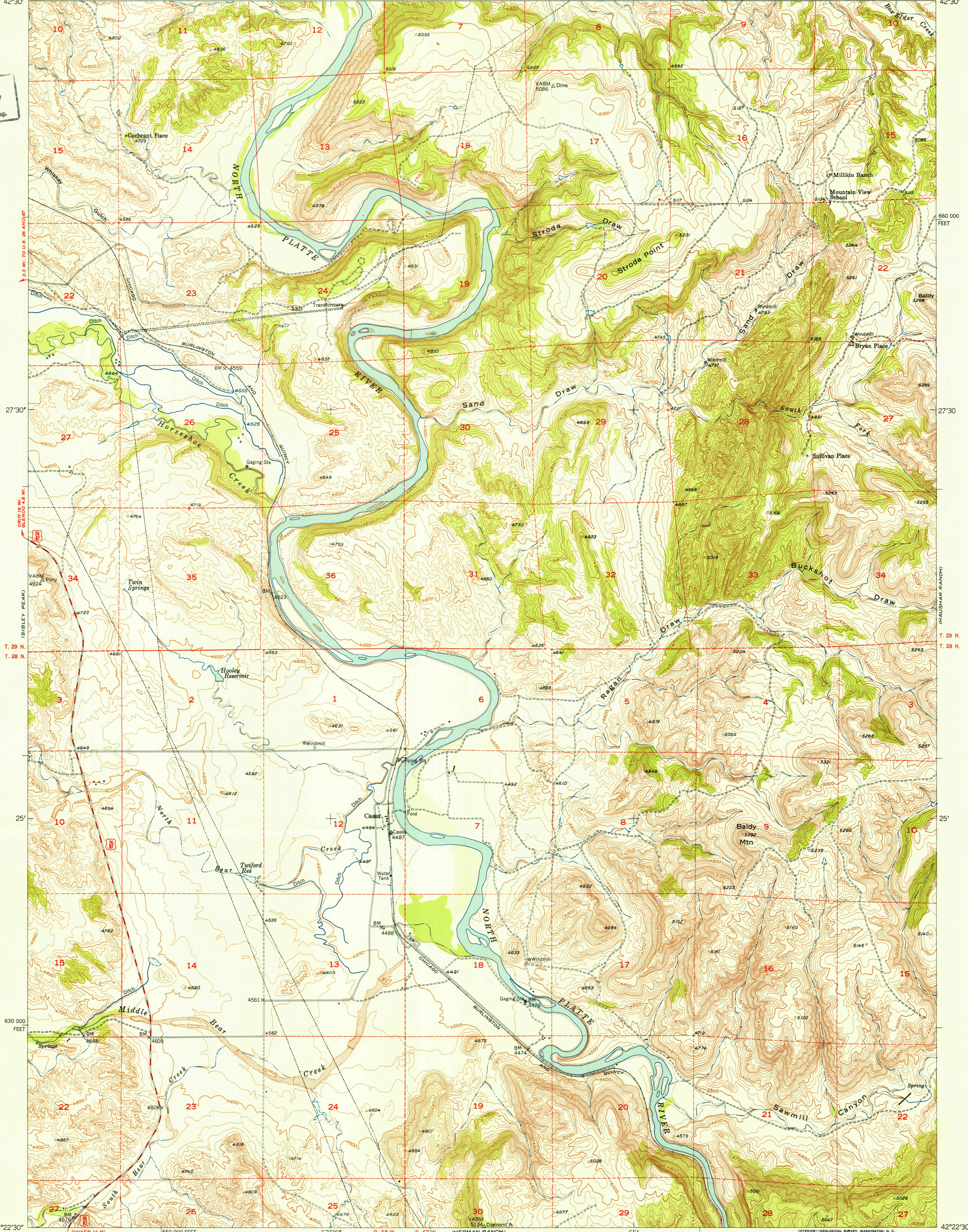


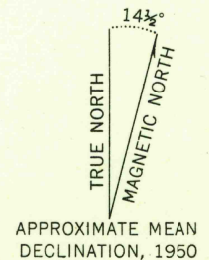
105°00' 57°30' R. 68 W. R. 67 W. (JEWEL SPRINGS) 55' 570 000 FEET 7.8 MI. TO U.S. 26 AND 87 104°52'30" 42°30'

U. S. G. S.
FILE COPY
Inspection and Editing.

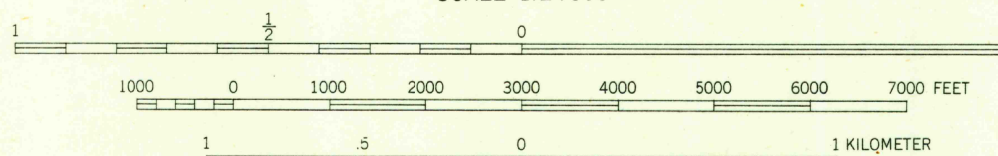


Mapped, edited and published by the Geological Survey as part of the Department of the Interior program for the development of the Missouri River Basin

Control by USGS and USC&GS
Topography from aerial photographs by multiplex methods
Aerial photographs taken 1947. Field check, 1950
Polyconic projection, 1927 North American datum
10,000-foot grid based on Wyoming coordinate system, east zone
Dashed land lines indicate approximate location



APPROXIMATE MEAN DECLINATION, 1950



CONTOUR INTERVAL 20 FEET
DATUM IS MEAN SEA LEVEL

THIS MAP COMPLIES WITH NATIONAL MAP ACCURACY STANDARDS
FOR SALE BY U. S. GEOLOGICAL SURVEY, FEDERAL CENTER, DENVER, COLORADO OR WASHINGTON 25, D. C.
A FOLDER DESCRIBING TOPOGRAPHIC MAPS AND SYMBOLS IS AVAILABLE ON REQUEST

ROAD CLASSIFICATION

Heavy-duty	4 LANE 12 LANE	Light-duty	2 LANE 4 LANE
Medium-duty	4 LANE 12 LANE	Unimproved dirt	-----
U. S. Route	⊠	State Route	○

U. S. G. S.
FILE COPY
Inspection and Editing.

CASSA, WYO.
N4225-W10452.5/7.5
EDITION OF 1952

RETURN TO:
USGS HISTORICAL MAP ARCHIVES