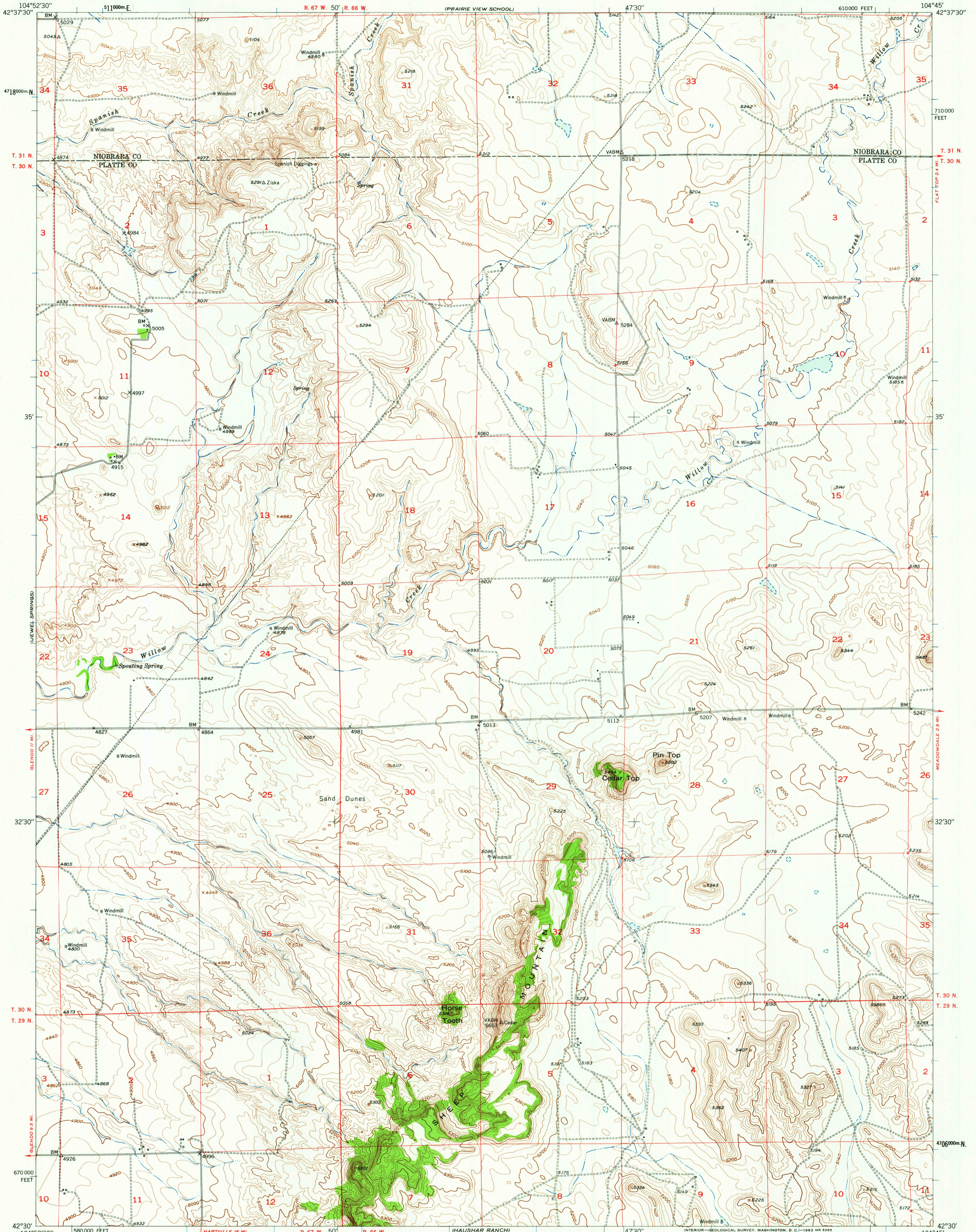


UNITED STATES
DEPARTMENT OF THE INTERIOR
GEOLOGICAL SURVEY

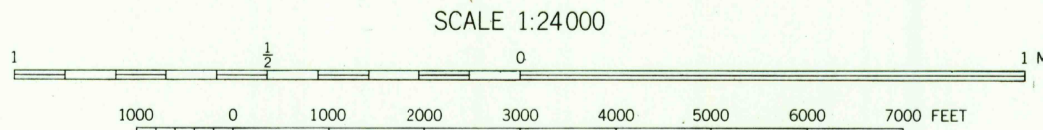
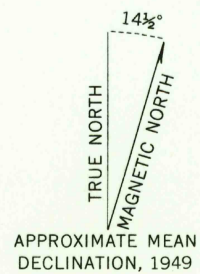
CEDAR TOP QUADRANGLE
WYOMING
7.5 MINUTE SERIES (TOPOGRAPHIC)



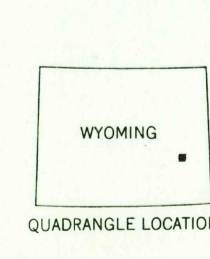
Mapped, edited, and published by the Geological Survey as part of the Department of the Interior program for the development of the Missouri River Basin

Control by USGS and USC&GS
Topography from aerial photographs by multiplex methods
Aerial photographs taken June 1947. Field check 1949
Polyconic projection. 1927 North American datum
10,000-foot grid based on Wyoming coordinate system, east zone

Unchecked elevations are shown in brown
1000-meter Universal Transverse Mercator grid ticks, zone 13, shown in blue



CONTOUR INTERVAL 20 FEET
DATUM IS MEAN SEA LEVEL



ROAD CLASSIFICATION
Light-duty ——— Unimproved dirt - - - - -

CEDAR TOP, WYO.
N4230-W10445/7.5

THIS MAP COMPLIES WITH NATIONAL MAP ACCURACY STANDARDS
FOR SALE BY U. S. GEOLOGICAL SURVEY, DENVER 25, COLORADO OR WASHINGTON 25, D. C.
A FOLDER DESCRIBING TOPOGRAPHIC MAPS AND SYMBOLS IS AVAILABLE ON REQUEST

RETURN TO:
USGS AND HISTORICAL MAP ARCHIVES
APR 24 1963