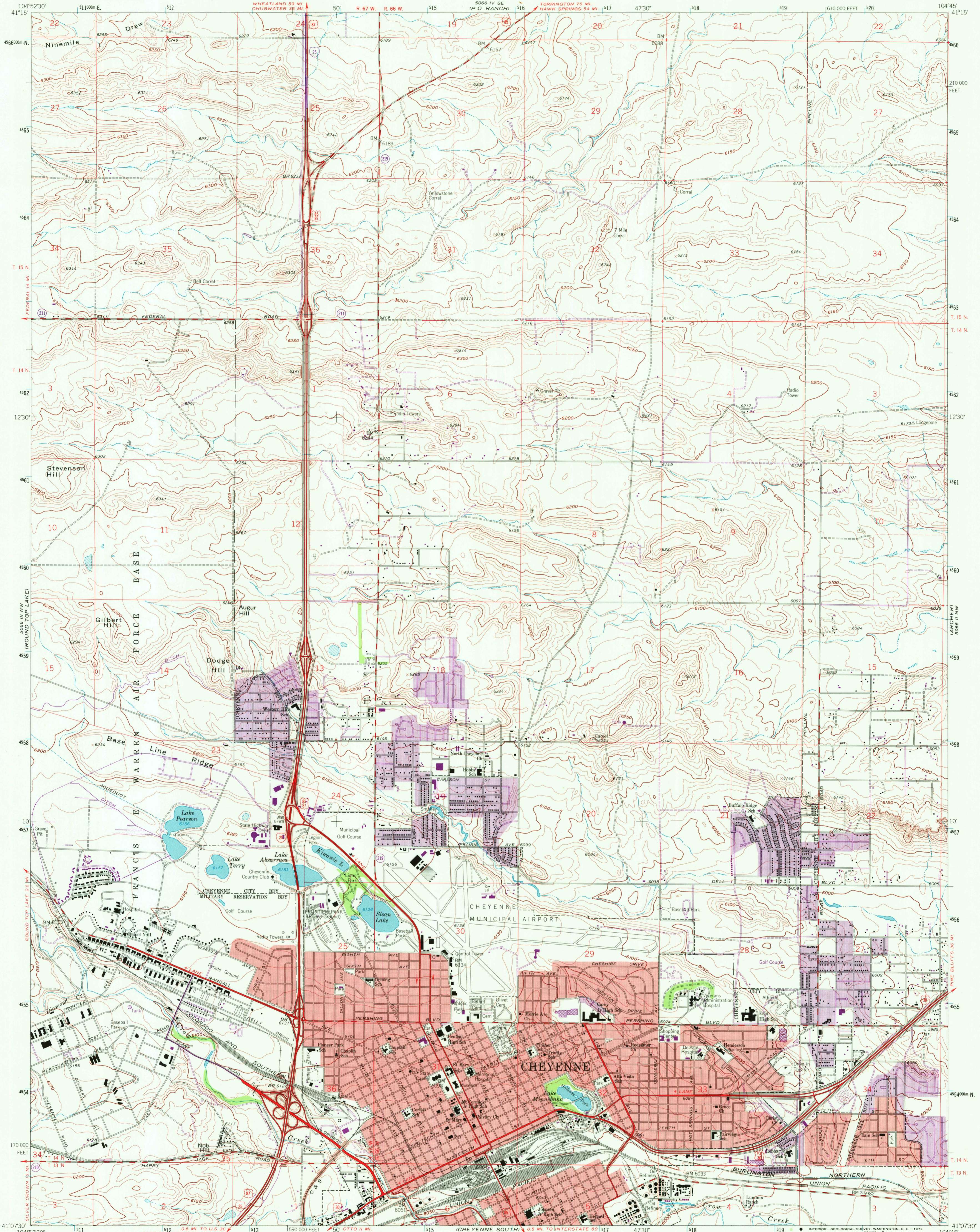


UNITED STATES  
DEPARTMENT OF THE INTERIOR  
GEOLOGICAL SURVEY

CHEYENNE NORTH QUADRANGLE  
WYOMING-LARAMIE CO.  
7.5 MINUTE SERIES (TOPOGRAPHIC)  
NE/4 CHEYENNE 15 QUADRANGLE



Mapped, edited, and published by the Geological Survey

Control by USGS and USC&GS

Planimetry by photogrammetric methods from aerial photographs taken 1960. Topography by planetable surveys 1948. Revised 1961

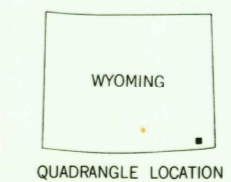
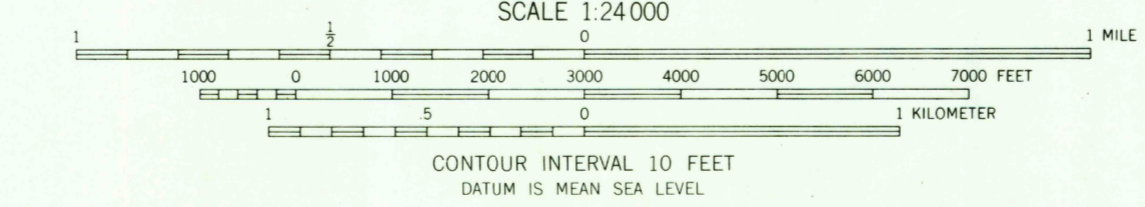
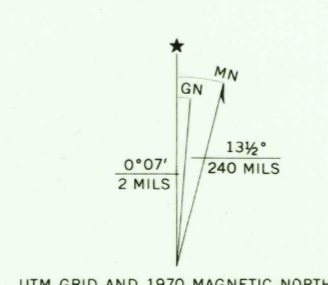
Polyconic projection. 1927 North American datum  
10,000-foot grid based on Wyoming coordinate system, east zone  
1000-meter Universal Transverse Mercator grid ticks, zone 13, shown in blue

Fine red dashed lines indicate selected fence lines

Red tint indicates areas in which only landmark buildings are shown

Revisions shown in purple compiled from aerial photographs taken 1970. This information not field checked

Purple tint indicates extension of urban areas



ROAD CLASSIFICATION

Heavy-duty	Light-duty
Medium-duty	Unimproved dirt
Interstate Route	U.S. Route
State Route	

THIS MAP COMPLIES WITH NATIONAL MAP ACCURACY STANDARDS  
FOR SALE BY U.S. GEOLOGICAL SURVEY, DENVER, COLORADO 80225, OR WASHINGTON, D.C. 20242  
A FOLDER DESCRIBING TOPOGRAPHIC MAPS AND SYMBOLS IS AVAILABLE ON REQUEST

USGS  
HISTORICAL FILE  
TOPOGRAPHIC DIVISION

CHEYENNE NORTH, WYO.  
NE/4 CHEYENNE 15 QUADRANGLE  
N4107.5-W10445.7.5  
1961  
PHOTOREVISED 1970  
AMS 5066 III NE-SERIES V874

2590

NOV 9 1972

RETURN TO:  
USGS HISTORICAL MAP ARCHIVES