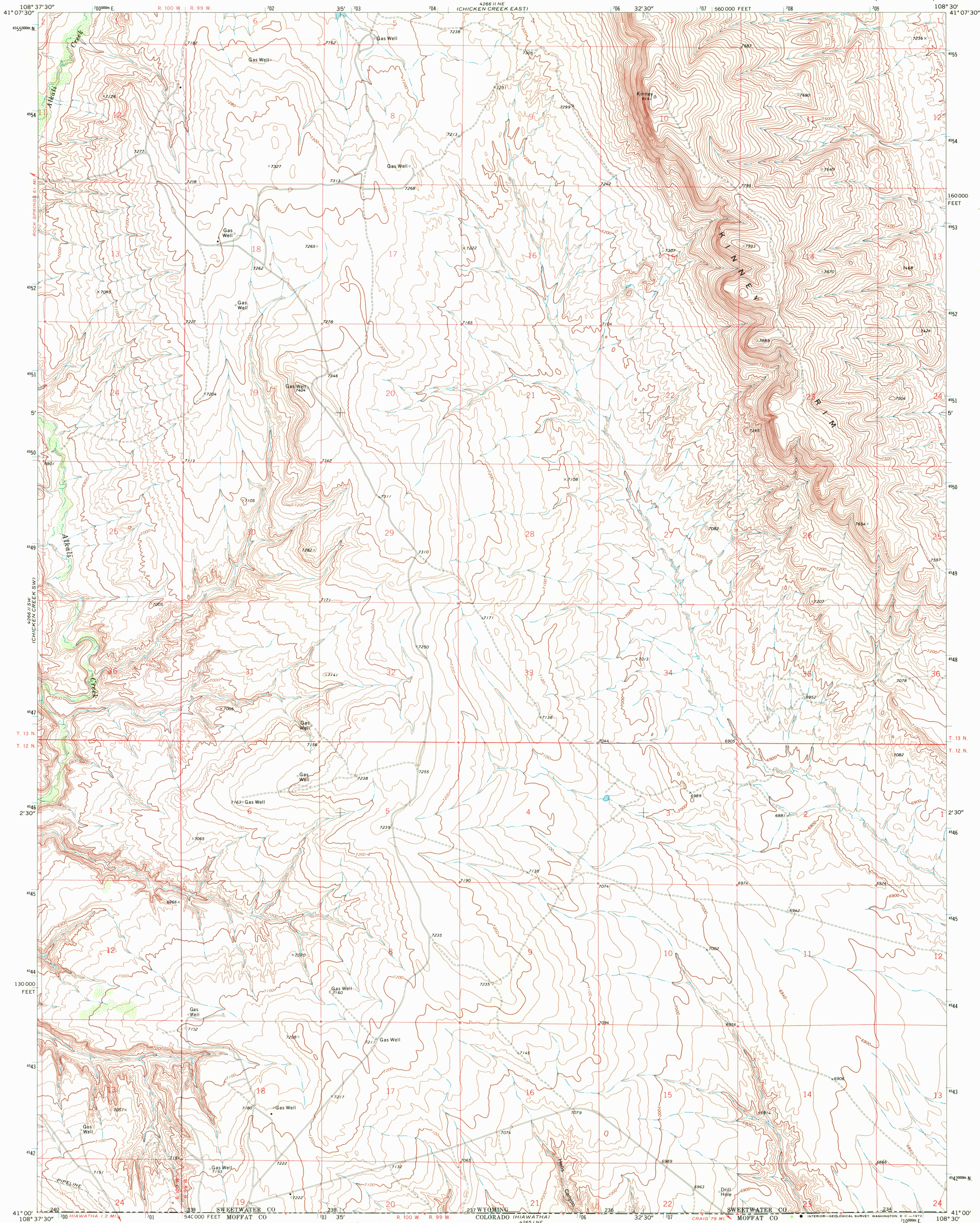
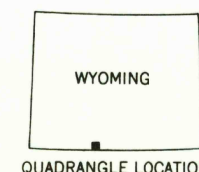
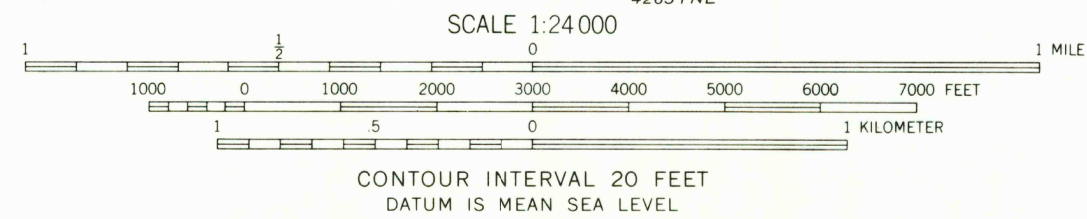
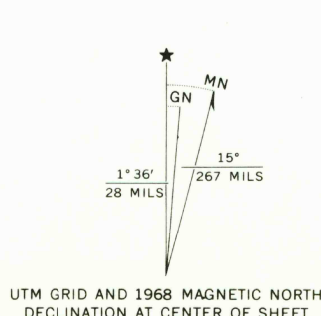


UNITED STATES
DEPARTMENT OF THE INTERIOR
GEOLOGICAL SURVEY

CHICKEN CREEK SE QUADRANGLE
WYOMING-COLORADO
7.5 MINUTE SERIES (TOPOGRAPHIC)



Mapped, edited, and published by the Geological Survey
Control by USGS and USC&GS
Topography by photogrammetric methods from aerial
photographs taken 1967. Field checked 1968
Polyconic projection. 1927 North American datum
10,000-foot grid based on Wyoming coordinate system,
west central zone
1000-meter Universal Transverse Mercator grid ticks,
zone 12, shown in blue



ROAD CLASSIFICATION
Light-duty road, all weather. Unimproved road, fair or dry
improved surface weather

CHICKEN CREEK SE, WYO.-COLO.
N4100-W10830/7.5

1968

AMS 4266 II SE-SERIES V874

RETURN TO:
USGS AND HISTORICAL MAP ARCHIVES

JAN 6 1972
3760