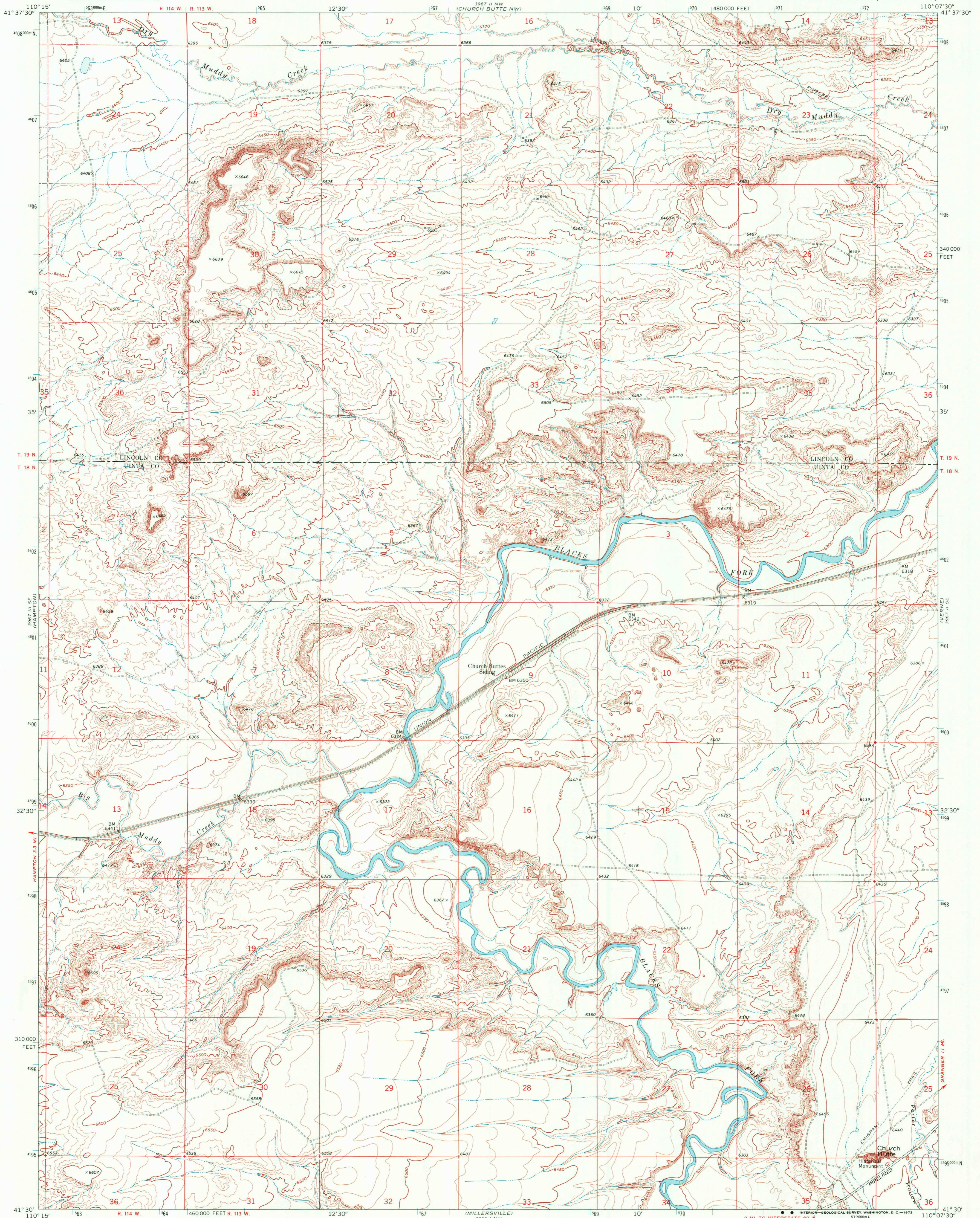
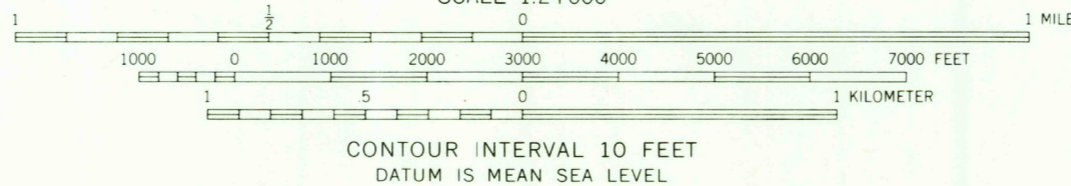
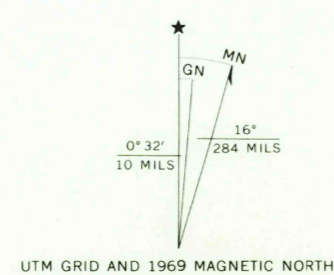


UNITED STATES  
DEPARTMENT OF THE INTERIOR  
GEOLOGICAL SURVEY

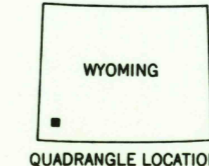
CHURCH BUTTE QUADRANGLE  
WYOMING  
7.5 MINUTE SERIES (TOPOGRAPHIC)



Mapped, edited, and published by the Geological Survey  
Control by USGS and USC&GS  
Topography by photogrammetric methods from aerial photographs taken 1968. Field checked 1969  
Polyconic projection. 1927 North American datum  
10,000-foot grid based on Wyoming coordinate system,  
west zone  
1000-meter Universal Transverse Mercator grid ticks,  
zone 12, shown in blue



CONTOUR INTERVAL 10 FEET  
DATUM IS MEAN SEA LEVEL



ROAD CLASSIFICATION  
Primary highway, hard surface  
Secondary highway, hard surface  
Light-duty road, hard or improved surface  
Unimproved road  
Interstate Route  
U. S. Route  
State Route

THIS MAP COMPLIES WITH NATIONAL MAP ACCURACY STANDARDS  
FOR SALE BY U. S. GEOLOGICAL SURVEY, DENVER, COLORADO 80225, OR WASHINGTON, D. C. 20242  
A FOLDER DESCRIBING TOPOGRAPHIC MAPS AND SYMBOLS IS AVAILABLE ON REQUEST

CHURCH BUTTE, WYO.  
N4130-W11007.5/7.5

1969  
AMS 3967 II SW—SERIES V874

USGS  
HISTORICAL FILE  
TOPOGRAPHIC DIVISION

2795  
SEP 25 1972

USGS AND HISTORICAL MAP ARCHIVES