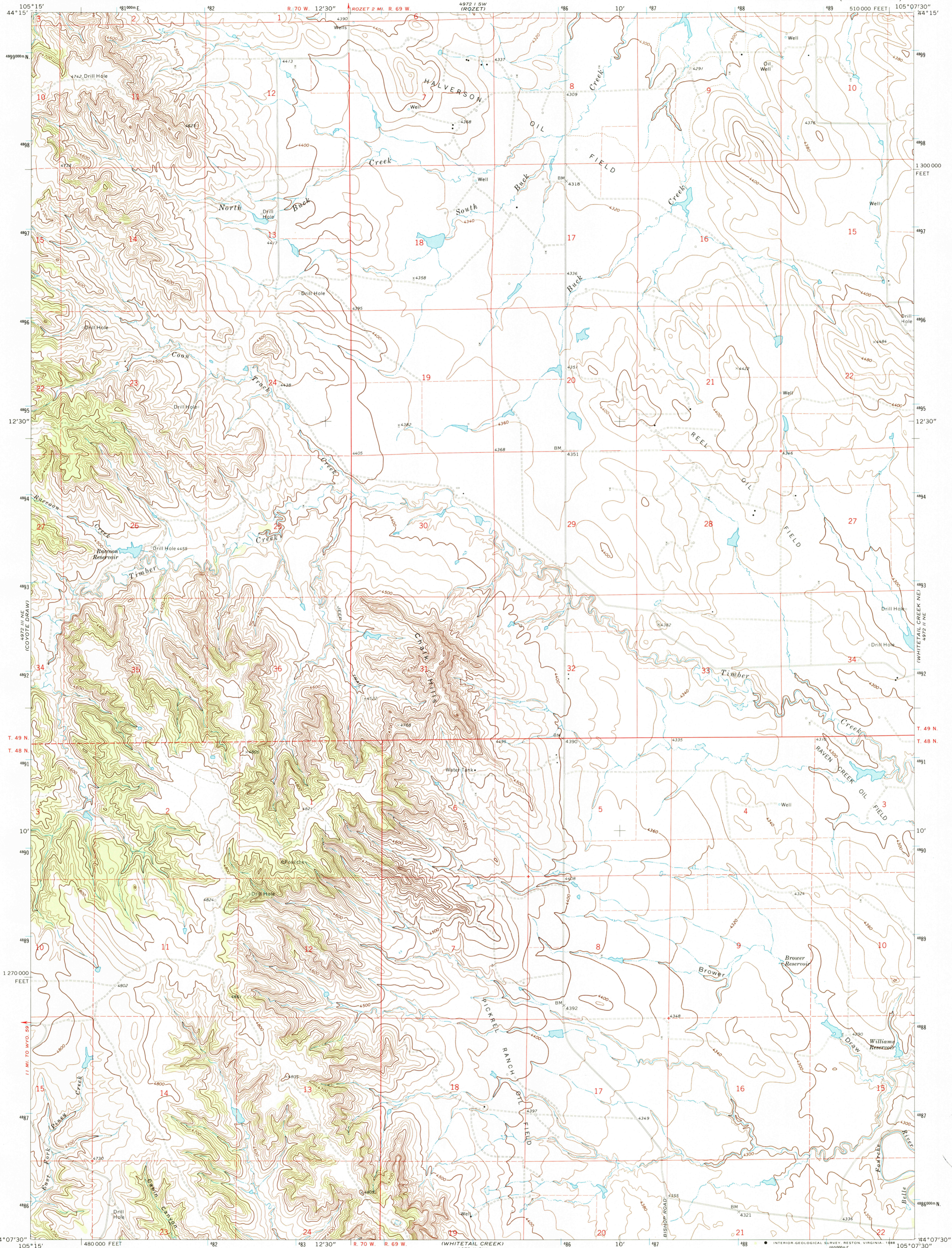
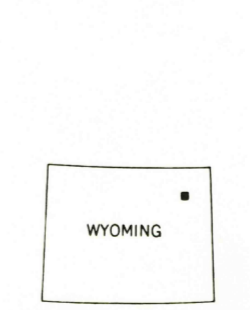
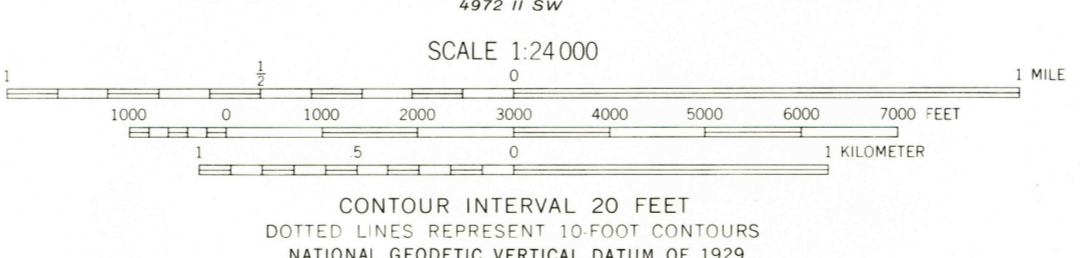
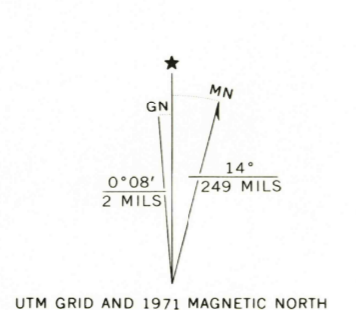


UNITED STATES
DEPARTMENT OF THE INTERIOR
GEOLOGICAL SURVEY

COON TRACK CREEK QUADRANGLE
WYOMING—CAMPBELL CO.
7.5 MINUTE SERIES (TOPOGRAPHIC)



Maped, and published by the Geological Survey
Control by USGS and USC&GS
Topography by photogrammetric methods from aerial photographs taken 1970. Field checked 1971
Projection and 10,000-foot grid ticks: Wyoming coordinate system, east zone (transverse Mercator) 1000-meter Universal Transverse Mercator grid ticks, zone 13, shown in blue. 1927 North American Datum
Fine red dashed lines indicate selected fence lines
To place on the predicted North American Datum 1983 move the projection lines 7 meters north and 46 meters east as shown by dashed corner ticks



ROAD CLASSIFICATION

Primary highway, hard surface ——— Light-duty road, hard or improved surface ———

Secondary highway, hard surface ——— Unimproved road ———

○ Interstate Route ○ U. S. Route ○ State Route

COON TRACK CREEK, WYO.
44105-B2-TF-024

1971
DMA 4972 II NW-SERIES V874

USGS NHD HISTORICAL MAP
AUG 02 1988
REC'D FILE COPY