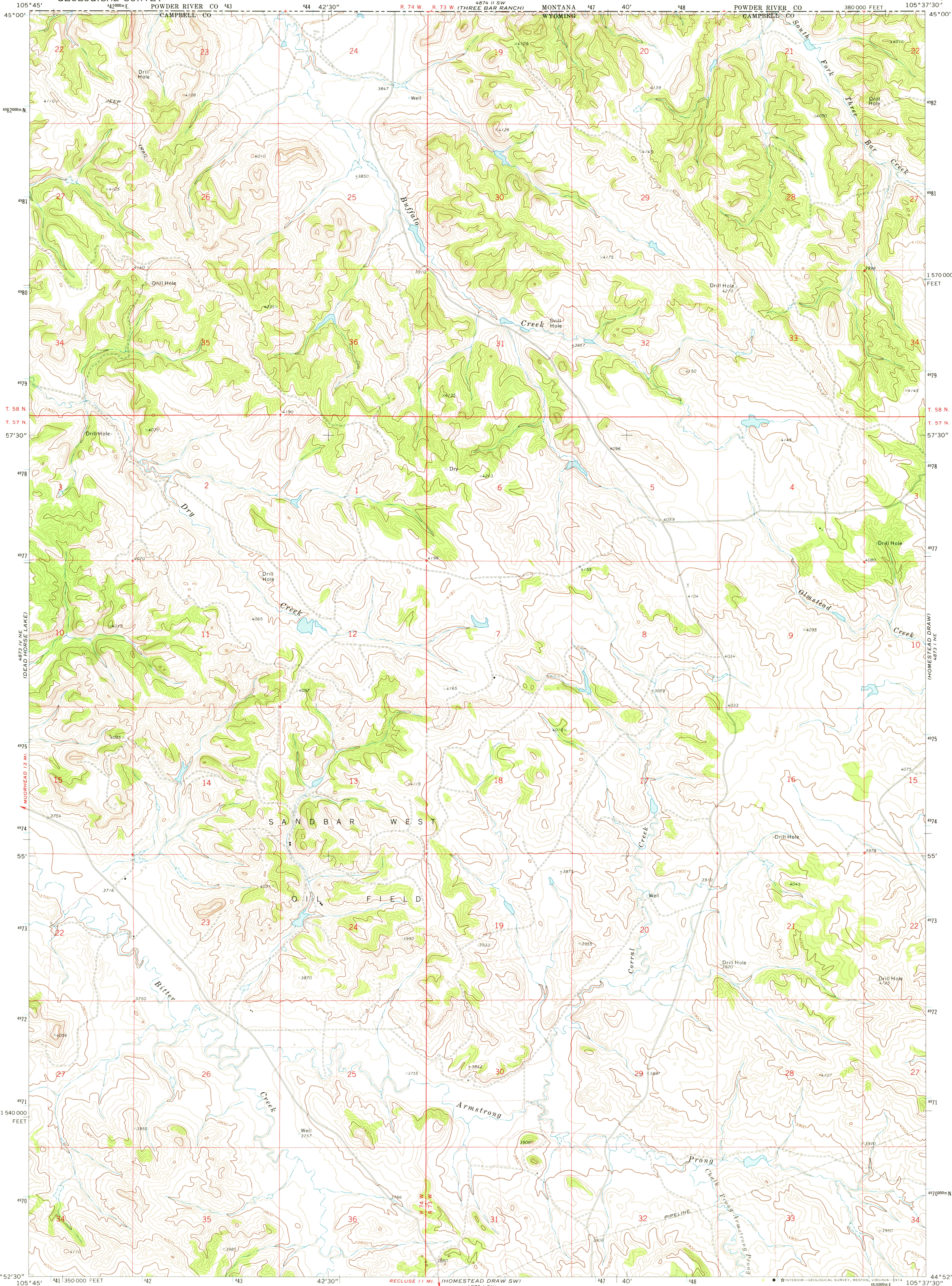
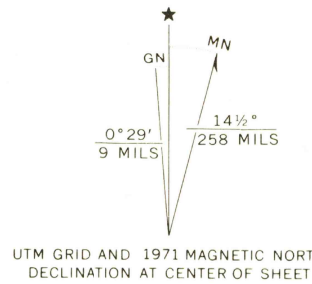


UNITED STATES
DEPARTMENT OF THE INTERIOR
GEOLOGICAL SURVEY

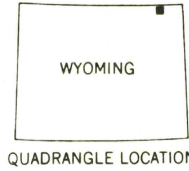
CORRAL CREEK QUADRANGLE
WYOMING—CAMPBELL CO.
7.5 MINUTE SERIES (TOPOGRAPHIC)



Mapped, edited, and published by the Geological Survey
Control by USGS and USC&GS
Topography by photogrammetric methods from aerial
photographs taken 1970. Field checked 1971
Projection and 10,000-foot grid ticks: Wyoming
coordinate system, east zone (transverse Mercator)
1000-meter Universal Transverse Mercator grid ticks,
zone 13, shown in blue. 1927 North American datum
Fine red dashed lines indicate selected fence lines



SCALE 1:24 000
1 000 000 0 1000 2000 3000 4000 5000 6000 7000 FEET
1 0 1 2 3 4 5 6 7 8 9 10 KILOMETER
CONTOUR INTERVAL 20 FEET
NATIONAL GEODETIC VERTICAL DATUM OF 1929



ROAD CLASSIFICATION
Primary highway, Light-duty road, hard or
hard surface improved surface
Secondary highway, Unimproved road
hard surface
Interstate Route U.S. Route State Route

CORRAL CREEK, WYO.
N4452.5—W10537.5/7.5

1971

AMS 4873 I NW—SERIES V874