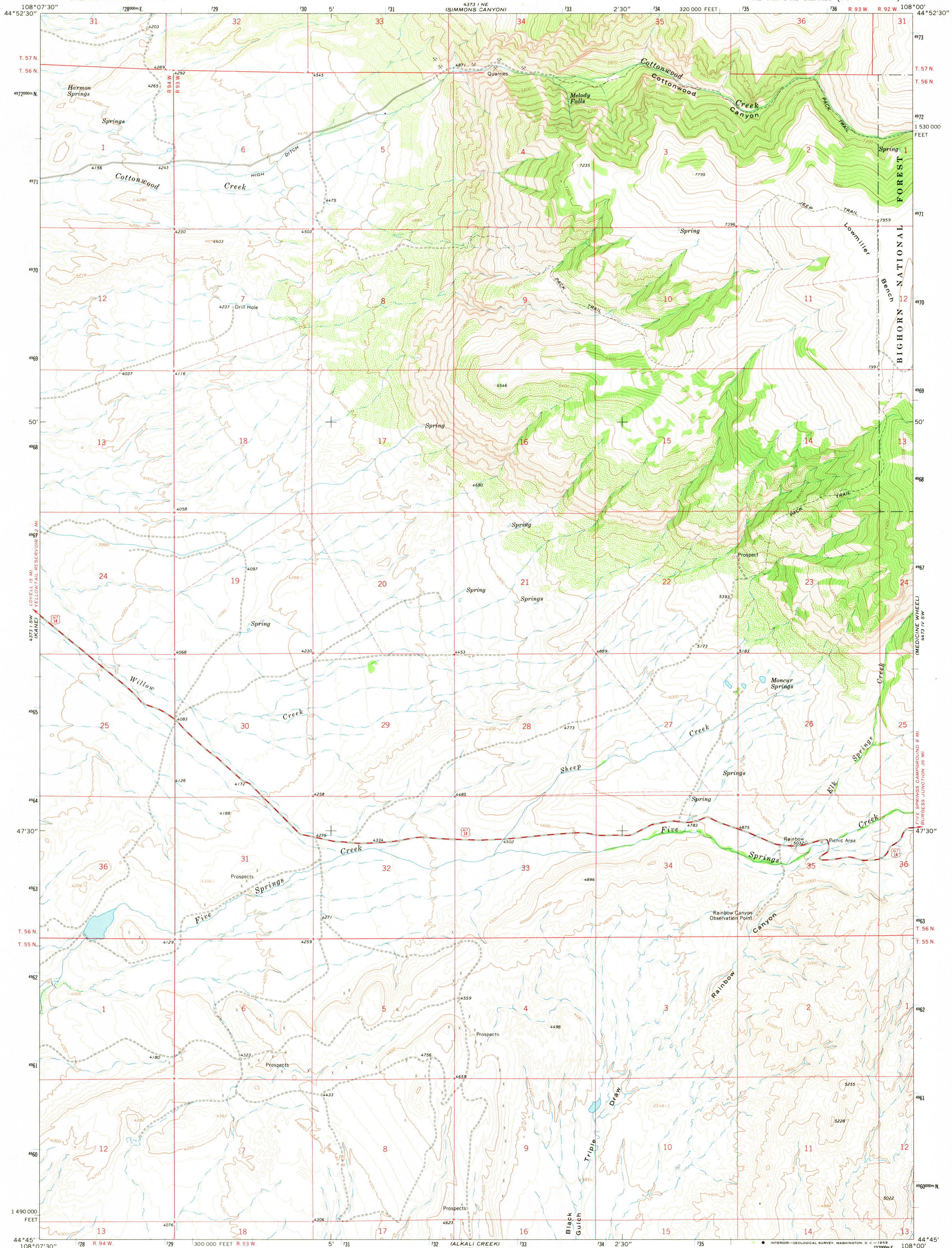
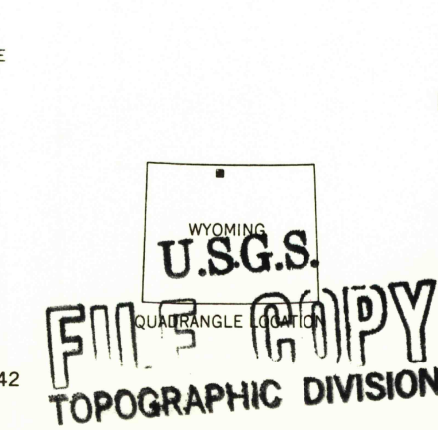
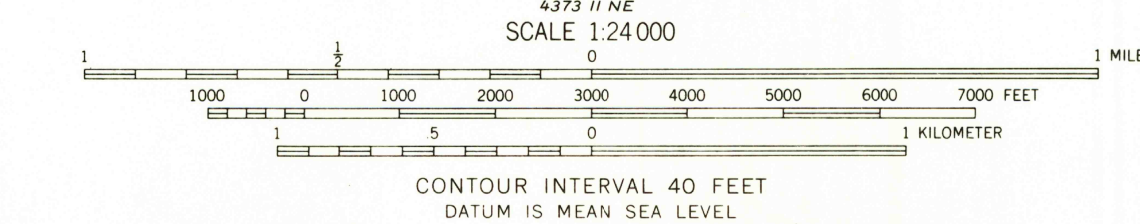
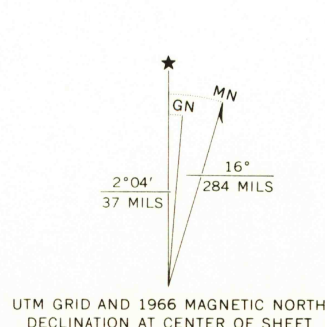


UNITED STATES
DEPARTMENT OF THE INTERIOR
GEOLOGICAL SURVEY

COTTONWOOD CANYON QUADRANGLE
WYOMING—BIG HORN CO.
7.5 MINUTE SERIES (TOPOGRAPHIC)



Mapped, edited, and published by the Geological Survey
Control by USGS and USC&GS
Topography by photogrammetric methods from aerial
photographs taken 1964. Field checked 1966
Polyconic projection. 1927 North American datum
10,000-foot grid based on Wyoming coordinate system,
east central zone
1000-meter Universal Transverse Mercator grid ticks,
zone 12, shown in blue
Fine red dashed lines indicate selected fence lines
Where omitted, land lines have not been established



ROAD CLASSIFICATION
Medium-duty — Light-duty
Unimproved dirt —
U.S. Route

COTTONWOOD CANYON, WYO.
N4445—W10800/7.5
1966
AMS 4373 1 SE—SERIES V874

RETURN TO:
USGS AND HISTORICAL MAP ARCHIVES