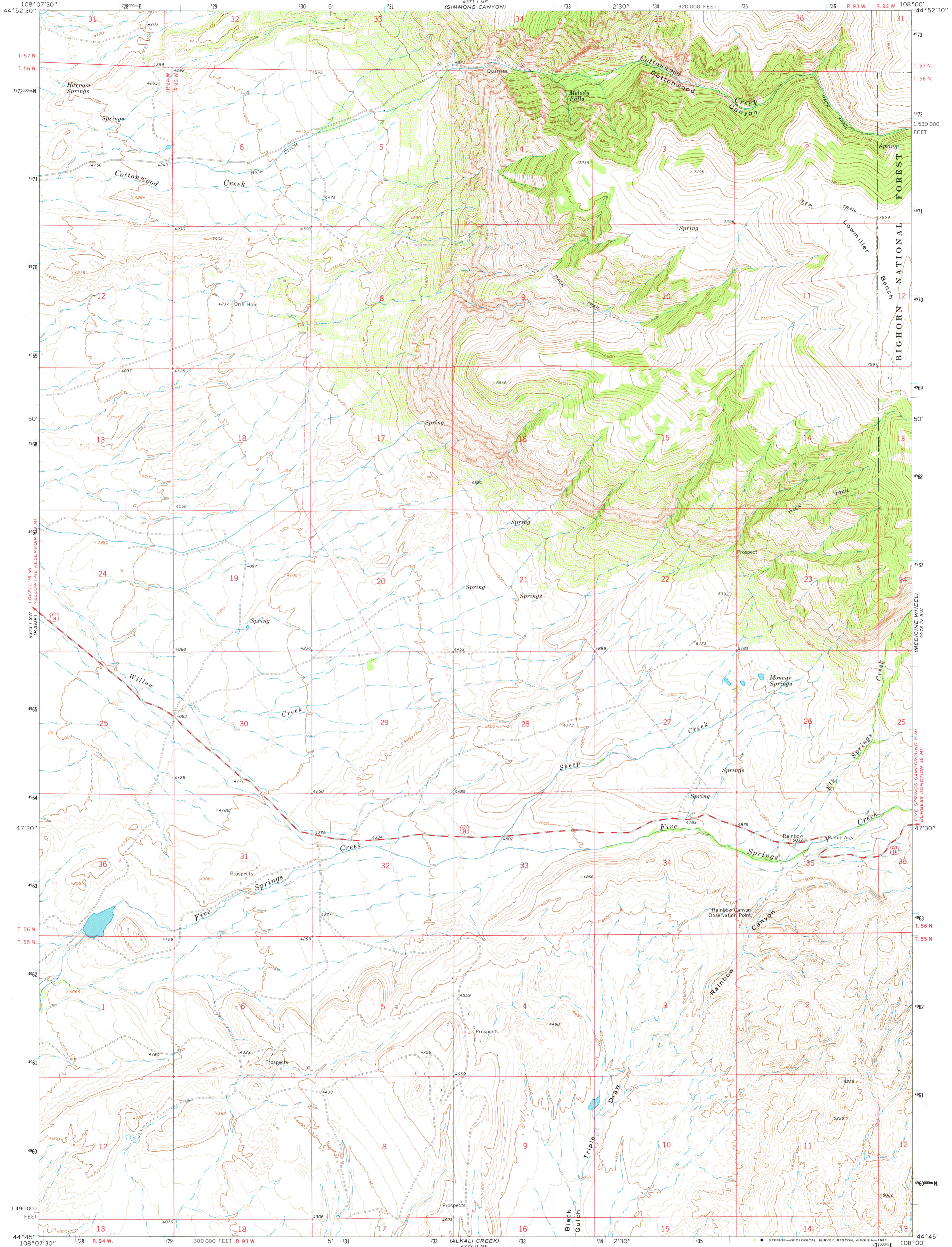


UNITED STATES
DEPARTMENT OF THE INTERIOR
GEOLOGICAL SURVEY

COTTONWOOD CANYON QUADRANGLE
WYOMING—BIG HORN CO.
7.5 MINUTE SERIES (TOPOGRAPHIC)



Mapped, edited, and published by the Geological Survey

Control by USGS and USC&GS

Topography by photogrammetric methods from aerial photographs taken 1964. Field checked 1966

Polyconic projection. 1927 North American datum

10,000-foot grid based on Wyoming coordinate system, east central zone

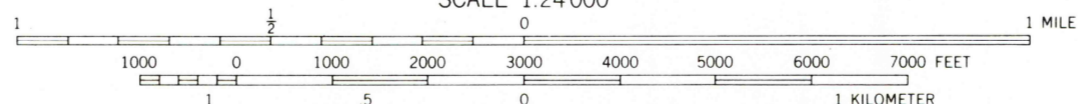
1000-meter Universal Transverse Mercator grid ticks, zone 12, shown in blue

Fine red dashed lines indicate selected fence lines

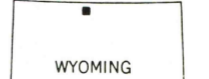
Where omitted, land lines have not been established

To place on the predicted North American Datum 1983 move the projection lines 8 meters north and 52 meters east as shown by dashed corner ticks

There may be private inholdings within the boundaries of the National or State reservations shown on this map



CONTOUR INTERVAL 40 FEET
NATIONAL GEODETIC VERTICAL DATUM OF 1929



ROAD CLASSIFICATION

Medium-duty	Light duty
Unimproved dirt	U.S. Route

THIS MAP COMPLIES WITH NATIONAL MAP ACCURACY STANDARDS
FOR SALE BY U. S. GEOLOGICAL SURVEY, DENVER, COLORADO 80225, OR RESTON, VIRGINIA 22092
A FOLDER DESCRIBING TOPOGRAPHIC MAPS AND SYMBOLS IS AVAILABLE ON REQUEST

Map photoinspected 1978
No major culture or drainage changes observed

COTTONWOOD CANYON, WYO.
N4445-W10800/7.5

1966
PHOTOINSPECTED 1978
DMA 4373 I SE—SERIES V874

APR 23 1982

200

RETURN TO:
USGS AND HISTORICAL MAP ARCHIVES