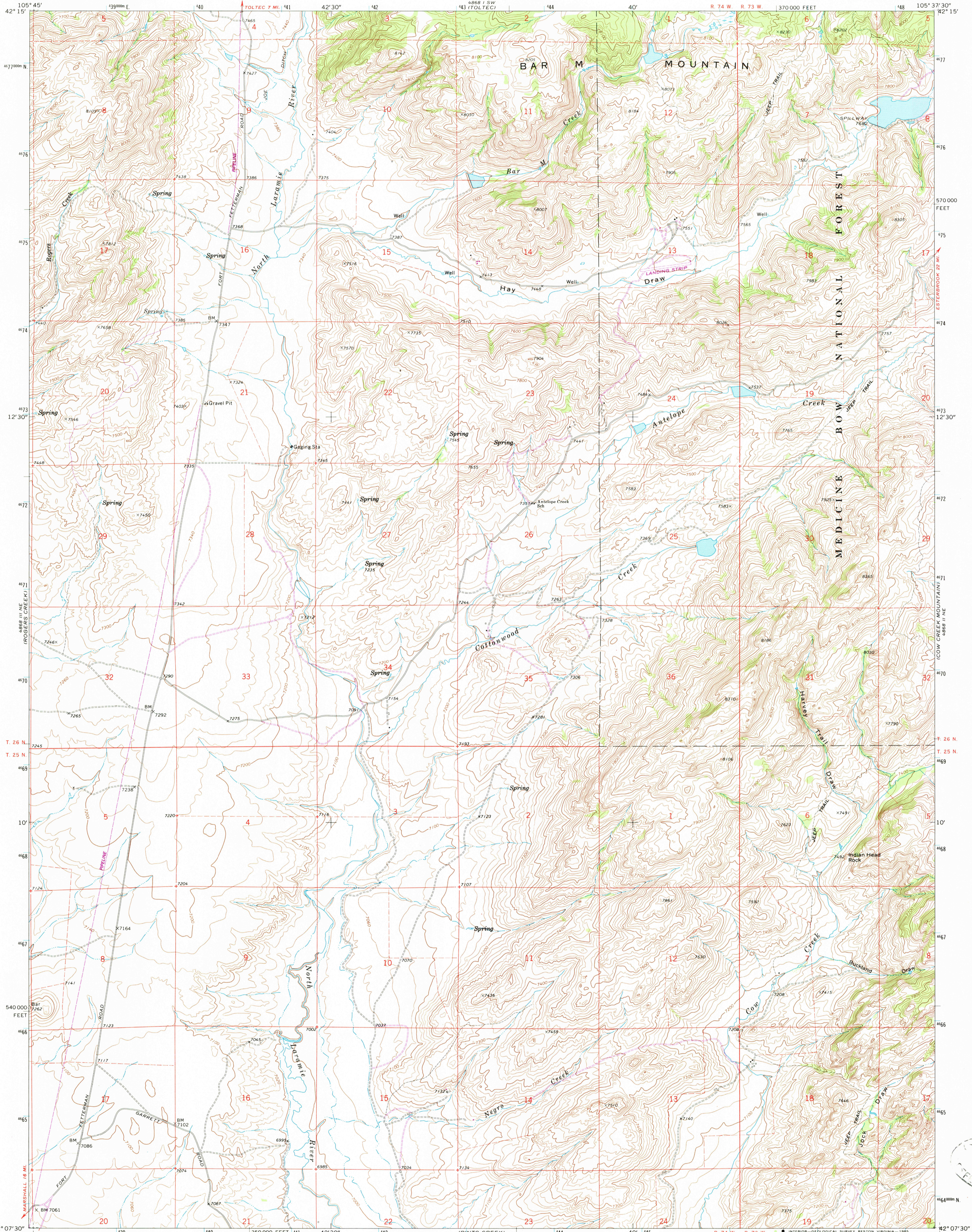
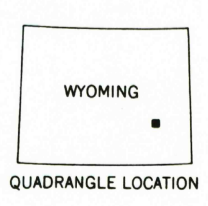
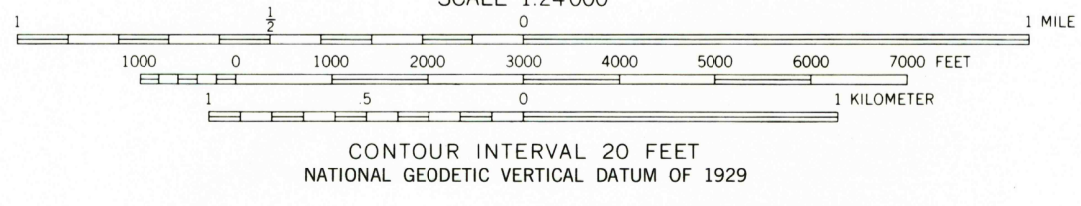
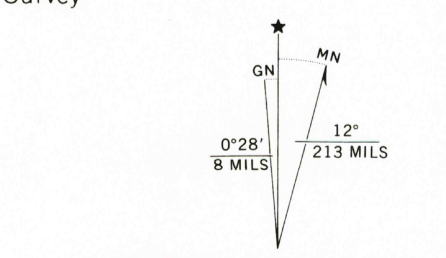


UNITED STATES  
DEPARTMENT OF THE INTERIOR  
GEOLOGICAL SURVEY

COTTONWOOD CREEK QUADRANGLE  
WYOMING—ALBANY CO.  
7.5 MINUTE SERIES (TOPOGRAPHIC)



**ROCK RIVER 37 MI.**  
Mapped, edited, and published by the Geological Survey  
Control by USGS and NOS/NOAA  
Topography by photogrammetric methods from aerial photographs taken 1967. Field checked 1968  
Polyconic projection. 1927 North American Datum  
10,000-foot grid based on Wyoming coordinate system, east zone  
1000-meter Universal Transverse Mercator grid ticks, zone 13, shown in blue  
Fine red dashed lines indicate selected fence lines  
To place on the predicted North American Datum 1983 move the projection lines 7 meters north and 48 meters east as shown by dashed corner ticks  
There may be private inholdings within the boundaries of the National or State reservations shown on this map



**ROAD CLASSIFICATION**  
Light-duty road, all weather      Unimproved road, fair or dry weather  
improved surface      weather

THIS MAP COMPLIES WITH NATIONAL MAP ACCURACY STANDARDS  
FOR SALE BY U. S. GEOLOGICAL SURVEY, DENVER, COLORADO 80225, OR RESTON, VIRGINIA 22092  
A FOLDER DESCRIBING TOPOGRAPHIC MAPS AND SYMBOLS IS AVAILABLE ON REQUEST

COTTONWOOD CREEK, WYO.  
42105-B6-TF-024  
1968  
PHOTOREVISED 1985  
DMA 4868 II NW—SERIES V874

US NMD RESERVE  
NOV 25 1985  
REFERENCE COLLECTION