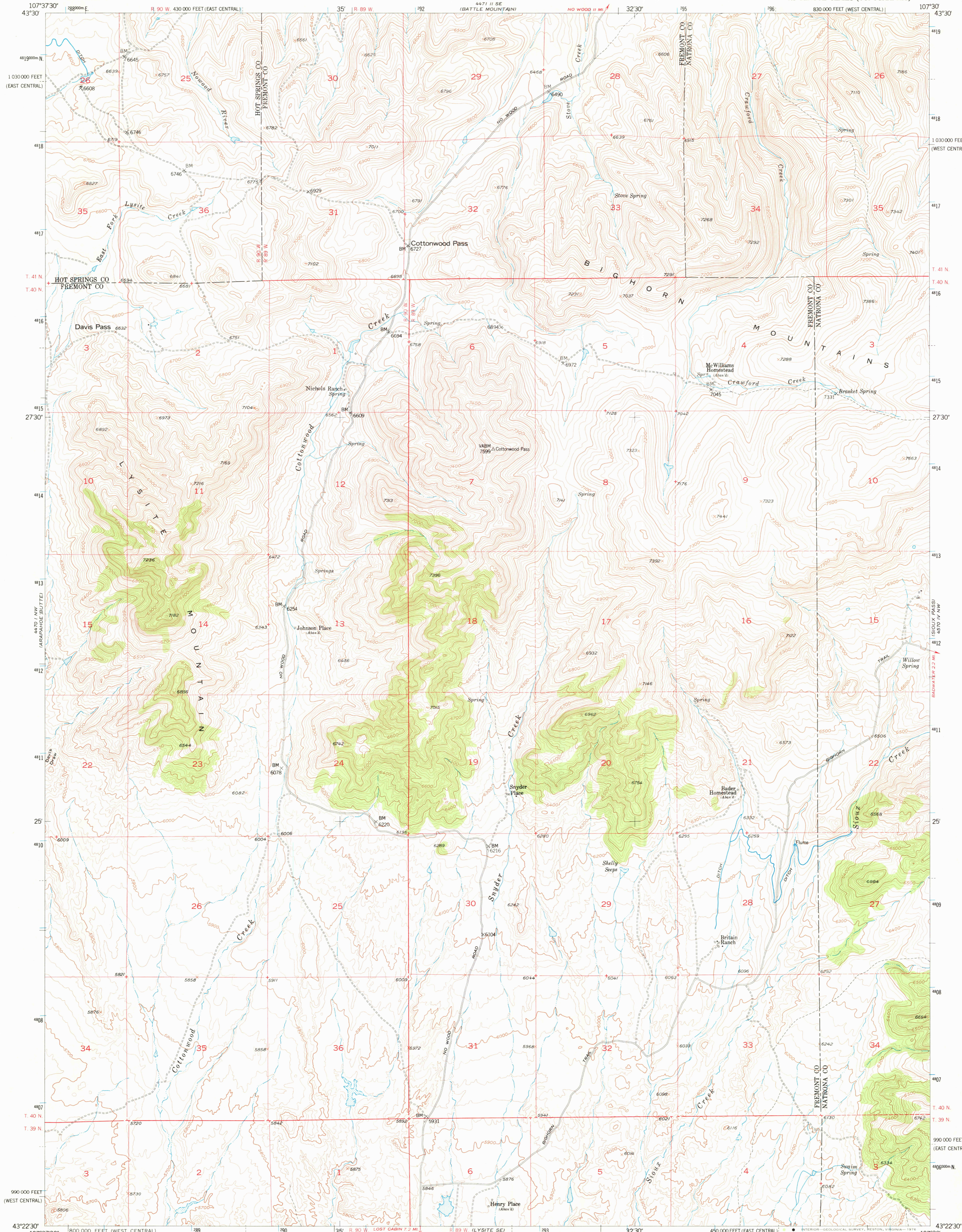
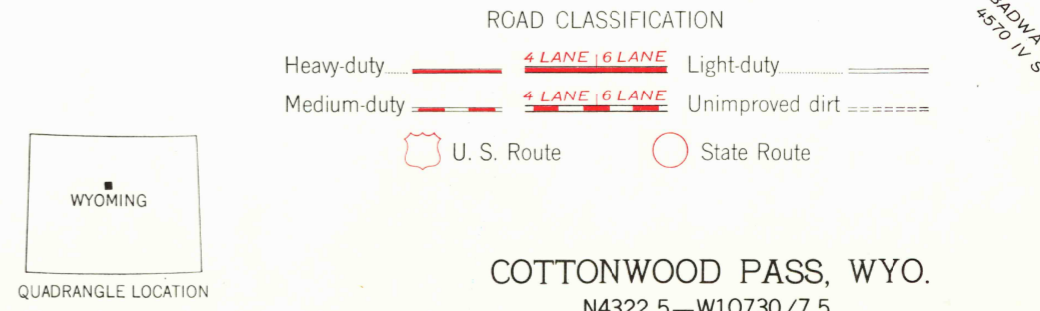
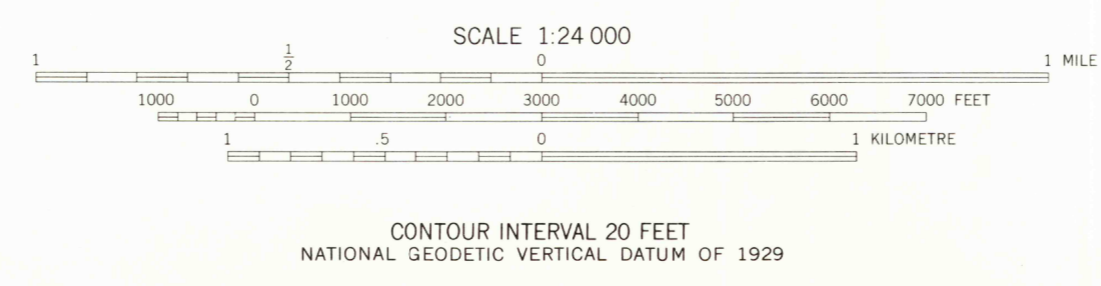
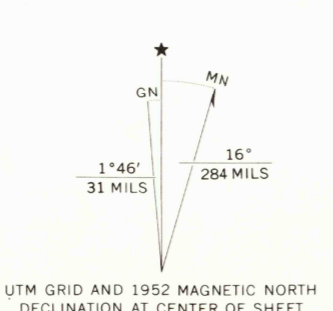


UNITED STATES  
DEPARTMENT OF THE INTERIOR  
GEOLOGICAL SURVEY

COTTONWOOD PASS QUADRANGLE  
WYOMING  
7.5 MINUTE SERIES (TOPOGRAPHIC)



Mapped, edited, and published by the Geological Survey as part of the Department of the Interior program for the development of the Missouri River Basin. Control by USGS and USC&GS. Topography from aerial photographs by multiplex methods. Aerial photographs taken 1949. Field check 1952. Polyconic projection. 1927 North American datum. 10,000-foot grid based on Wyoming coordinate system, west central and east central zones. Dashed land lines indicate approximate locations. 1000-metre Universal Transverse Mercator grid ticks, zone 13, shown in blue.



THIS MAP COMPLIES WITH NATIONAL MAP ACCURACY STANDARDS FOR SALE BY U.S. GEOLOGICAL SURVEY, DENVER, COLORADO 80225, OR RESTON, VIRGINIA 22092. A FOLDER DESCRIBING TOPOGRAPHIC MAPS AND SYMBOLS IS AVAILABLE ON REQUEST.

COTTONWOOD PASS, WYO.  
N4322.5—W10730/7.5  
1952  
AMS 4470 I NE—SERIES V874

RETURN TO:  
USGS AND HISTORICAL MAP ARCHIVES

DEC 20 1976

1300