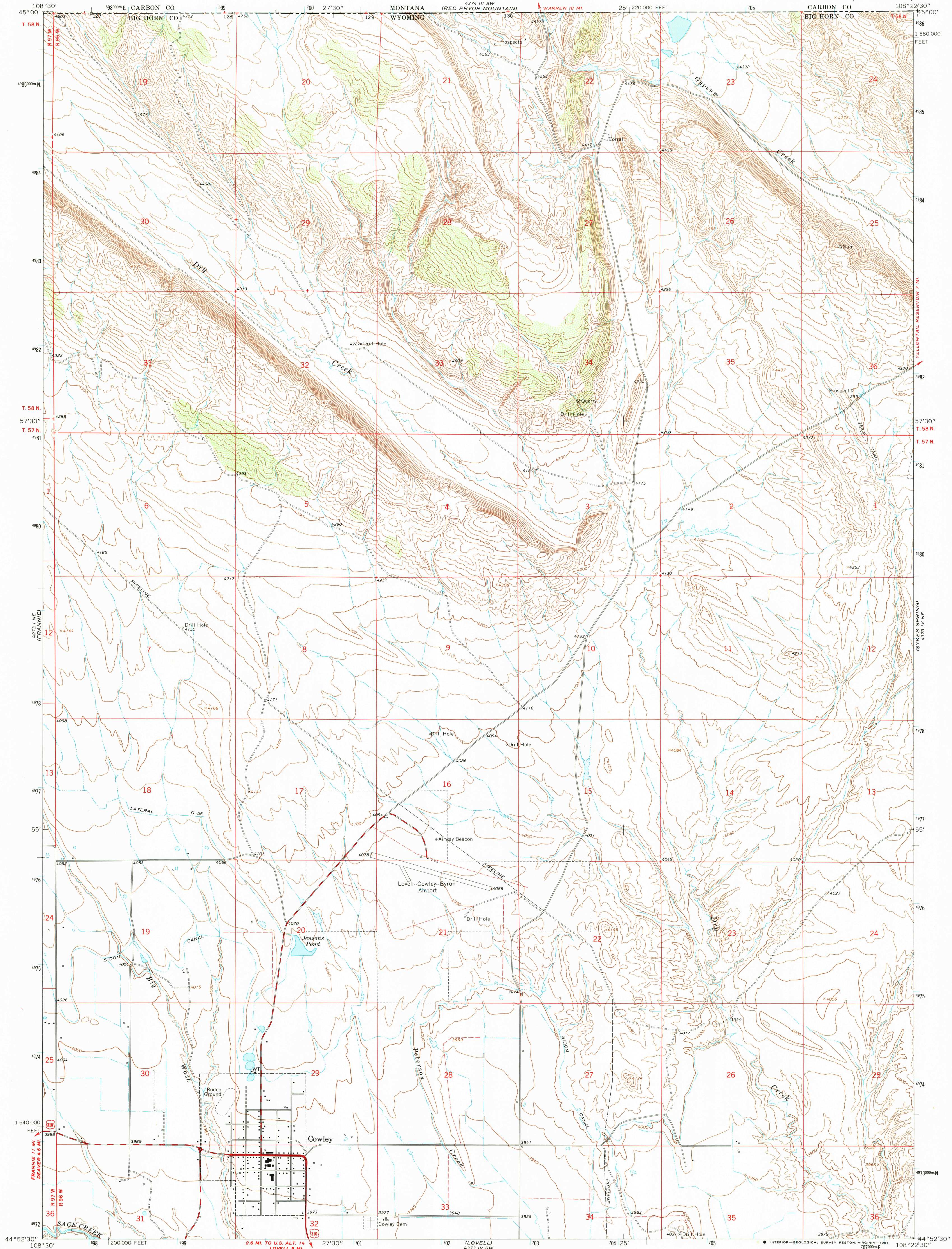
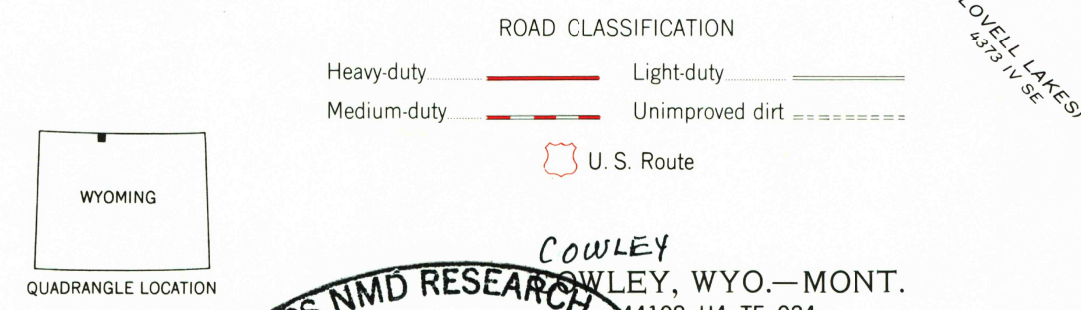
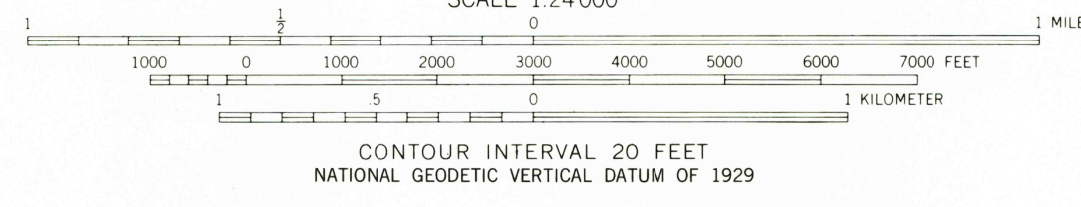
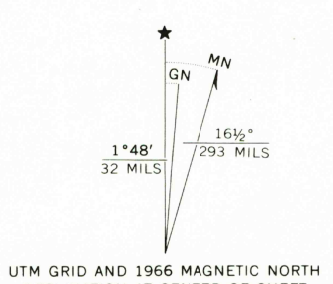


UNITED STATES  
DEPARTMENT OF THE INTERIOR  
GEOLOGICAL SURVEY

COWLEY QUADRANGLE  
WYOMING-MONTANA  
7.5 MINUTE SERIES (TOPOGRAPHIC)



Mapped, edited, and published by the Geological Survey  
Control by USGS and USC&GS  
Topography by photogrammetric methods from aerial  
photographs taken 1965. Field checked 1966  
Polyconic projection. 1927 North American Datum  
10,000-foot grid based on Wyoming coordinate system,  
east central zone  
1000-meter Universal Transverse Mercator grid ticks,  
zone 12, shown in blue  
Fine red dashed lines indicate selected fence lines  
To place on the predicted North American Datum 1983  
move the projection lines 9 meters north and  
53 meters east as shown by dashed corner ticks  
Map photoinspected 1978  
No major culture or drainage changes observed



THIS MAP COMPLIES WITH NATIONAL MAP ACCURACY STANDARDS.  
FOR SALE BY U. S. GEOLOGICAL SURVEY, DENVER, COLORADO 80225, OR RESTON, VIRGINIA 22092  
A FOLDER DESCRIBING TOPOGRAPHIC MAPS AND SYMBOLS IS AVAILABLE ON REQUEST

COWLEY  
WYOMING, WYO.-MONT.  
1966  
PHOTOINSPECTED 1978  
4373 IV NW-SERIES V874  
USGS NMD RESEARCH  
OCT 25 1985  
REFERENCE COLLECTION