

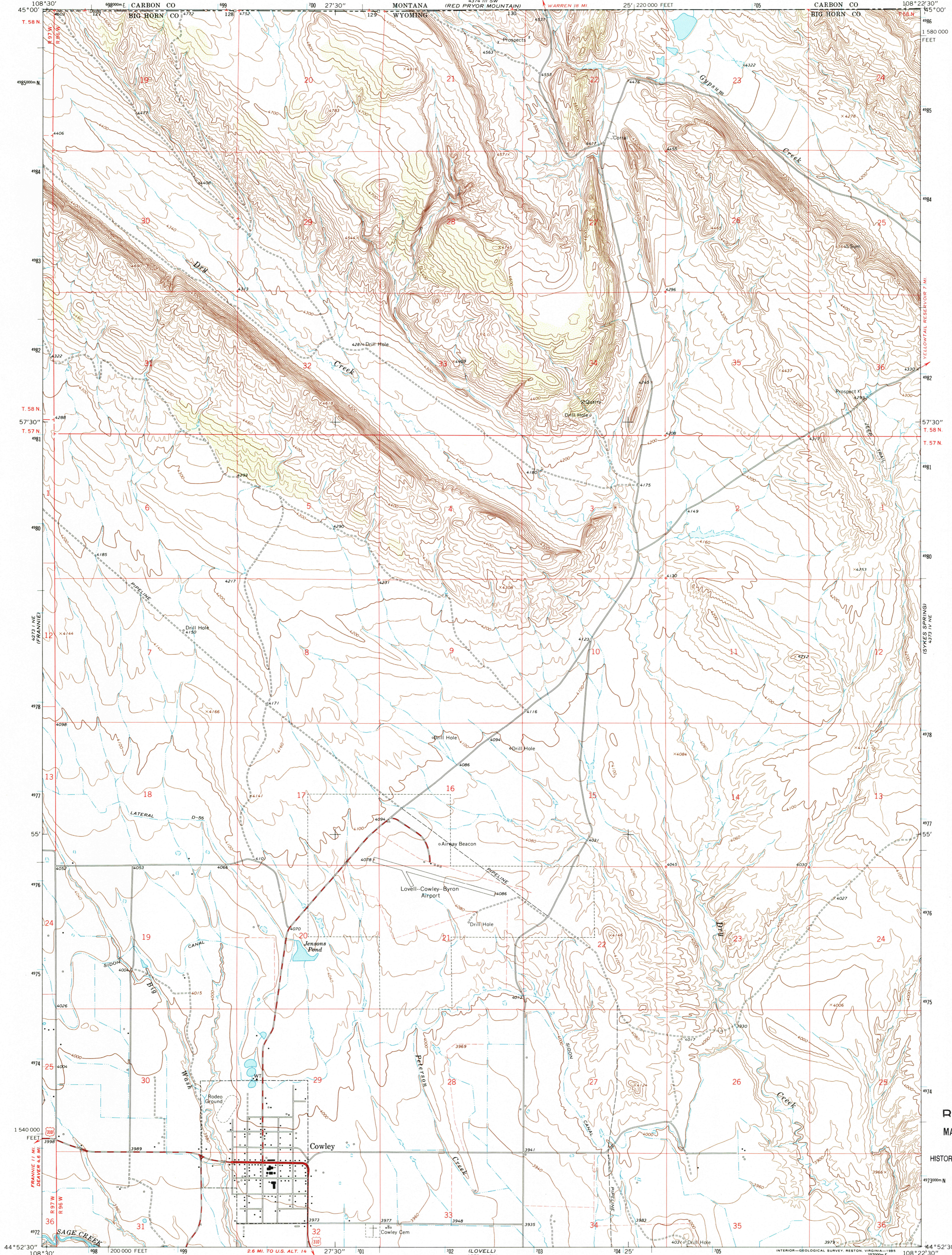
52° 54' SE
DEAN CANYON



U.S. DEPARTMENT OF THE INTERIOR
U.S. GEOLOGICAL SURVEY

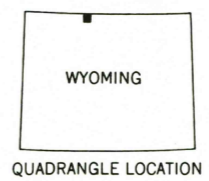
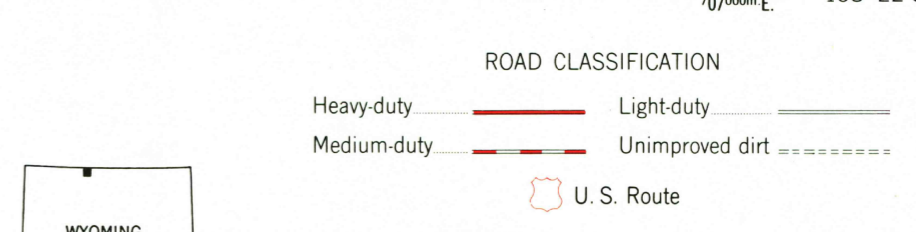
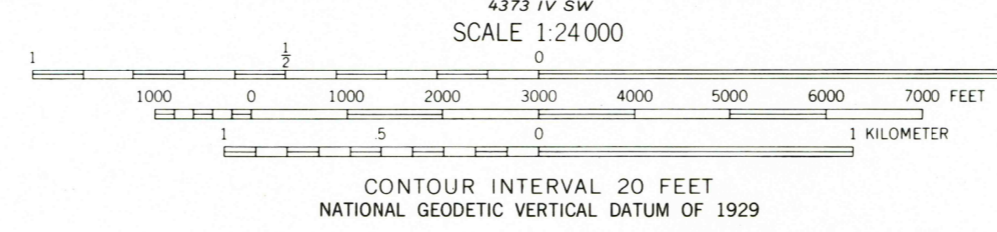
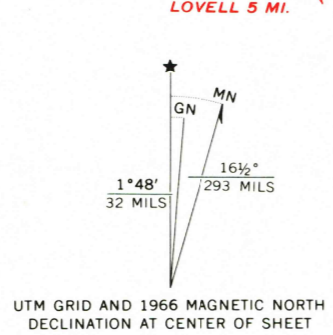
COWLEY QUADRANGLE
WYOMING—MONTANA
7.5 MINUTE SERIES (TOPOGRAPHIC)

42° 21' SE
IMPERY CANYON



RECEIVED
MAY 30 2002
USGS/NMU
HISTORICAL MAP ARCHIVES

Mapped, edited, and published by the Geological Survey
Control by USGS and USC&GS
Topography by photogrammetric methods from aerial
photographs taken 1965. Field checked 1966
Polyconic projection. 1927 North American Datum
10,000-foot grid based on Wyoming coordinate system,
east central zone
1000-meter Universal Transverse Mercator grid ticks,
zone 12, shown in blue
Fine red dashed lines indicate selected fence lines
To place on the predicted North American Datum 1983
move the projection lines 9 meters north and
53 meters east as shown by dashed corner ticks
Map photospected 1978
No major culture or drainage changes observed



THIS MAP COMPLIES WITH NATIONAL MAP ACCURACY STANDARDS
FOR SALE BY U.S. GEOLOGICAL SURVEY, P.O. BOX 25286, DENVER, COLORADO 80225
A FOLDER DESCRIBING TOPOGRAPHIC MAPS AND SYMBOLS IS AVAILABLE ON REQUEST

COWLEY, WYO.—MONT.
44108—H4—TF—024
1966
PHOTOINSPECTED 1978
DMA 4373 IV NW—SERIES V874

