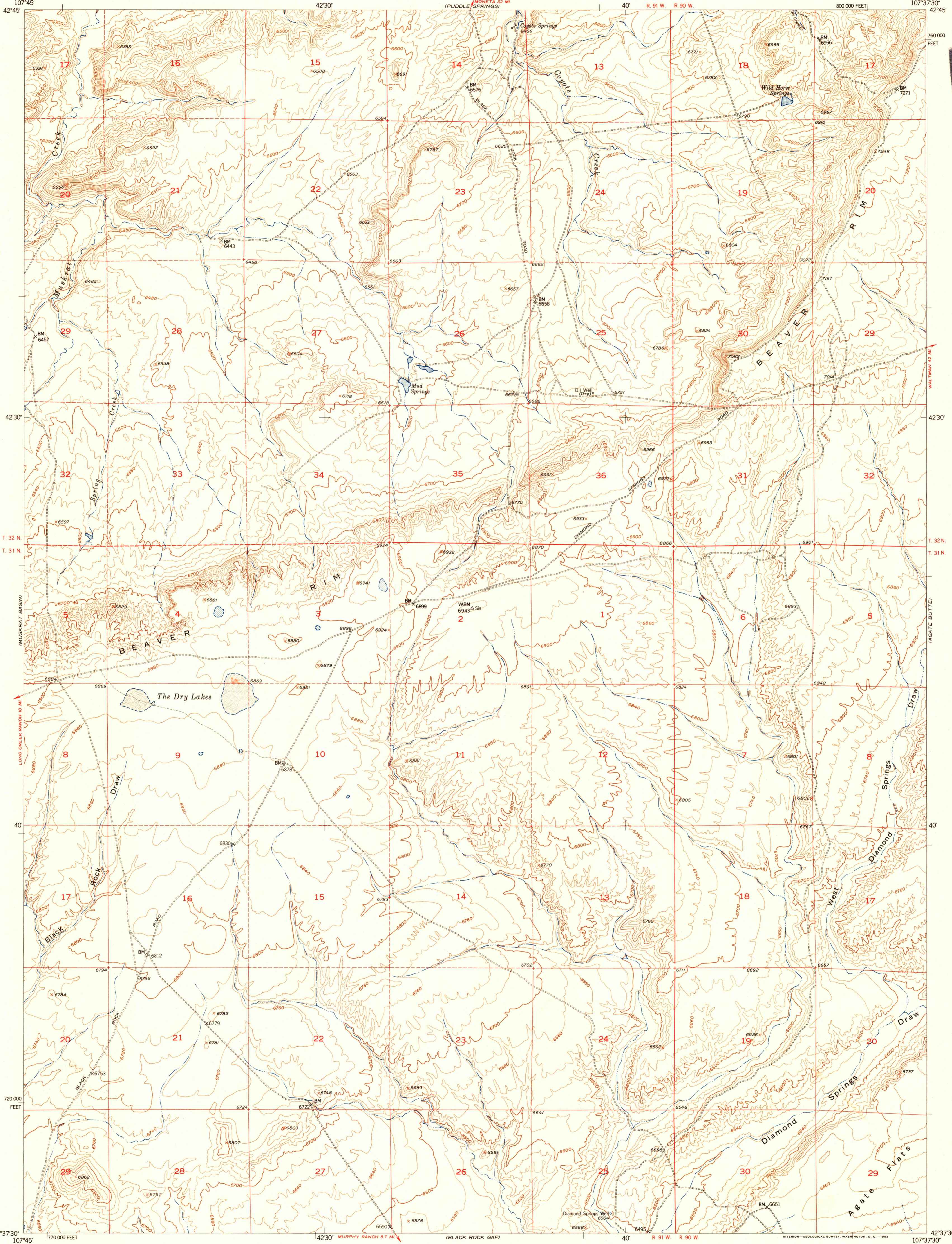


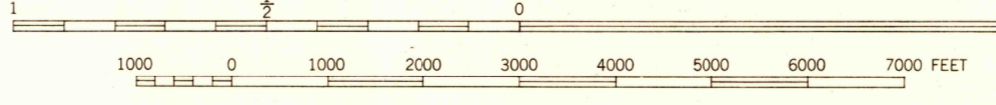
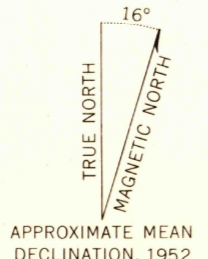
U.S.G.S.
FILE COPY
Map scale as shown



RETURN TO:
USGS AND HISTORICAL MAP ARCHIVES

U.S.G.S.
FILE COPY
Map scale as shown

Mapped, edited, and published by the Geological Survey as part of the Department of the Interior program for the development of the Missouri River Basin. Control by USGS and USC&GS. Topography from aerial photographs by multiplex methods and by plane-table surveys 1952. Aerial photographs taken 1949. Polyconic projection, 1927 North American datum. 10,000-foot grid based on Wyoming coordinate system, west central zone. Dashed land lines indicate approximate locations.



CONTOUR INTERVAL 20 FEET
DATUM IS MEAN SEA LEVEL

ROAD CLASSIFICATION

Heavy-duty	4 LANE 16 LANE	Light-duty
Medium-duty	4 LANE 8 LANE	Unimproved dirt
U. S. Route		State Route

THIS MAP COMPLIES WITH NATIONAL MAP ACCURACY STANDARDS
FOR SALE BY U. S. GEOLOGICAL SURVEY, FEDERAL CENTER, DENVER, COLORADO OR WASHINGTON 25, D. C.
A FOLDER DESCRIBING TOPOGRAPHIC MAPS AND SYMBOLS IS AVAILABLE ON REQUEST

COYOTE SPRINGS, WYO.
N4237.5-W10737.5/7.5
1952

DEC 28 1953