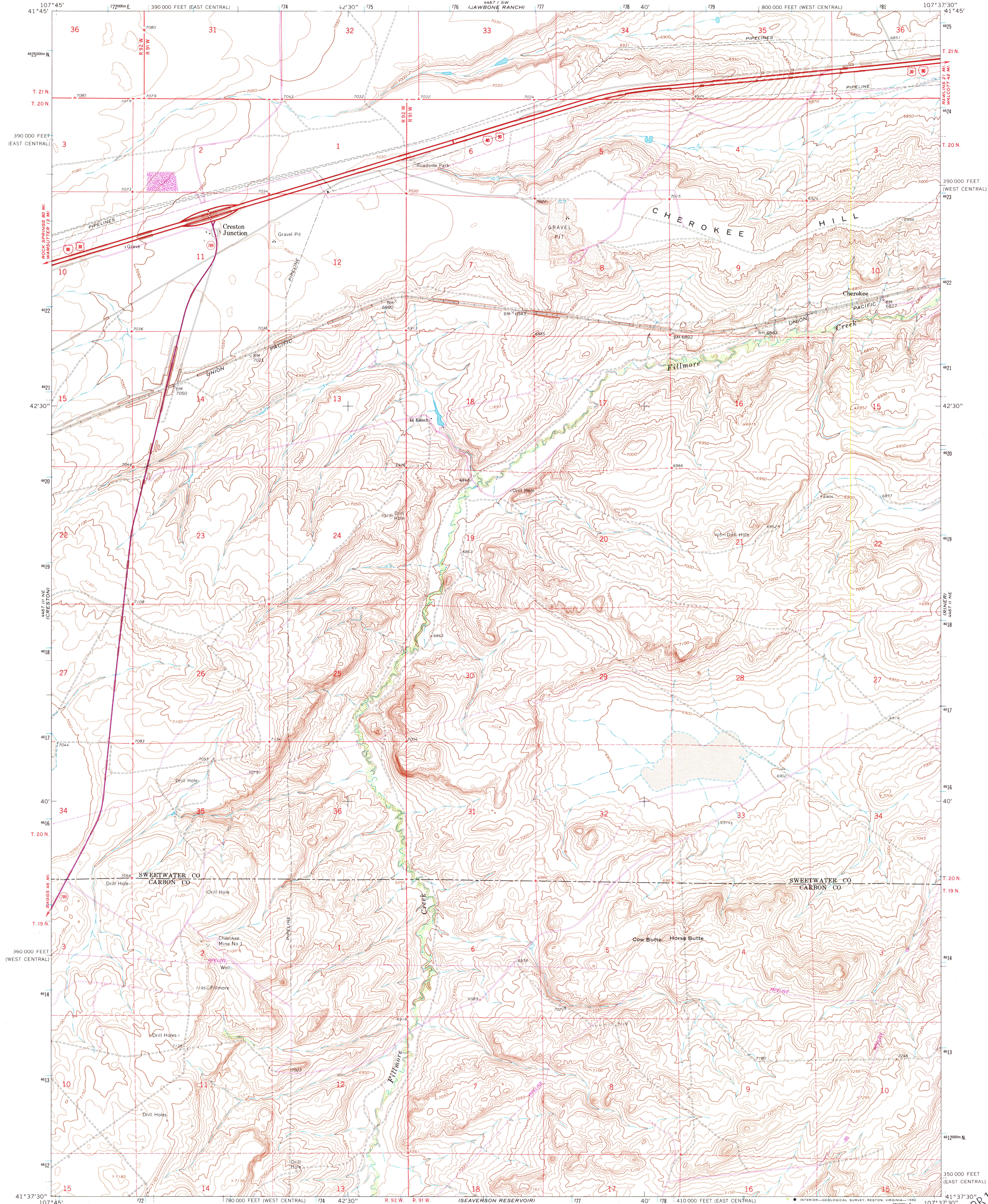
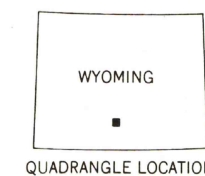
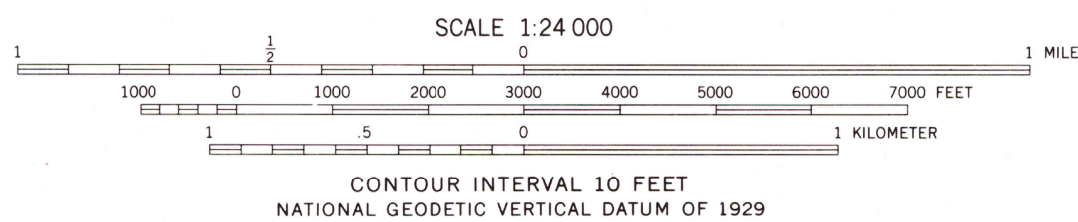
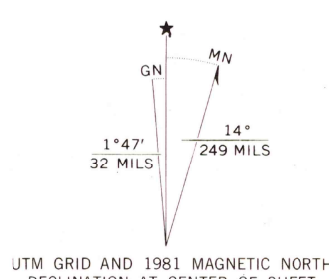


UNITED STATES
DEPARTMENT OF THE INTERIOR
GEOLOGICAL SURVEY

CRESTON JUNCTION QUADRANGLE
WYOMING
7.5 MINUTE SERIES (TOPOGRAPHIC)



Maped, edited, and published by the Geological Survey
Control by USGS and NOS/NOAA
Topography by photogrammetric methods from aerial
photographs taken 1965. Field checked 1966
Polyconic projection. 1927 North American datum
10,000-foot grids based on Wyoming coordinate system,
west central and east central zones
1000-meter Universal Transverse Mercator grid ticks,
zone 13, shown in blue
Fine red dashed lines indicate selected fence lines
To place on the predicted North American Datum 1983
move the projection lines 8 meters north and
53 meters east as shown by dashed corner ticks



ROAD CLASSIFICATION
Heavy-duty ——— Light-duty ———
Medium-duty ——— Unimproved dirt ———
Interstate Route U.S. Route State Route

CRESTON JUNCTION, WYO.
N4137.5—W10737.5/7.5

1966
PHOTOREVISED 1981
DMA 4467 II NW—SERIES V874

THIS MAP COMPLIES WITH NATIONAL MAP ACCURACY STANDARDS
FOR SALE BY U.S. GEOLOGICAL SURVEY, DENVER, COLORADO 80225, OR RESTON, VIRGINIA 22092
A FOLDER DESCRIBING TOPOGRAPHIC MAPS AND SYMBOLS IS AVAILABLE ON REQUEST

Revisions shown in purple compiled from aerial photographs
taken 1980 and other source data. This information not
field checked. Map edited 1981

RETURN TO:
USGS AND HISTORICAL MAP ARCHIVE

APR 15 1992
FILLMORE RANCH