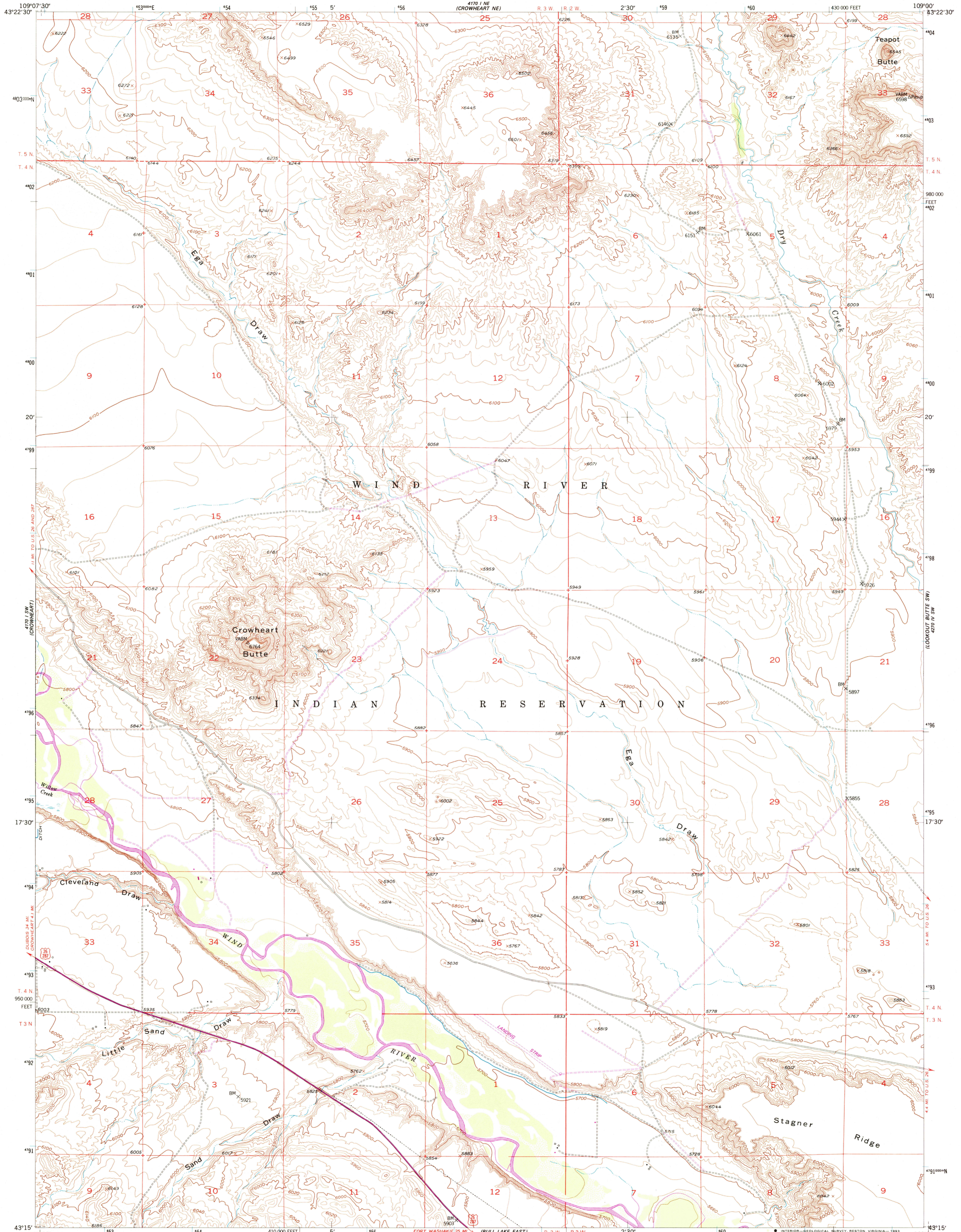
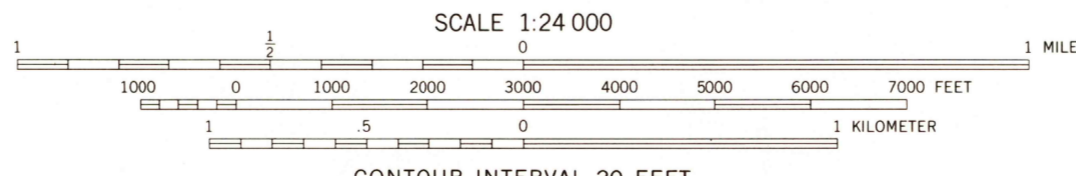
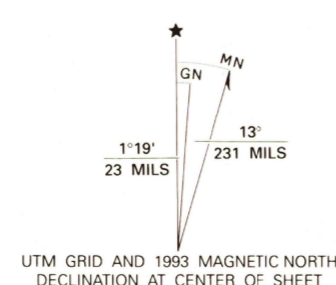


UNITED STATES
DEPARTMENT OF THE INTERIOR
GEOLOGICAL SURVEY

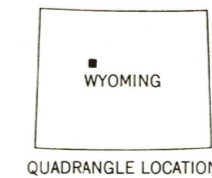
CROWHEART BUTTE QUADRANGLE
WYOMING-FREMONT CO.
7.5 MINUTE SERIES (TOPOGRAPHIC)



Produced by the United States Geological Survey as part of the Department of the Interior program for the development of the Missouri River Basin Control by USGS and NOS/NOAA
Compiled from aerial photographs taken 1948
Topography by plane-table surveys 1952
1927 North American Datum (NAD 27). Projection and 10000-foot ticks: Wyoming Coordinate System, west central zone (Transverse Mercator)
Blue 1000-meter Universal Transverse Mercator ticks, zone 12 North American Datum of 1983 (NAD 83) is shown by dashed corner ticks. The values of the shift between NAD 27 and NAD 83 for 7.5-minute intersections are given in USGS Bulletin 1875
There may be private inholdings within the boundaries of the National or State reservations shown on this map
Photospected from 1991 source; no major culture or drainage changes observed. Names verified 1993



THIS MAP COMPLIES WITH NATIONAL MAP ACCURACY STANDARDS FOR SALE BY U.S. GEOLOGICAL SURVEY DENVER, COLORADO 80225, OR RESTON, VIRGINIA 22092 A FOLDER DESCRIBING TOPOGRAPHIC MAPS AND SYMBOLS IS AVAILABLE ON REQUEST

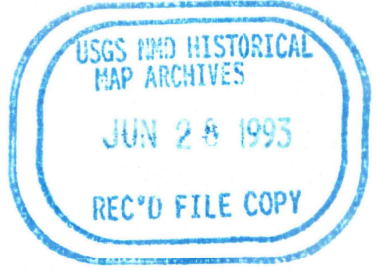


ROAD CLASSIFICATION

Primary highway, hard surface	Light duty road, hard or improved surface
Secondary highway, hard surface	Unimproved road
Interstate Route	U. S. Route
	State Route

CROWHEART BUTTE, WYO.
43109-C1-TF-024

1952
PHOTOREVISED 1978
MINOR REVISION 1993
DMA 4170 I SE-SERIES V874



Revisions shown in purple compiled from aerial photographs taken 1975. This information not field checked. Map edited 1978