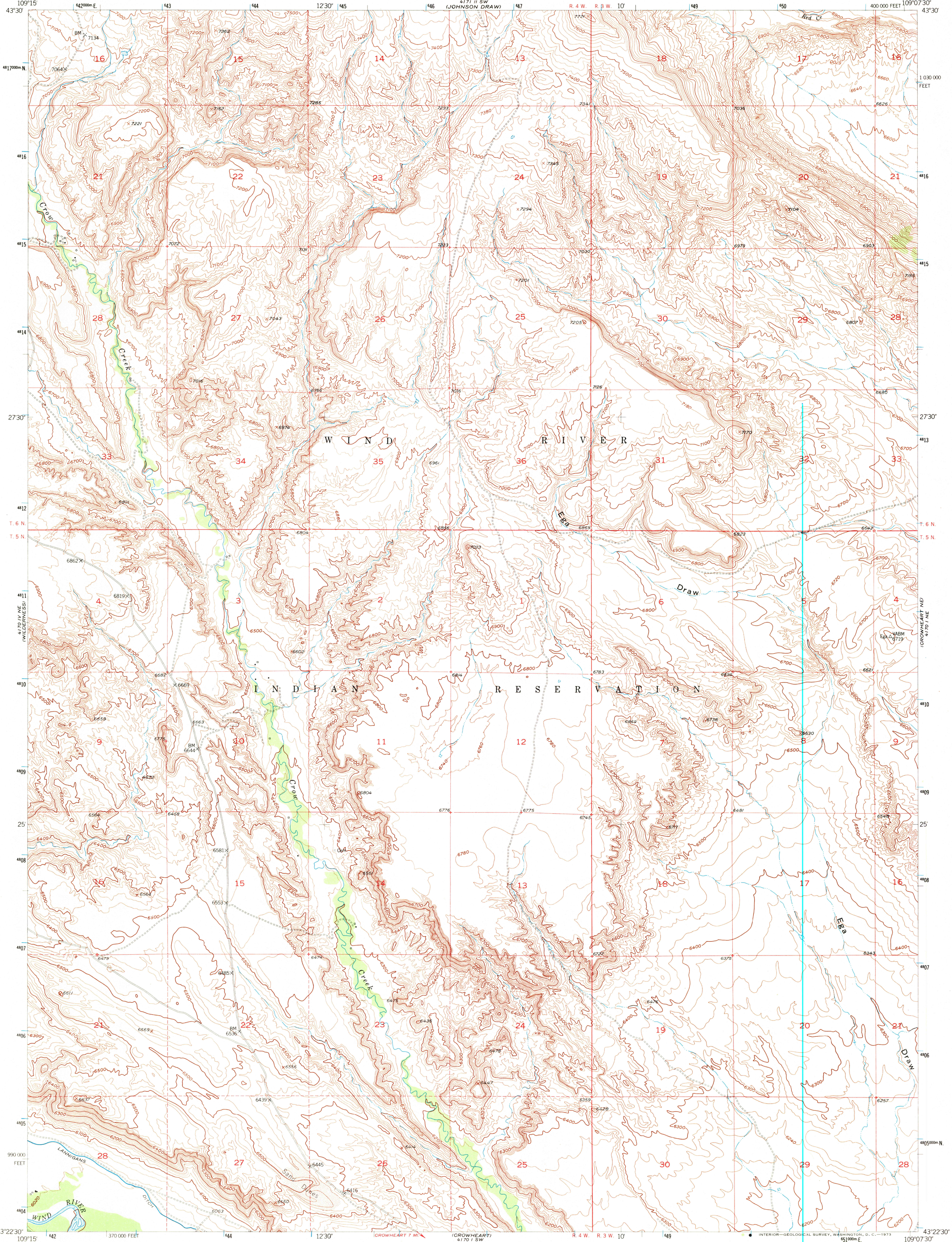
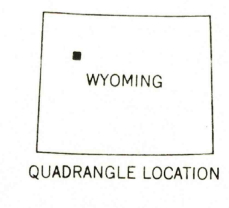
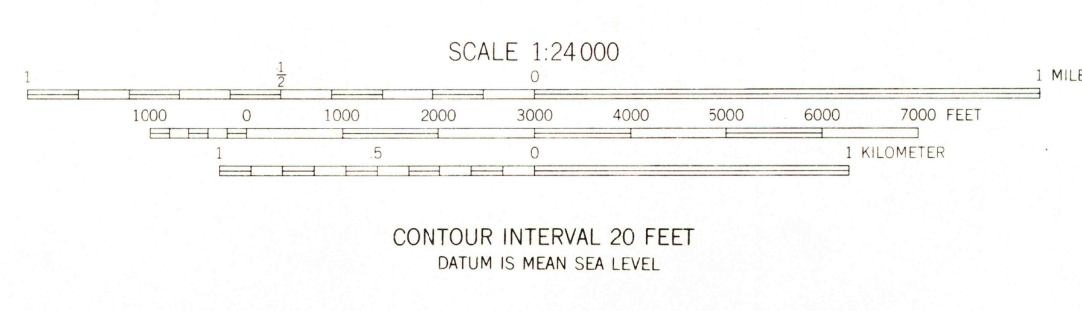
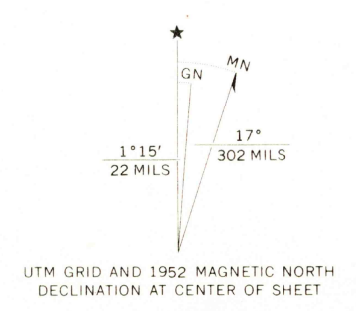


41711 SE  
(CIRCLE RIDGE)



Mapped, edited, and published by the Geological Survey as part of the Department of the Interior program for the development of the Missouri River Basin Control by USGS and USC&GS  
Topography from aerial photographs by multiplex methods  
Aerial photographs taken 1948-1949. Field check 1952  
Polyconic projection. 1927 North American datum  
10,000-foot grid based on Wyoming coordinate system, west central zone  
Dashed land lines indicate approximate locations  
1000-meter Universal Transverse Mercator grid ticks, zone 12, shown in blue



ROAD CLASSIFICATION  
Heavy-duty 4 LANE 6 LANE Light-duty  
Medium-duty 4 LANE 6 LANE Unimproved dirt  
U.S. Route State Route

AMS 4170 1 NW-SERIES V874  
SEP 4 1973  
CROWHEART NW, WYO.  
N4322.5-W10907.5/7.5  
1952  
AMS 4170 1 NW-SERIES V874

RETURN TO:  
USGS AND HISTORICAL MAP ARCHIVES

1480