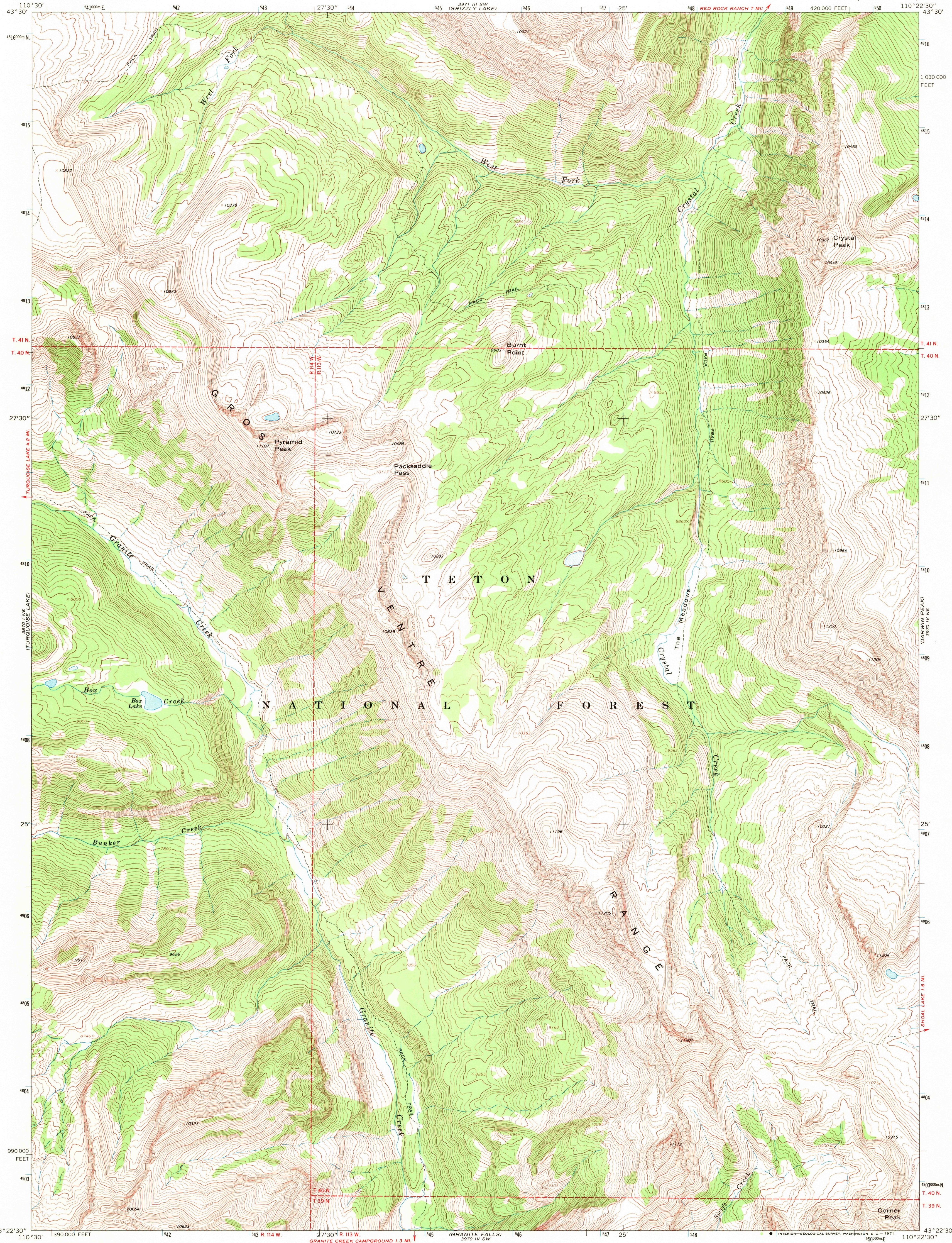
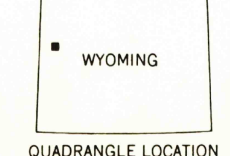
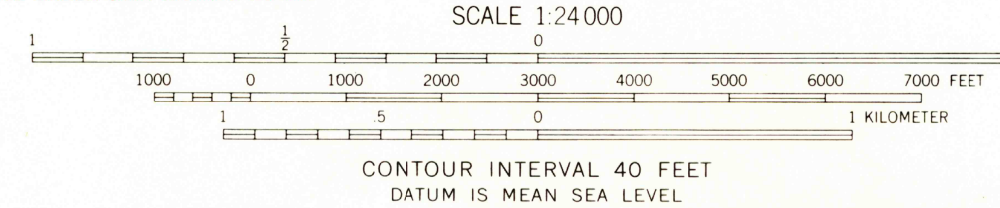
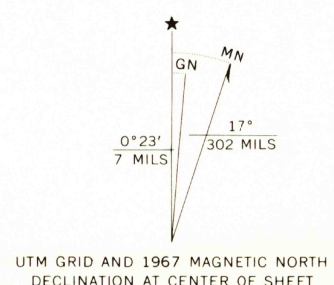


3971 IV SE
UPPER SLIDE LAKE



Mapped, edited, and published by the Geological Survey
Control by USGS and USC&GS
Topography by photogrammetric methods from aerial
photographs taken 1966. Field checked 1967
Polyconic projection. 1927 North American datum
10,000-foot grid based on Wyoming coordinate system,
west zone
1000 meter Universal Transverse Mercator grid ticks,
zone 12, shown in blue
Where omitted, land lines have not been established



ROAD CLASSIFICATION
Trails

THIS MAP COMPLIES WITH NATIONAL MAP ACCURACY STANDARDS
FOR SALE BY U.S. GEOLOGICAL SURVEY, DENVER, COLORADO 80225, OR WASHINGTON, D. C. 20242
A FOLDER DESCRIBING TOPOGRAPHIC MAPS AND SYMBOLS IS AVAILABLE ON REQUEST

CRYSTAL PEAK, WYO.
N4322.5-W11022.5/7.5

1967

AMS 3970 IV NW-SERIES V874

U.S.G.S.
FILE COPY
TOPOGRAPHIC DIVISION
MAR 3 1971

RETURN TO:
USGS MAP HISTORICAL MAP ARCHIVES